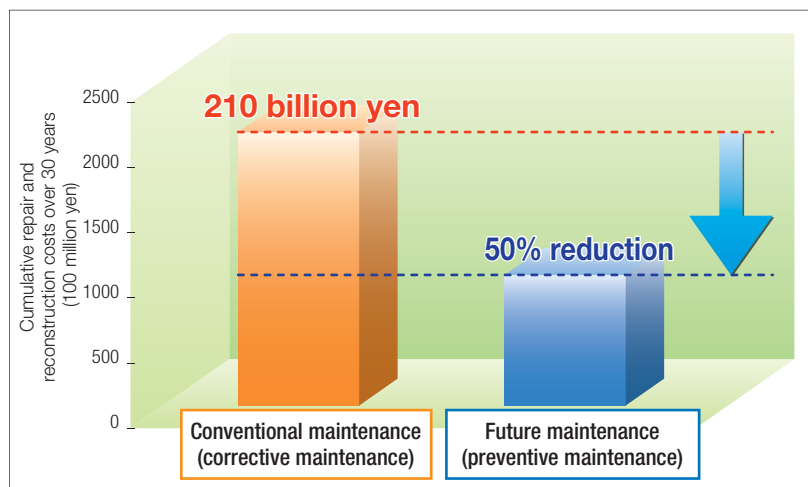
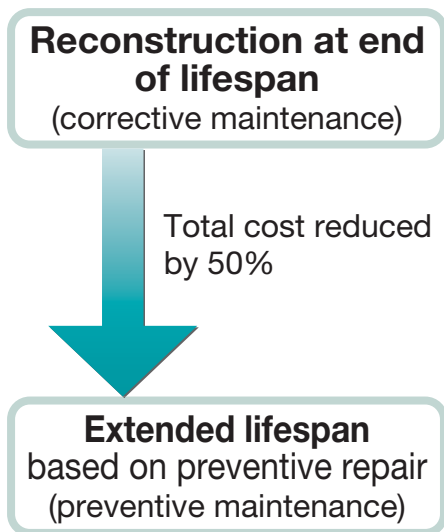


Cost Reductions Achieved by Extending Lifespan with Preventive Maintenance

As a result of simulations of systematic preventive maintenance, and in accordance with the basic policy of the Osaka City Bridge Conservation and Renewal Plan, it is estimated that total reconstruction, maintenance, and repair costs over the next 30 years will be **50%** of the equivalent figure for conventional methods.

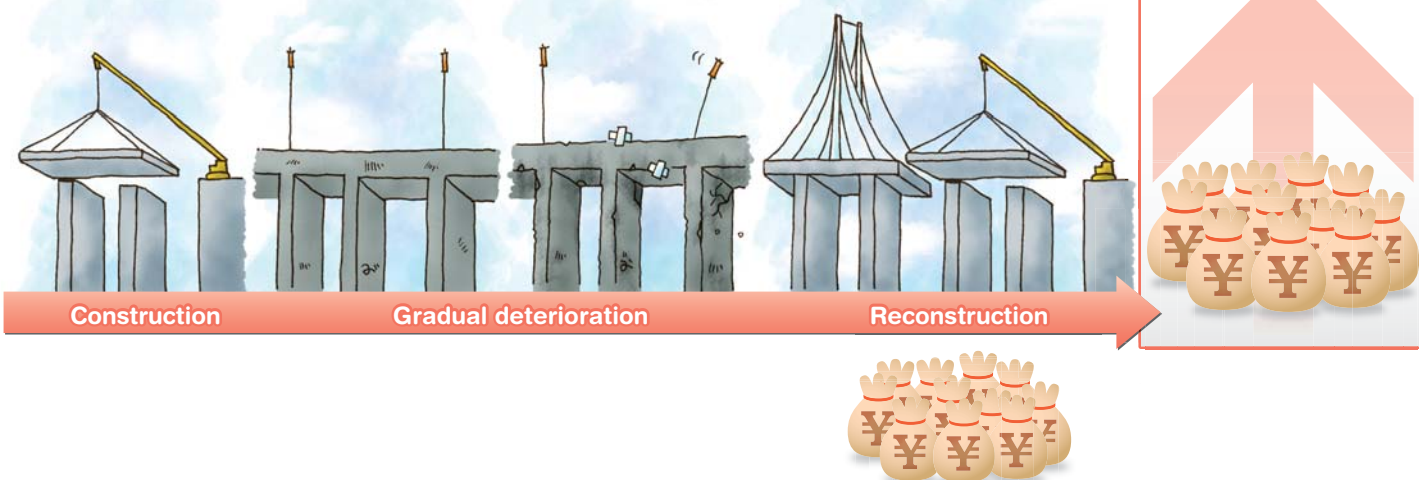


LCC Simulation for 30-Year Period

* The results of this simulation may vary according to future social conditions.

Conventional maintenance (corrective maintenance)

Repair and reconstruction after damage becomes significant



Future maintenance (preventive maintenance)

Lifespan extended by periodic inspections, maintenance, and repair

