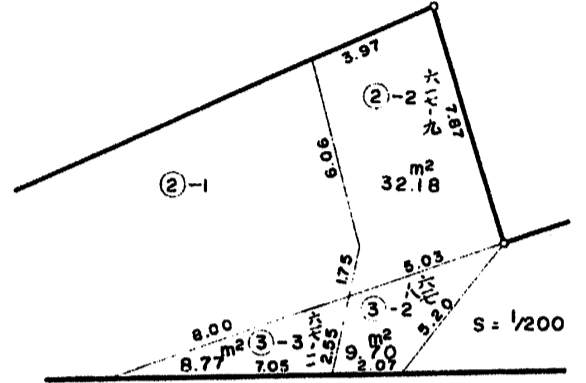
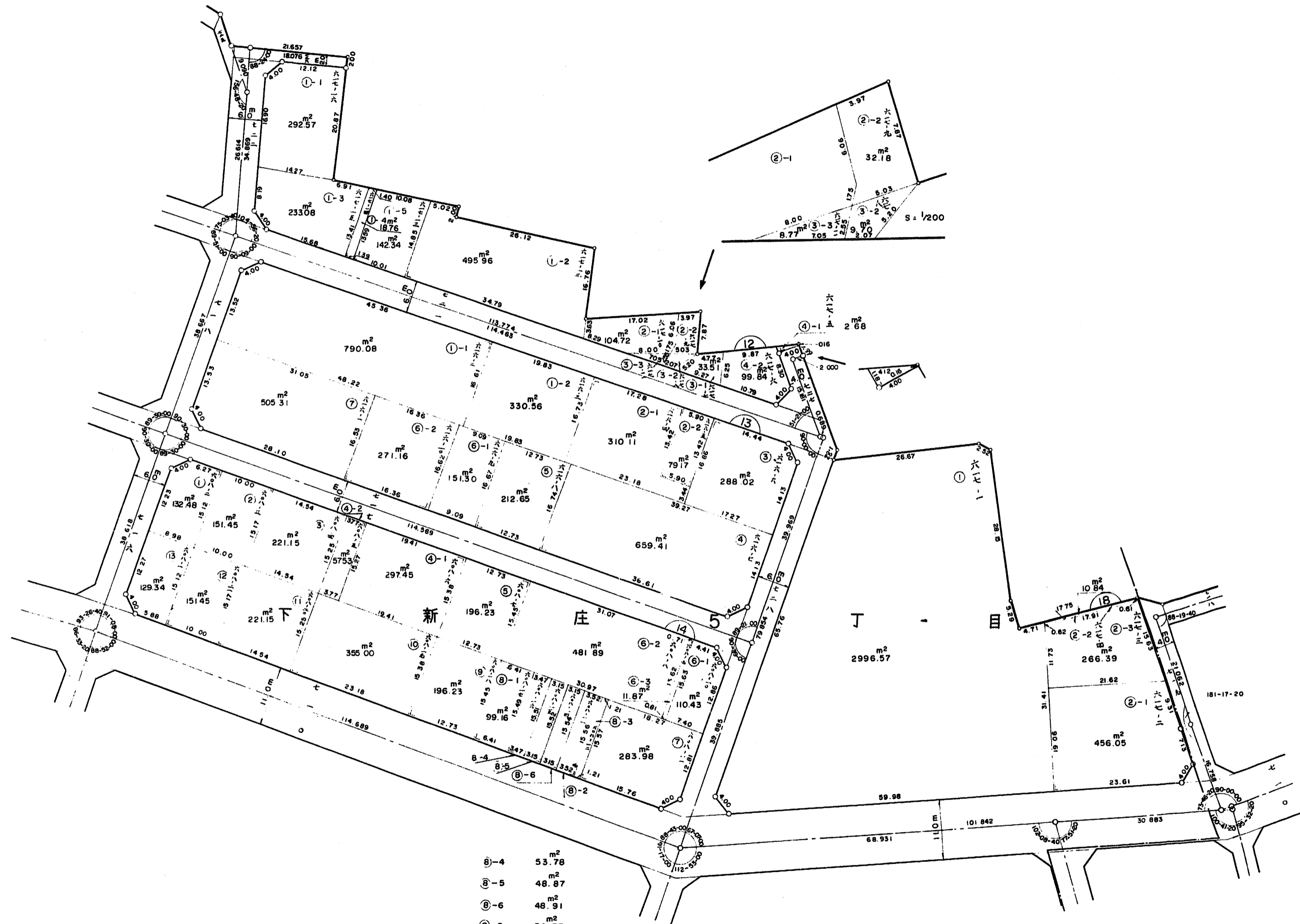
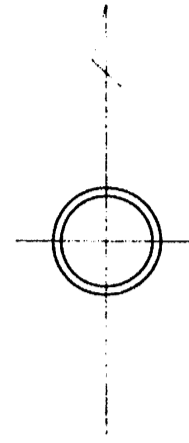


# 大阪都市計画下新庄土地区画整理事業 確定図



⑧-4	53.78	m <sup>2</sup>
⑧-5	48.87	m <sup>2</sup>
⑧-6	48.91	m <sup>2</sup>
⑧-2	54.73	m <sup>2</sup>
⑧-3	18.83	m <sup>2</sup>