

図1 感染性胃腸炎 (n=6)

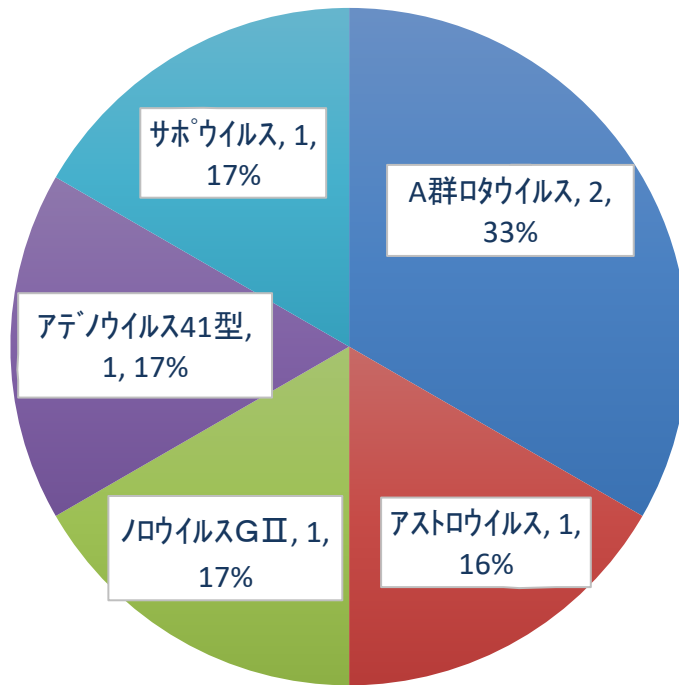


図2 インフルエンザ (n=69)

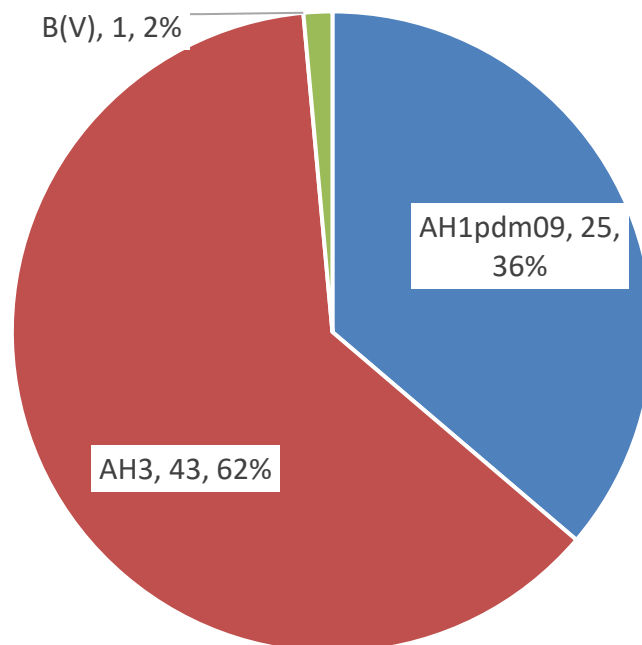


図3 インフルエンザ 月別ウイルス検出

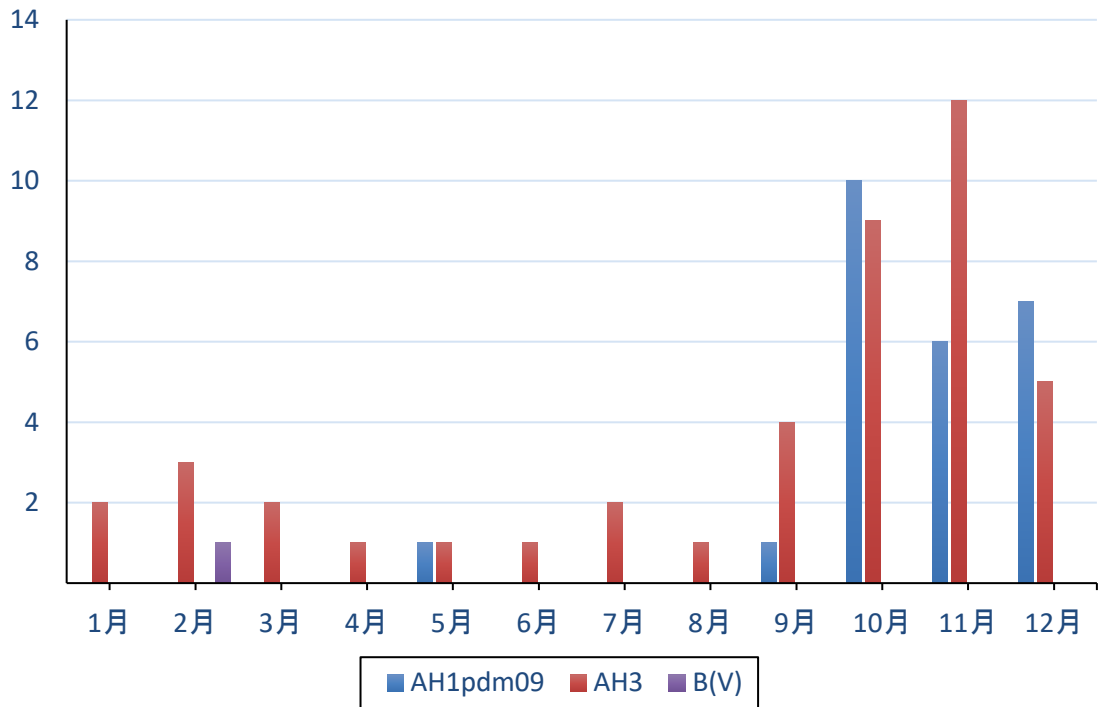


図4 RSウイルス感染症 (n=1)

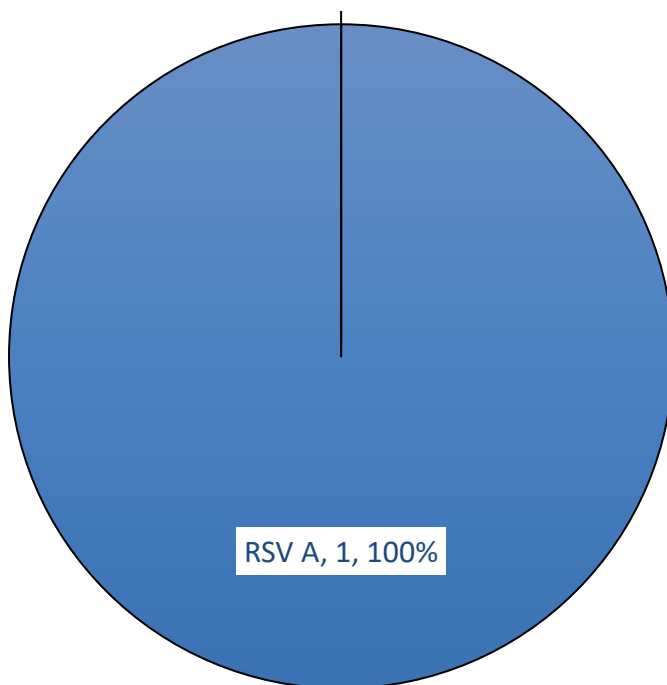


図5 手足口病 (n=2)

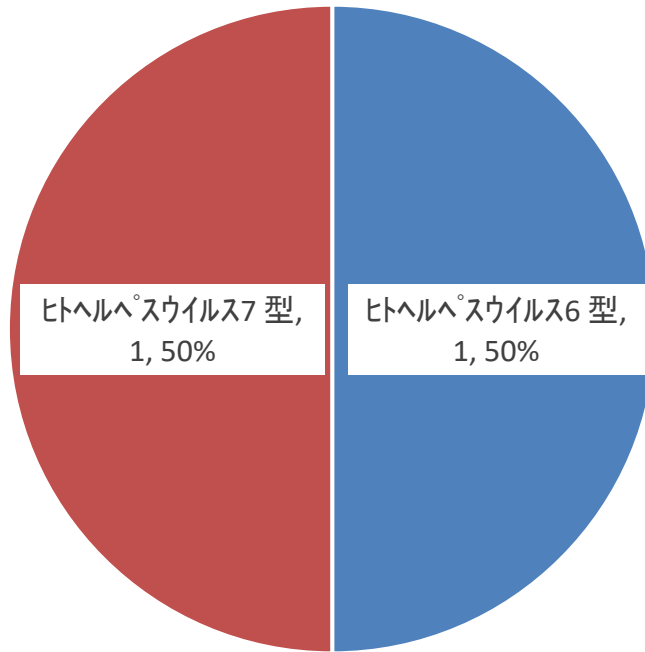


図6 無菌性髄膜炎 (n=5)

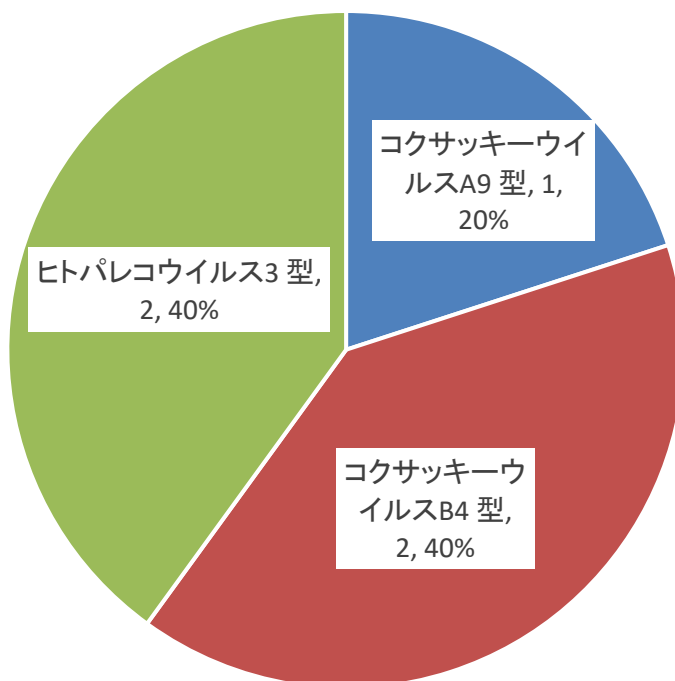


図7 流行性角結膜炎 (n=33)

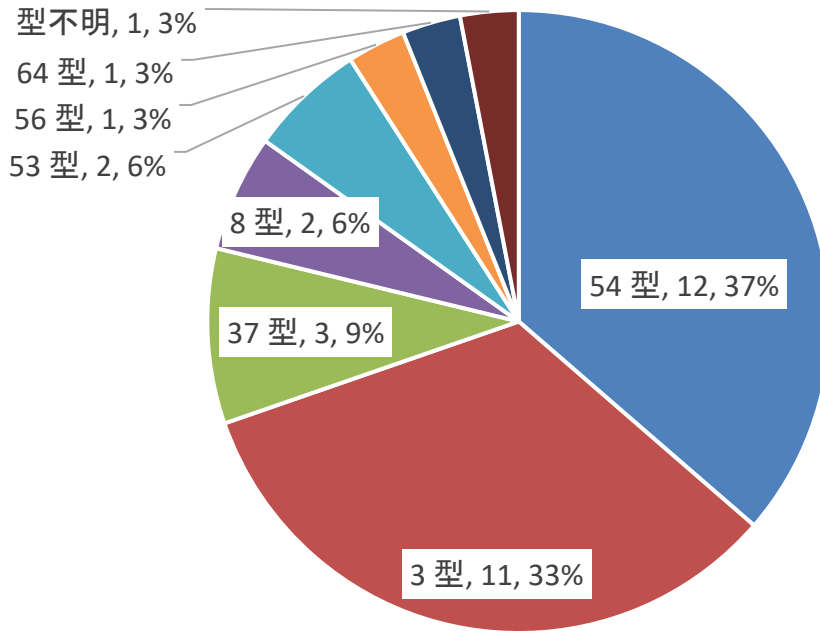


図8 流行性角結膜炎 月別ウイルス検出

