

N-3 National Museum of Art

The atrium-style interior of this new museum is almost entirely underground, and around the entrance there are items of artwork that depict the growth and development of modern art.



Sub

Way Sakatsuji Line
Jinbashi-suji Ave.



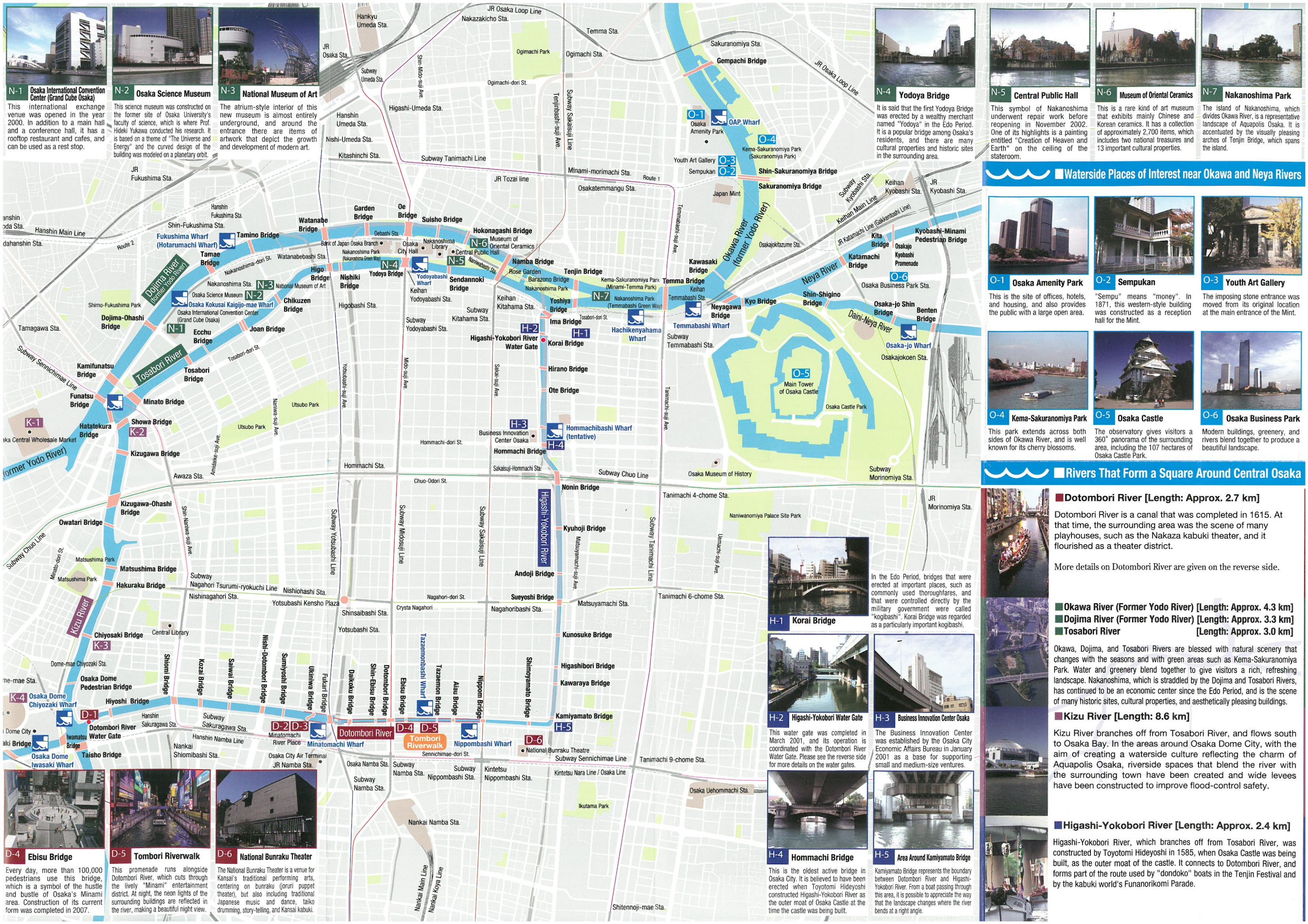
N-4 Yodoya Bridge

It is said that the first Yodo Bridge was erected by a wealthy merchant named "Yodoya" in the Edo period. It is a popular bridge among local residents, and there are many cultural properties and historical sites around it.



oriental Ceramics N-7 Nakanosh

The island of Nakar divides Okawa River, is a landscape of Aquaporin accentuated by the white arches of Tenjin Bridge the island.



O-3 Youth Art Gallery

The imposing stone entrance was moved from its original location at the main entrance of the Mint.

0-6 **Osaka Business Park**

Modern buildings, greenery, and rivers blend together to produce a beautiful landscape.

■ **Dotombori River** [Length: Approx. 2.7 km]

Datamohari River is a canal that was completed in 1960.

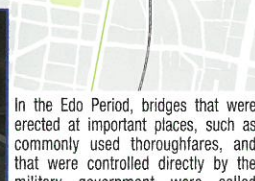
More details on Dotombori River are given on the reverse side.

■ Doiima River (Former Yodo River) [Length: Approx. 3.3 km]

■ Kizu River [Length: 8.6 km]

■ Higashi-Yokobori River [Length: Approx. 2.4 km]

Higashi-Yokobori River, which branches off from Tosabori River, was constructed by Toyotomi Hideyoshi in 1585, when Osaka Castle was being built, as the outer moat of the castle. It connects to Dotombori River, and forms part of the route used by "dondoko" boats in the Tenjin Festival and by the kabuki world's Funanorikomi Parade.



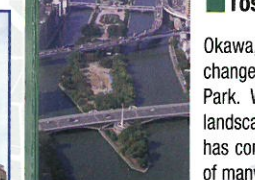
"kogibashi". Korai Bridge was regarded

In the Edo Period, bridges that were erected at important places, such as commonly used thoroughfares, and that were controlled directly by the military government were called "kogibashi". Korai Bridge was regarded as a particularly important kogibashi.



113 Business Innovation Center Osaka

This water gate was completed in March 2001, and its operation is coordinated with the Dotombori River Water Gate. Please see the reverse side for more details on the water gates.



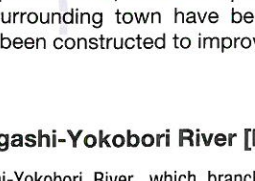
Kilgus

The Business Innovation Center was established by the Osaka City Economic Affairs Bureau in January 2001 as a base for supporting small and medium-size ventures.



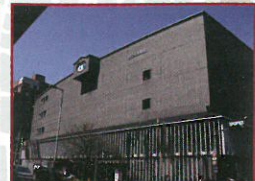
H-5

This is the oldest active bridge in Osaka City. It is believed to have been erected when Toyotomi Hideyoshi constructed Higashi-Yokobori River as the outer moat of Osaka Castle at the time the castle was being built.



ucted by Toyotomi Hideyoshi in 1

part of the route used by "dondoko"
kabuki world's Funanorikomi Park



D-6 National Dumbbells Theater

The National Bunraku Theater is a venue for Kansai's traditional performing arts, centering on bunraku (joruri puppet theater), but also including traditional Japanese music and dance, taiko drumming, story-telling, and Kansai kabuki.