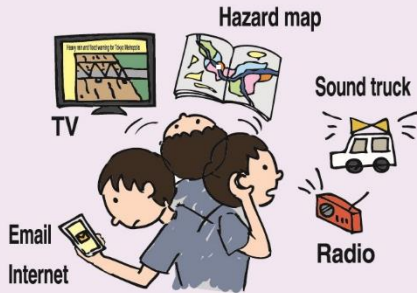


Evacuation Precautions

When a record typhoon is approaching

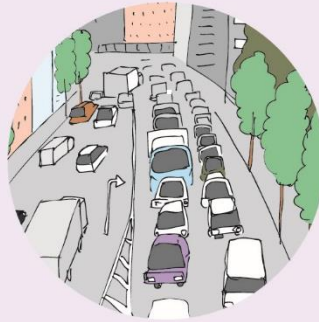
Collect information proactively

A variety of information is released in times of disaster. Make proactive efforts to collect information and give yourself the opportunity to evacuate.



As a rule, evacuate on foot

If you need to evacuate by car, begin evacuating earlier, e.g., the elderly and others requiring assistance.



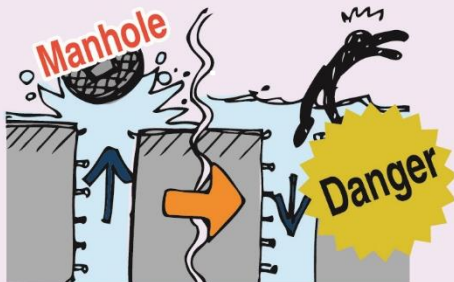
Do not use low elevation roads

Avoid traveling on roads that are at lower elevation than their surroundings and are prone to flooding, e.g., an underpass.



Do not use flooded roads

The water will be muddy, and you will have a hard time seeing where you are going. It is dangerous as you can fall into a manhole, drain, or other openings.



Go to a place higher than flood level

Even if you are staying in the same building, evacuate to a place where you can safely protect yourself from flooding, e.g., an upper floor.



Be fully prepared if you are staying home

If your home is flooded or becomes isolated, you may not be able to use water, electricity, or gas. If you can stay home and are staying home, you need to have drinking water and food ready in advance.



Driving or evacuating in strong wind is dangerous

The strength of the wind affects evacuation. When strong wind gusts are blowing due to a typhoon, etc., a traveling truck may flip over, or block walls and houses may begin to collapse.

