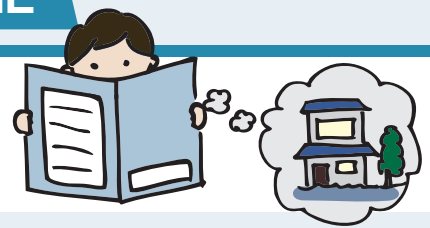


Check Point

1

Check what kind of disaster your area is prone to.



Check Point

2

Check when and where to evacuate for each disaster.

In case heavy rain is about to flood the river

(Refer to "Evacuation Flow Chart" on Page 11)

Evacuation to Protect Your Life

Priority

1

before inundation

Evacuate Early !!

1

Home, the home of relatives or acquaintances, work place and etc.
(safe place with no fear of inundation)

2

2

Nearest evacuation site
(safe place with no fear of inundation)

3

3

3

Nearest flood disaster (tsunami) evacuation building
(safe place with no fear of inundation)
High building or high land
(safe place with no fear of inundation)

Last Minute Evacuation

Check Point

3

Check your routine preparation to protect your life by using provided information and MY TIMELINE.



Check details on the official website of Osaka City.



Family Evacuation Plan When heavy rain could cause river flooding

Sample

1

Evacuation place

Determine where you will evacuate to and write it down.
Determine all ① to ③ evacuation places that you will evacuate to depending on the situation.

In principle

Place for early evacuation

■ Home, relative's home, friend's home, workplace, etc. (The nearest safe place that will not be flooded)

■ Closest evacuation shelter (The nearest safe place that will not be flooded)

Evacuation place ①

Grandparents' home in XX Ward

Evacuation place ②

XX Elementary School

If you did not escape in time...

Where you can protect yourself at that place and time

■ Closest flood (tsunami) evacuation building (The nearest safe place that will not be flooded)
■ Tall building or other elevated place (The nearest safe place that will not be flooded)

Evacuation place ③

High-rise condo next door

2

Plan what to do

until you start evacuating.

Things to do

Collect information

Check weather and evacuation information

Prepare for evacuation

- ☒ Check emergency kit and stockpile
- ☒ Buy necessary items
- ☐ Begin moving household items to 2F, etc.
- ☒ Inspect area around the house
- ☒ Put away items that may blow away
- ☐ Check window locks
- ☒ Charge mobile phone
- ☒ Check opening of evacuation shelter

Contact and call out

Call out to neighbors

☒ To evacuate ☒ To evacuate together

Name Old man next door

Contact (06) XXXX-XXXX

☐ To evacuate ☐ To evacuate together

Name

Contact

Communicate with family

(If you're not together)

☐ Contact the person who will assist your evacuation

(If you cannot evacuate by yourself)

Miscellaneous

☐

☐

3

Fill in when you will start evacuating and when you will do what.

Determine when you will take the actions you identified in 2.
Write down when you will evacuate.

Family Evacuation Plan

Fill in when

Fill in When will you evacuate? When will you do what?

Ex: Double check emergency grab-and-go bag (mom)

• Turn on TV and radio (children)

• Check emergency kit and stockpile (mom)

• Check evacuation route and evacuation shelter (everyone)

Ex: Double check evacuation shelter (everyone)

• Inspect area around the house (dad)

• Bring tricycle and flower pots into the house (mom)

• Check that mobile phones are charged (dad and mom)

Ex: Grandma and mom evacuate to a relative's house by car

• Communicate with family (everyone) Likely evacuation place at this stage

• Contact old man next door (mom) Evacuation place ①, ②

• Evacuate to grandparents' home in XX Ward by car (mom and children)

Ex: Evacuate to XX Elementary School (dad and children)

• Evacuate to XX Elementary School (dad) Likely evacuation place at this stage

Evacuation place ①, ②

Likely evacuation place at this stage

Evacuation place ③



* Depending on the situation of the disaster, information may not necessarily be released in this order. It is important to respond flexibly to the situation.

After evacuating

After evacuating, inform your family and other important people that you have evacuated safely

Contact method

Mobile phone, Disaster Emergency Message Dial, etc.

Family meeting place

Grandparents' home in XX Ward

It is extremely dangerous to leave or relocate from your evacuation place before the evacuation information is lifted.