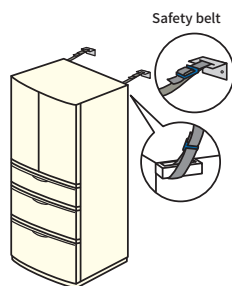


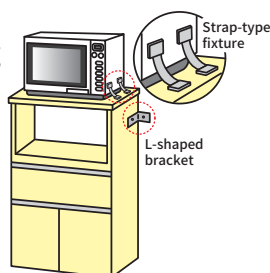
Refrigerators

You can find an opening for affixing a belt or handle at the top on the back of major manufacturers' refrigerators. Pass a safety belt through the opening and secure the other end to the wall's backing with suitable hardware to keep the appliance from overturning.



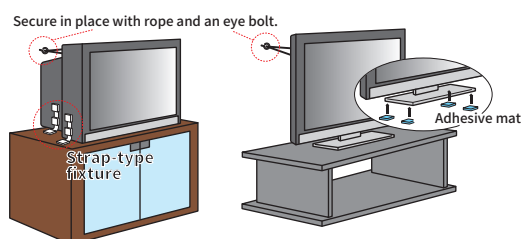
Microwave ovens and ovens

First, secure the stand on which the appliance is sitting to the wall or floor. Then use an adhesive mat, strap, or other suitable means to secure the appliance to the stand.



Televisions and computers

If the television's user manual includes instructions about how to keep it from overturning, follow them. Methods for securing a television to its stand include adhesive mats and strap-type fixtures. To secure a television to a wall, you can use a belt-type fixture or rope and eye bolt.



* Compiled based on the Tokyo Fire Department's "Handbook of Measures to Keep Furniture from Overturning and Falling."

Rearranging Furniture

Avoiding furniture altogether

Avoid using furniture if you can in rooms where family members and children spend a lot of time, for example in bedrooms and children's rooms, or use low-backed furniture.

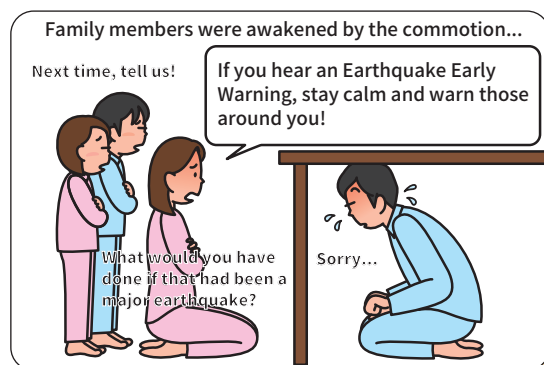
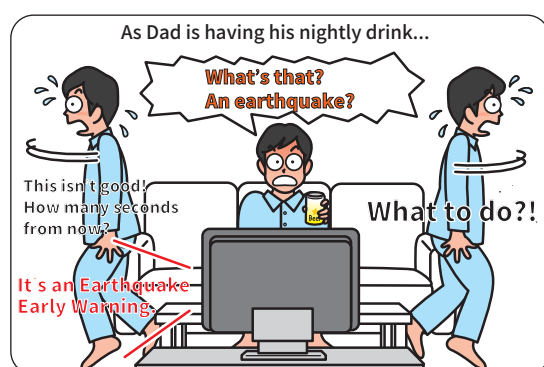
Rearranging furniture

Rearrange furniture so that if it were to fall over it wouldn't strike sleeping or seated people or block exits.

Are You Familiar with Earthquake Early Warning?

Earthquake Early Warning are used to quickly inform the general public of impending strong seismic activity. If you become aware of an Earthquake Early Warning, remain calm and take steps to ensure your safety while warning the people around you about the impending earthquake.

Disaster Risk Reduction Manga Earthquake Early Warning Edition



There's a website designed to help you communicate about what to do after you become aware of an Earthquake Early Warning.

Cabinet Office Disaster Simulator

<https://www.bousai.go.jp/simulator/index.html>