

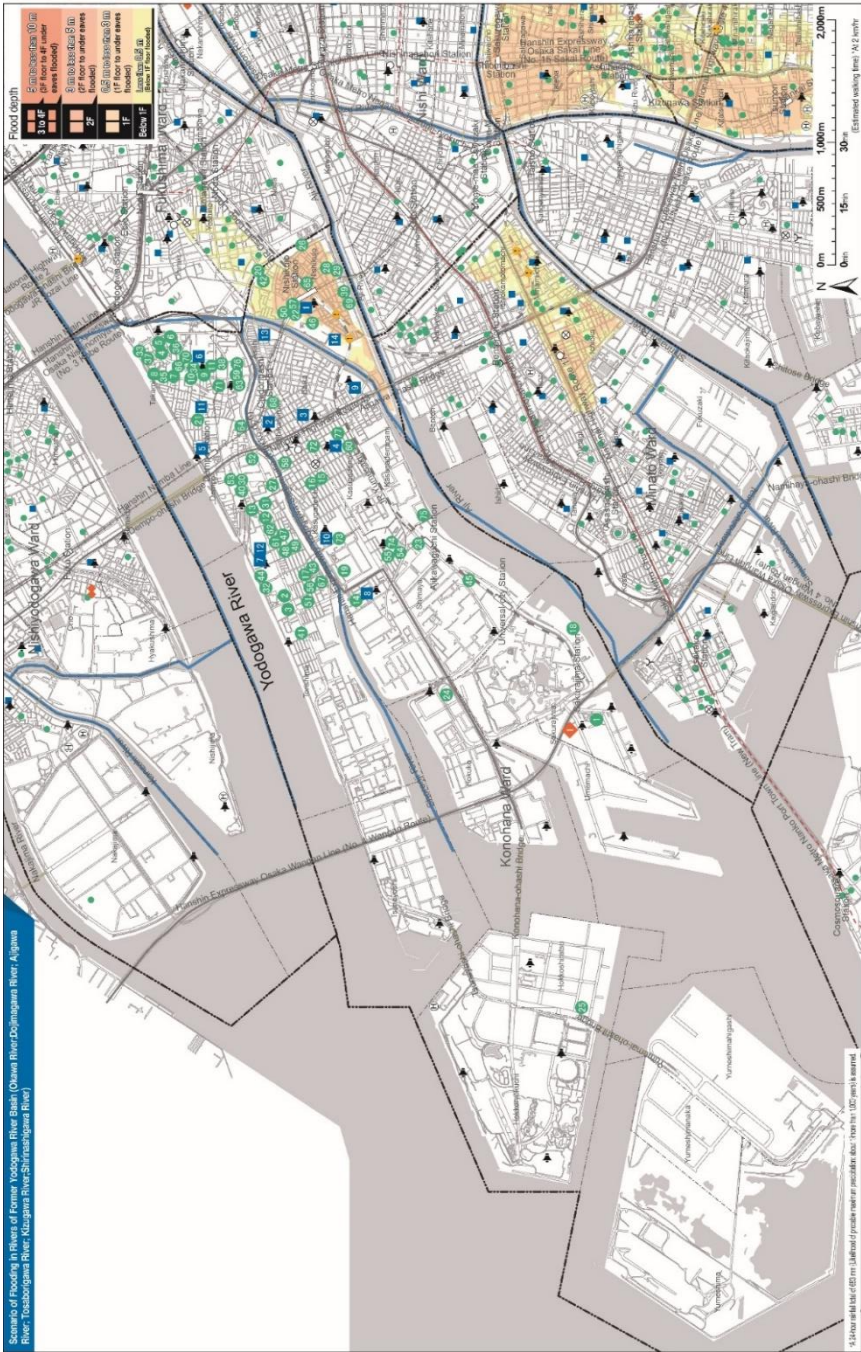
Additional Content for “Flood Disaster Prevention Map” (March 2021 Version)

【Konohana Ward】

The Osaka Prefectural Government announced the new flood risk zones on February 2022. The diagram below will be added on to the Flood Disaster Prevention Map (March 2021 Version).

Scenario conditions		Released	Contact Information	Telephone number
Announcement of Storm Surge Warning in Osaka City Area 24-hour total rainfall: 683 mm/hour Maximum rainfall: 138.1 mm/hour	Probable maximum precipitation (Likelihood: 1/more than 1,000 years)	Feb.2022	Nishi Osaka Flood Control Office, Osaka Prefecture	06-6541-7771

※In the situation when “Storm Surge Warning in Osaka City Area” is announced, (Kizugawa Sluice Gate, Ajigawa Sluice Gate, and Shirinashigawa Sluice Gate are closed) the projected occurrence of record-breaking rainfalls can induce possible dangers of flooding.



Designated disaster evacuation site

(Opens according to the disaster situation)

1	Central Cold Storage Ltd.	3-2-17 Sakurajima
---	---------------------------	-------------------

Designated disaster evacuation site & tsunami evacuation bldg.

(The former opens according to the disaster situation)

(The latter accepts evacuees if an evacuation information is issued*)

1	Nishikujo Elementary School	4-3-41 Nishikujo
2	Shikanjima Elementary School	2-16-29 Shikanjima
3	Baika Elementary School	3-17-29 Baika
4	Kasugade Elementary School	1-13-23 Kasugade-naka
5	Dempo Elementary School	3-13-10 Dempo
6	Takami Elementary School	1-3-35 Takami
7	Torishima Elementary School	2-5-12 Torishima
8	Shimaya Elementary School	2-9-36 Shimaya
9	Kasugade Junior High School	1-2-8 Kasugademinami
10	Baika Junior High School	3-12-24 Kasugadekita
11	Konohana Junior High School	2-14-31 Takami
12	Former Konohana Sogo High School (New Bldg.)	2-3-16 Torishima
13	Shoyo Junior and Senior High School	1-1-9 Asahi
14	Sakuya Konohana Junior and Senior High School	6-1-44 Nishikujo

Tsunami evacuation bldg.

(Accepts evacuees if an evacuation information is issued*)

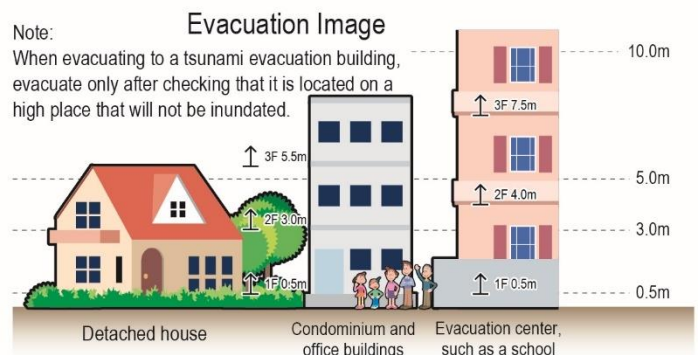
1	Municipal Sakurajima Housing 1 Gokan	3-6-30 Sakurajima
2	Municipal Torishima Housing 21 Gokan	4-1-21 Torishima
3	Municipal Torishima Housing 22 Gokan	4-2-22 Torishima
4	Municipal Takami Housing 24 Gokan	1-6-24 Takami
5	Municipal Takami Housing 25 Gokan	1-6-25 Takami
6	Municipal Takami Housing 26 Gokan	1-6-26 Takami
7	Municipal Takami Housing 41 Gokan	1-5-41 Takami
8	Municipal Takami Housing 44 Gokan	1-5-44 Takami
9	Municipal Takami Housing 51 Gokan	1-4-51 Takami
10	Municipal Takami Housing 52 Gokan	1-4-52 Takami
11	Municipal Takami Housing 57 Gokan	1-4-57 Takami
12	Municipal Torishima Higashi Housing 1 Gokan	1-3-1 Torishima
13	Municipal Torishima Higashi Housing 2 Gokan	2-1-2 Torishima
14	Municipal Shimaya Housing 1 Gokan	2-8-1 Shimaya
15	Municipal Kasugade Housing 1 Gokan	2-5-1 Kasugadekita
16	Municipal Kasugade Housing 2 Gokan	2-5-2 Kasugadekita
17	Municipal Torishima Daini Housing 1 Goto	3-12-3 Torishima
18	Sakurajima Kita Park	1 Sakurajima
19	Osaka Office, Osaka Works, Sumitomo Electric Industries, Ltd.	1-1-3 Shimaya
20	Care House Osaka Anryu	3-4-61 Nishikujo
21	Konohana Ward Home Care Services Center	3-2-27 Dempo
22	LIFE Nishikujo Store	6-1-132 Nishikujo
23	Nursing Home Garden Tenshi	4-1-11 Shimaya
24	AD: Daisen Co., Ltd. Kansai Mail Center	1-1-1 Hokuko
25	Osaka Port Maishima Food Distribution Center	1-11-52 Hokuko-shiratsu
26	Nakanippon Reizo Co., Ltd. Headquarters	1-1-20 Nishikujo
27	Konoike Construction Co., Ltd. Okijima Kowa House	6-1-49 Dempo
28	Hitachi Transport System Ltd. Daiichi Building	1-28-13 Nishikujo
29	Hitachi Transport System Ltd. Ajigawa Distribution Center	1-37-32 Nishikujo
30	Nippon Steel Nisshin Co., Ltd. Dempo House	5-1-18 Dempo
31	Dormi Shin Yodogawa 15 Gokan	1-2-15 Torishima
32	Torishima Riverside Hill Nagisamachi 15, 16, and 18 to 20 Goto	4-1-15, 16, 18 to 20 Torishima
33	Park City Fureainomachi	1-8-17 Takami
34	Takami Floral Town 4bangai 45 & 46 Goto	1-4-54 to 56 Takami
35	Takami Floral Town 5bangai 45 & 46 Goto	1-5-45 to 46 Takami
36	Takami Floral Town 6bangai 21 to 23 Goto	1-6-21 to 23 Takami
37	Takami Floral Town 7bangai 13 to 16 Goto	1-7-13 to 16 Takami
38	Floral Town Chidoribashi	1-3-61 Dempo
39	Le Mont Nishikujo	2-1-32 Nishikujo
40	King Mansion Konohaha II	5-1-24 Dempo

Tsunami evacuation bldg.

(Accepts evacuees if an evacuation information is issued*)

41	Rene Park Plaza	6-3-4 Torishima
42	Famille Nishikujo	3-4-34 Nishikujo
43	Prefectural Housing Kasugade Danchi	3-14-24 Torishima
44	Kosha Heights Torishima	4-1-1 Torishima
45	River Garden Eco City Alice no Mori	6-2-110 Shimaya
46	Gender Equality Center Seibukan and Kodomo Bunka Center	6-1-20 Nishikujo
47	Municipal Hidenonishi Housing 3 Gokan	1-11 Torishima
48	Municipal Hidenonishi Housing 4 Gokan	1-16 Torishima
49	Municipal Hidenonishi Housing 5 Gokan	1-17 Torishima
50	Konohana Hall / Baikaden	5-4-24 Nishikujo
51	Sumitomo Electric Industries, Ltd. Osaka Works Koki House	3-23-5 Torishima
52	Hanshin Juken Grand Villa Konohana I	6-2-1 Dempo
53	Yodogawa Riverside Villa	5-4-12 Dempo
54	Simple Heart Hotel Osaka	3-10-31 Shimaya
55	Surpass Konohana Neo Style	3-8-16 Shimaya
56	Lepia Konohana	3-16-17 Torishima
57	Konohana Indoor Pool	5-4-21 Nishikujo
58	Nursing Home Kurene Osaka	1-22-3 Kasugadekita
59	Municipal Dempo Housing 1 Gokan	1-4 Dempo
60	Municipal Kasugade Naka Daini Housing 1 Gokan	1-5-1 Kasugadenaka
61	Municipal Hidenonishi Housing 2 Gokan	1-12 Torishima
62	Municipal Hidenonishi Housing 1 Gokan	1-5 Torishima
63	Municipal Chidoribashi Housing 1 Gokan	2-2-2 Dempo
64	Lions Mansion Konohana Chidoribashi	4-1-3 Dempo
65	Hanshin Nishikujo Station Bicycle Parking	1-22 Nishikujo
66	AEON Takami Store	1-5 Takami
67	City Heights Konohana	3-15-39 Torishima
68	High Mart Chidoribashi	1-7-6 Shikanjima
69	Park Homes Nishikujo River Front	2-9-18 Nishikujo
70	Takami Floral Town Central Square 31	1-3-31 Takami
71	Lions Mansion Konohanadai 2	2-4-23 Dempo
72	Medical Co. Hakuhoikai Osaka Proton Therapy Clinic	1-27-9 Kasugadenaka
73	Sumitomo Electric Industries, Ltd. Osaka Works Employees Club	3-4-36 Kasugadekita
74	Maruhan Konohana Shimaya Store	3-8-14 Shimaya
75	Kings Yumesaki City Hikarinomachi	3-3 Kasugademinami
76	Municipal Dempo Housing 2 Gokan	1-4 Dempo
77	Kasugade Park Homes II	1-8-23 Kasugadenaka

Legend	◆ Designated disaster evacuation site	— JR
● Tsunami evacuation bldg.	■ Designated disaster evacuation site & tsunami evacuation bldg.	— Private railway
⊙ City Hall	⊗ Ward Office/Ward Health and Welfare Center	- - - Subway
⊗ Police station	⊕ Fire station	▨ Underground shopping
⊕ Disaster relief heliport	⬮ Outdoor emergency speaker	□ Train station
⚠ Underpass		— National route
		- - - Ward border
		- - - Town border



*As of March 2021. (Please see the website for an updated list of designated hazard areas.)

*For the evacuation time limit, please see the "List of Registered Tsunami Evacuation Buildings" on Osaka City's website, the Osaka City Map Information Site, or your local noticeboard.