

Flood Hazard Map for Taisho Ward

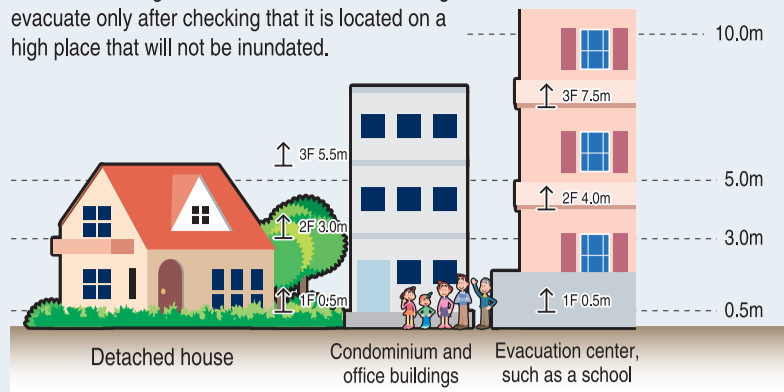
In Taisho Ward, inundation events due to a storm surge and inland flooding and tsunami inundation events due to a Tonankai earthquake, a Nankai earthquake, and a massive Nankai Trough earthquake are assumed to occur.

- Is the area where you live prone to inundation?
- Where is the nearest safe evacuation shelter?
- Are there any roads or underpasses that could be covered with water on the way to the evacuation shelter?

Using this map, check in advance where safe evacuation shelters (disaster shelters, etc.) are located and which evacuation route to take to ensure safe evacuation in the event of an emergency. In the event of a large-scale inundation, disaster shelters are expected to be crowded. If evacuation shelters are located far from your house, you should expect that it will take time for the elderly to evacuate. It is also important to secure more than one temporary shelter other than predesignated evacuation centers, such as securing condominium or other high buildings in the neighborhood by negotiating with owners in advance. Moreover, since it is dangerous to move out of your house during stormy weather, remaining in your house can be an alternative to evacuation as long as you have made appropriate disaster preparations at home.

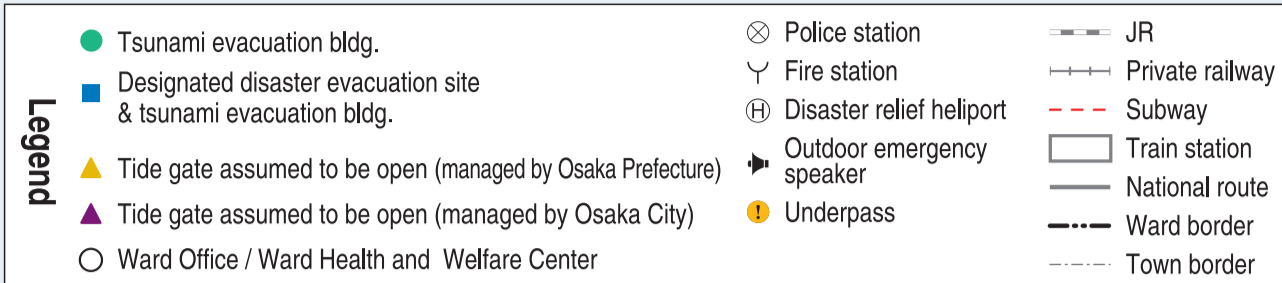
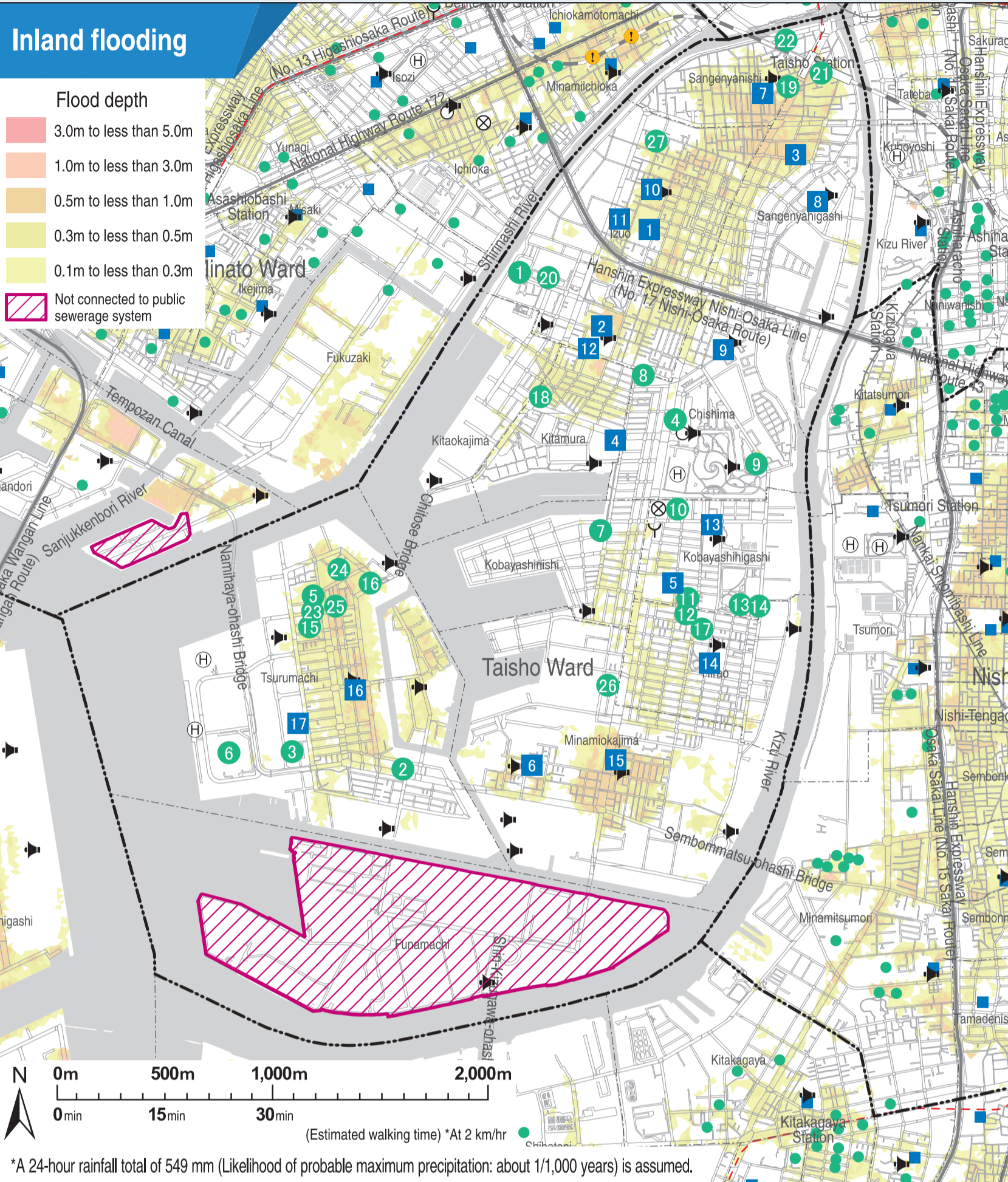
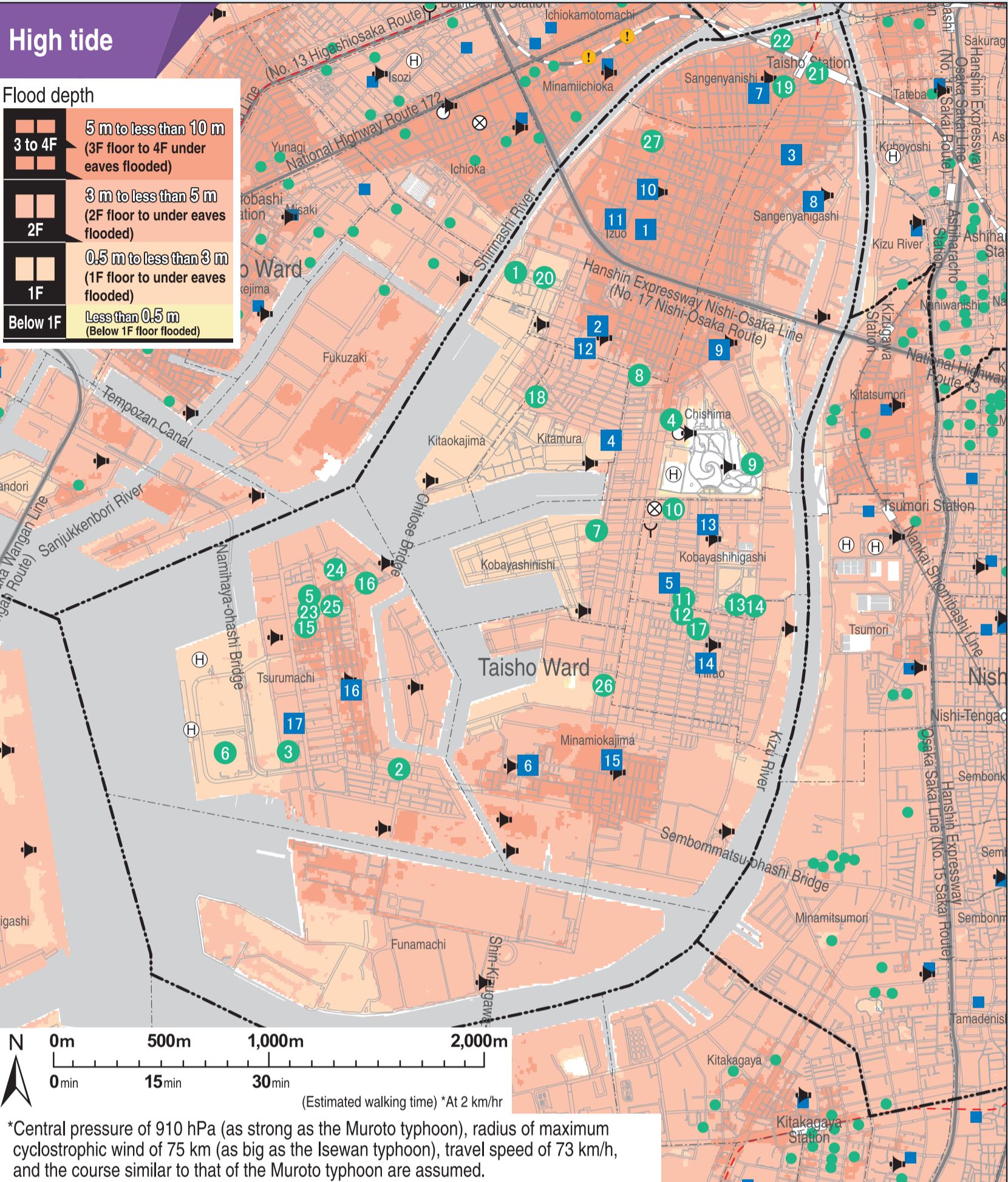
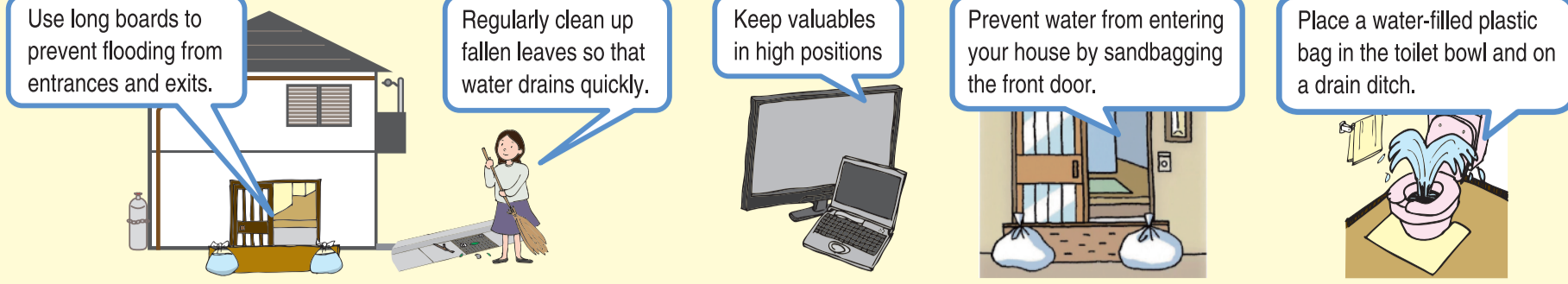
Note: When evacuating to a tsunami evacuation building, evacuate only after checking that it is located on a high place that will not be inundated.

Evacuation Image



Safety measures for your house

Reduce the likelihood of your house being inundated and your home contents damaged.



*This map shows hazard areas for flooding (river flooding, high tide, inland flooding, tsunami). It does not list designated safety areas and temporary safety areas. Please use this hazard map to find safe evacuation areas in the event of flooding.

*Flood-prone areas have underground shopping and facilities for the infirm. Please see the Regional Disaster Management Plan for more information. (The Regional Disaster Management Plan is available at your closest ward office, City Hall, and on Osaka City's website.)

Regular precautions and preparations

Have items ready that you can bring with you when you evacuate (emergency kit)

Items for emergency grab-and-go bag (backpack, etc.)

- ☐ Drinking water
 - Bare minimum, don't want it too heavy (about 2 to 3 500 ml PET bottles)
- ☐ Emergency food
 - Food that is easy to eat, doesn't expire quickly, can be eaten without cooking
- ☐ Valuables
 - Cash (10 yen coins for payphone), notebook, personal seal, copies of health insurance card and driver's license, etc.
- ☐ Medical supplies
 - Disinfectant, bandage, triangular bandage, etc.
- ☐ Other
 - Whistle
 - Thick gloves (work gloves)
 - Clothes (outerwear, underwear, socks)
 - Portable heat patches
 - Plastic bag and wrap
 - Toiletries, hygiene products, masks
 - Shoes with durable soles
 - Dry cell and mobile batteries
 - Portable toilet
 - Tissues and wet wipes
 - Flashlight and lantern
 - Radio
 - Helmet and protective hood
 - Rain and cold protection gear
- ☐ Towel and handkerchief
- ☐ Utility knife and can opener
- ☐ Disposable ware (chopsticks, paper plates)
- ☐ Sanitary napkins and toilet paper

Aim for 15 kg for adult male 10 kg for adult female

These are only rough standards. Limit what you bring with you to what you can carry by yourself.

Necessities for applicable families and households	Infants 	Baby food Powder and liquid milk Diapers Baby wipes, etc.
	Pregnant women 	Mother and child health handbook Absorbent cotton Gauze Items for newborns, etc.
	Elderly 	Denture Food for the elderly Adult diapers, etc.
	People with illnesses 	Contact info for attending physician Medicine for preexisting illnesses Medicine notebook, etc.
	Pets 	Leash Cage Toilet supplies Pet food, etc.
	Other 	Eyeglasses Contact lenses Hearing aid, etc.

Tsunami evacuation bldg.

(Accepts evacuees if an evacuation information is issued*)

1 Municipal Izu Daigo Housing 1 Gokan	7-12-1 Izu
2 Municipal Tsurumachi Daihachi Housing 1 Gokan	1-12-1 Tsurumachi
3 Municipal Tsurumachi Daiyuu Housing 1 Gokan	2-20-34 Tsurumachi
4 Taisho Ward Community Center	2-6-15 Chishima
5 Osaka City Bus Tsurumachi Depot	4-11-55 Tsurumachi
6 Ikea Tsuruhama	2-24-55 Tsurumachi
7 Taisho Ward Fureai Fukushima Center	1-14-3 Kobayashinishi
8 City Court Chishima 3-chome	3-1 Chishima
9 UR Chishima Danchi 5 Goto	2-4 Chishima
10 Taisho Sports Center Indoor Pool (Azalea Taisho)	3-3-25 Kobayashihigashi
11 Municipal Kobayashi Housing 1 Gokan	3-22 Kobayashihigashi
12 Municipal Kobayashi Housing 2 Gokan	4-1 Hirao
13 Geriatric Health Service Facility Ainosato	2-6-14 Kobayashihigashi
14 Nursing Home Yunosato	2-6-15 Kobayashihigashi
15 Municipal Tsurumachi Daisan Housing 1 Gokan	3-22-1 Tsurumachi
16 Municipal Tsurumachi Housing 1 Gokan	4-2-1 Tsurumachi
17 Municipal Kobayashi Housing 5 Gokan	2-23-5 Hirao
18 Municipal Kitamura Housing 1 Gokan	2-14-1 Kitamura
19 Hokuto Clinic Hospital	1-18-7 Sangenyaniishi
20 Former Taisho High School	7-11-20 Izu
21 Hotel Sobial Osaka Dome-mae	1-17-29 Sangenyaniishi
22 Taisho Yumenoki Nursery School	1-3-21 Sangenyaniishi
23 Municipal Tsurumachi Dayon Housing 1 Gokan	4-10-1 Tsurumachi
24 Municipal Tsurumachi Housing 2 Gokan	4-3-2 Tsurumachi
25 Tsurumachi Uminokaze Nursery School	4-8-4 Tsurumachi
26 Nursing Home Slow Life Okajima	5-4-5 Minamiokajima
27 Nursing Home Pleasant Maison Taisho Izu	1-18-1 Izu

Designated disaster evacuation site & tsunami evacuation bldg.

(The former opens according to the disaster situation)

(The latter accepts evacuees if an evacuation information is issued*)

1 Osaka Taisho Hakuryo High School	3-19-50 Izu
2 Izu Technical High School	5-16-7 Izu
3 Taisho Higashi Junior High School	44-30 Sangenyaniishi
4 Taisho Kita Junior High School	3-1-1 Kitamura
5 Taisho Chuo Junior High School	3-23-5 Kobayashihigashi
6 Taisho Nishi Junior High School	6-14-37 Minamiokajima
7 Sangenyaniishi Elementary School	1-20-26 Sangenyaniishi
8 Sangenyaniishi Elementary School	2-12-59 Sangenyaniishi
9 Izu Higashi Elementary School	1-16-16 Chishima
10 Izu Kita Elementary School	2-21-24 Izu
11 Naka Izu Elementary School	3-23-34 Izu
12 Kita Okajima Elementary School	5-17-31 Izu
13 Kobayashi Elementary School	2-4-45 Kobayashihigashi
14 Hirao Elementary School	2-21-28 Hirao
15 Minami Okajima Elementary School	3-6-11 Minamiokajima
16 Tsurumachi Elementary School	2-6-24 Tsurumachi
17 Buried Cultural Property Tsuruhama Repository (former Tsuruhama Elementary School)	2-20-26 Tsurumachi

*As of March 2021.

(Please see the website for an updated list of designated hazard areas.)

*For the evacuation time limit, please see the "List of Registered Tsunami Evacuation Buildings" on Osaka City's website, the Osaka City Map Information Site, or your local noticeboard.

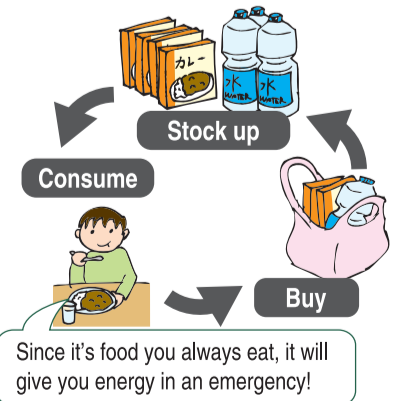
Have your stockpile ready

You may not be able to shop normally for several days after a natural disaster. Have peace of mind by adequately stocking basic necessities for yourself and your family on a day-to-day basis.

- ☐ Daily stocking
 - Stock up on food you often eat with long expiry dates; buy more when you consume them (rolling stock method)
- ☐ Food for at least 7 days
 - Recommended
 - Alpha rice that can be eaten by adding water, canned food, hardtack, instant and retort pouch food, dietary supplements, snacks, condiments, soup, etc.
- ☐ Drinking water for at least 7 days
 - 3 liters a day per adult
- ☐ Toilet supplies
 - Temporary toilet, waste storage containers, toilet bags, toilet paper
- ☐ Fuel
 - Portable gas stove, gas canisters, solid fuel
- ☐ Blanket, sleeping bag
- ☐ Plastic wrap for food
- ☐ Plastic tank

Rolling stock method

An economical method in which food is consumed before they expire.



Map information site, MapNavi Osaka

Hazard maps and disaster prevention facilities can be found online.

