

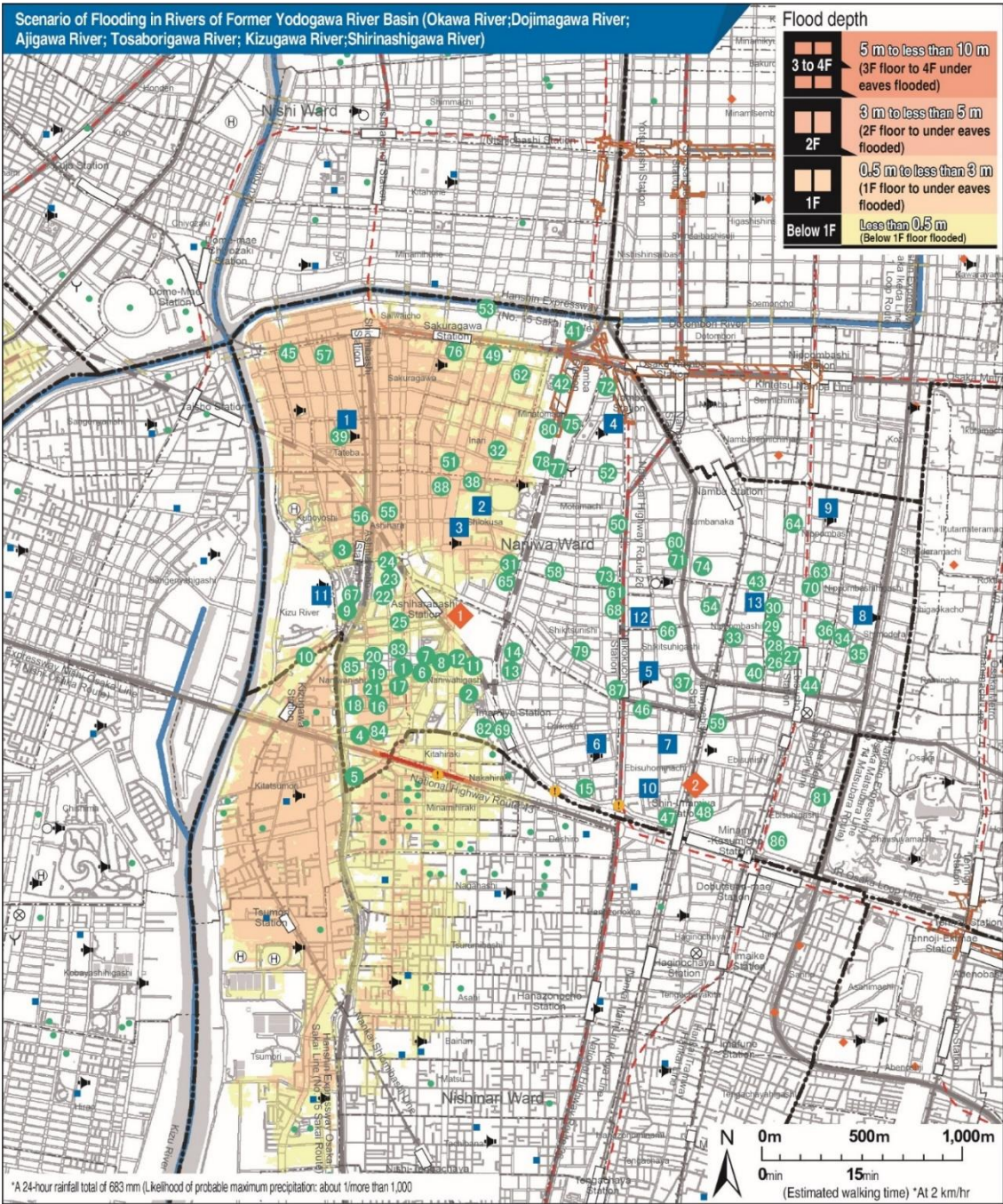
Additional Content for “Flood Disaster Prevention Map” (March 2021 Version)

【Naniwa Ward】

The Osaka Prefectural Government announced the new flood risk zones on February 2022. The diagram below will be added on to the Flood Disaster Prevention Map (March 2021 Version).

Scenario conditions		Released	Contact Information	Telephone number
Announcement of Storm Surge Warning in Osaka City Area 24-hour total rainfall: 683 mm/hour Maximum rainfall: 138.1 mm/hour	Probable maximum precipitation (Likelihood: 1/more than 1,000 years)	Feb.2022	Nishi Osaka Flood Control Office, Osaka Prefecture	06-6541-7771

※In the situation when “Storm Surge Warning in Osaka City Area” is announced, (Kizugawa Sluice Gate, Ajigawa Sluice Gate, and Shirinashigawa Sluice Gate are closed) the projected occurrence of record-breaking rainfalls can induce possible dangers of flooding.



Designated disaster evacuation site

(Opens according to the disaster situation)

1	Sakae Elementary School	1-1-61 Naniwahigashi
2	YOLO BASE	3-13-24 Ebisunishi

Designated disaster evacuation site & tsunami evacuation bldg.

(The former opens according to the disaster situation)

(The latter accepts evacuees if an evacuation information is issued*)

1	Former Tateba Elementary School	2-1-15 Tateba
2	Namba Junior High School	1-1-59 Shiokusa
3	Shiokusatateba Elementary School	1-4-31 Shiokusa
4	Nambatomomachi Elementary School	1-5-30 Motomachi
5	Shikitsu Elementary School	3-9-32 hikitsuigashi
6	Daikoku Elementary School	1-9-3 Daikoku
7	Kizu Junior High School	1-3-46 Ebisu-hommachi
8	Former Nitto Elementary School	3-1-23 Nippombashihigashi
9	Former Nippombashi Elementary School	3-2-27 Nippombashi
10	Imamiya High School	2-7-39 Ebisu-hommachi
11	Namba Special Needs School Naniwa High School for Student with Special Needs Education	2-3-30 Kizugawa
12	Osaka Chinese School	1-8-13 Shikitsuigashi
13	Nippombashi Elementary and Junior High School	1-7-6 Nippombashinishi

Tsunami evacuation bldg.

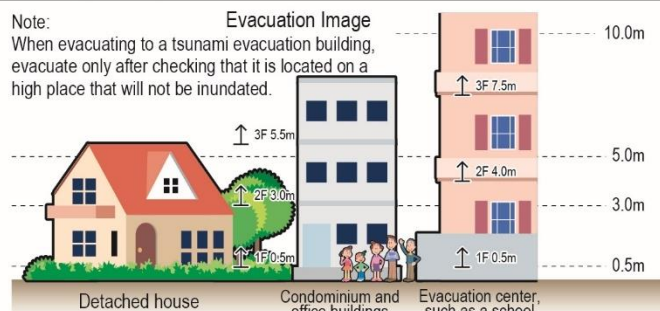
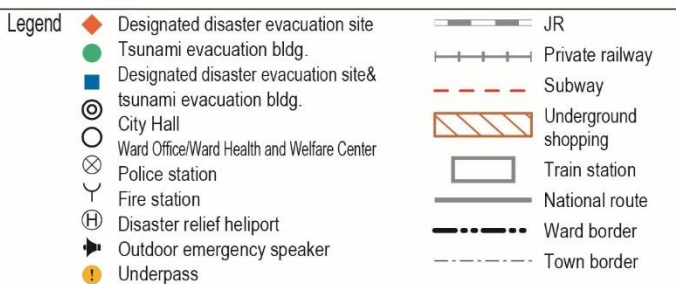
(Accepts evacuees if an evacuation information is issued*)

1	Municipal Naniwa Dairoku Housing 2 Gokan	2-3 Naniwanishi
2	Municipal Naniwa Dainana Housing 3 Gokan	3-4 Naniwahigashi
3	Municipal Naniwa Daihachi Housing 2 Gokan	1-6 Kuboyoshi
4	Municipal Naniwa Daikyu Housing 2 Gokan	4-1-40 Naniwanishi
5	Municipal Naniwa Daikyu Housing 3 Gokan	4-2 Naniwanishi
6	Municipal Naniwa Daiju Housing 1 Gokan	2-10-11 Naniwahigashi
7	Municipal Naniwa Daiju Housing 2 Gokan	2-9 Naniwahigashi
8	Municipal Naniwa Daiju Housing 3 Gokan	2-5 Naniwahigashi
9	Municipal Naniwa Nishi Daisan Housing 1 Gokan	1-11 Naniwanishi
10	Municipal Naniwa Nishi Daisan Housing 2 Gokan	2-4 Kizugawa
11	Municipal Naniwa Higashi Dani Housing 1 Gokan	2-2 Naniwahigashi
12	Municipal Naniwa Higashi Dani Housing 2 Gokan	2-4 Naniwahigashi
13	Municipal Daikoku Housing 1 Gokan	3-5-14 Daikoku
14	Municipal Daikoku Housing 2 Gokan	3-3-23 Daikoku
15	Municipal Daikoku Minami Housing 1 Gokan	2-18 Daikoku
16	Municipal Nishi Sakae Housing 1 Gokan	3-8 Naniwanishi
17	Municipal Nishi Sakae Housing 2 Gokan	3-1 Naniwanishi
18	Municipal Nishi Sakae Housing 3 Gokan	3-7 Naniwanishi
19	Municipal Shin Naniwa Daiichi Housing 1 Gokan	2-5 Naniwanishi
20	Municipal Shin Naniwa Daiichi Housing 2 Gokan	2-5 Naniwanishi
21	Municipal Shin Naniwa Daiichi Housing 3 Gokan	3-8 Naniwanishi
22	Municipal Shin Naniwa Daini Housing 1 Gokan	1-2 Naniwanishi
23	Municipal Shin Naniwa Daini Housing 2 Gokan	1-2 Naniwanishi
24	Municipal Shin Naniwa Daini Housing 3 Gokan	1-2 Naniwanishi
25	Municipal Nishihama Housing 1 Gokan	1-4 Naniwanishi
26	Municipal Nippombashi Housing 1 Gokan	5-20 Nippombashi
27	Municipal Nippombashi Housing 2 Gokan	5-15 Nippombashi
28	Municipal Nippombashi Housing 3 Gokan	5-20 Nippombashi
29	Municipal Nippombashi Housing 4 Gokan	5-16 Nippombashi
30	Municipal Nippombashi Housing 5 Gokan	5-16 Nippombashi
31	Municipal Shiokusa Daisan Housing 1 Gokan	2-1-25 Shiokusa
32	Municipal Inari Housing 1 Gokan	1-5-20 Inari
33	Municipal Nippombashi Nishi Housing 1 Gokan	2-2 Nippombashinishi
34	Municipal Nitto Housing 1 Gokan	3-3 Nippombashihigashi
35	Municipal Nitto Housing 2 Gokan	3-6-2 Nippombashihigashi
36	Municipal Nitto Housing 3 Gokan	5-2-18 Nippombashi
37	Municipal Shikitsu Higashi Housing 1 Gokan	3-5 Shikitsuigashi
38	Municipal Shiokusa Housing 1 Gokan	1-1-1 Shiokusa
39	Municipal Tateba Housing 1 Gokan	2-2-7 Tateba
40	Municipal Hirota Housing 1 Gokan	2-7-30 Nippombashinishi
41	Minatomachi River Place	1-3-1 Minatomachi
42	OCAT (Osaka City Air Terminal)	1-4-1 Minatomachi
43	Joshin Headquarters Building	1-6-5 Nippombashinishi

Tsunami evacuation bldg.

(Accepts evacuees if an evacuation information is issued*)

44	Joshin J & P Technoland	5-6-7 Nippombashi
45	Nitta Building	4-4-26 Sakuragawa
46	Shin-Osaka Mutual Aid Society Inc. Headquarters Building	1-7-23 Ebisu-hommachi
47	Shin-Osaka Mutual Aid Society Inc. Ceremony Hall	2-3-7 Ebisu-hommachi
48	Shin-Osaka Mutual Aid Society Inc. Shin Imamiya Building	3-14-13 Ebisunishi
49	Toyo Tec Co. Ltd.	1-7-18 Sakuragawa
50	Toyoko Inn Osaka Namba	2-8-7 Motomachi
51	Kansai Wire Netting Co., Ltd.	2-7-8 Inari
52	Unity Building	1-11-20 Motomachi
53	Newest Inc.	2-1-4 Saiwaicho
54	Kubota Corporation Headquarters Building, Building 2, Gymnasium	1-2-47 Shikitsuigashi
55	Toyo Shigyo Printing Co., Ltd Osaka Branch 3	1-3-18 Ashihara
56	Toyo Shigyo Printing Co., Ltd Kosoku Building	2-5-56 Ashihara
57	551 Horai Co., Ltd.	4-2-5 Sakuragawa
58	Iwase Esta Co., Ltd.	3-12-20 Motomachi
59	Osaka City Federation of Public Cleaning Co-operative Association	2-14-27 Ebisunishi
60	Japan Post Co., Ltd. Naniwa Post Office	3-10-1 Nambanaka
61	Toyota Corolla Naniwa Co., Ltd.	1-1-2 Shikitsunishi
62	Kansai Mazda Motor Corporation	1-3-25 Sakuragawa
63	Okamoto Electronics Corporation Headquarters Building	4-8-4 Nippombashi
64	Shodensha Shoden Store 1	3-8-9 Nippombashi
65	Nipponham West Sales Ltd.	2-8-3 Shiokusa
66	Osaka Kizu Wholesale Market	2-2-8 Shikitsuigashi
67	Ashihara Driving School	1-12-23 Naniwanishi
68	Suzuki Jihan Kinki Corporation Inc. Headquarters Building	1-1-5 Shikitsunishi
69	Home Center Kohnan JR Imamiya Ekimae Store	3-1-20 Naniwahigashi
70	U-Bank Eiwa	4-7-20 Nippombashi
71	Ehle Institute Building 3	3-13-1 Nambanaka
72	Yoyogi Seminar Osaka Minami School	1-2-3 Motomachi
73	Nissin Namba Inn	3-10-18 Motomachi
74	Yamada Denki Co., Ltd. LABI1 Namba Parking	2-11-35 Nambanaka
75	Namba Sankei Building	2-1-57 Minatomachi
76	Bellco City Hall Sakuragawa	2-2-28 Sakuragawa
77	Urbane Namba	2-1-34 Minatomachi
78	Urbane Namba West	2-2-22 Minatomachi
79	Weekly Green in Namba	2-7-23 Shikitsunishi
80	Namba Central Plaza River Garden	2-2-5 Minatomachi
81	Toyoko Inn Osaka Tsutenkaku Mae	2-3-4 Ebisuigashi
82	Municipal Naniwa Dainana Housing 1 Gokan	3-2-14 Naniwahigashi
83	Municipal Naniwa Dairoku Housing 1 Gokan	2-2 Naniwanishi
84	Municipal Naniwa Daikyu Housing 1 Gokan	4-1-50 Naniwanishi
85	Osaka Hospital Association Nursing College	2-13-9 Naniwanishi
86	Maruhan Shinsekai	3-4-36 Ebisuigashi
87	Hotel Sobial Namba Daikokucho	2-2-5 Shikitsunishi
88	LIFE Shiokusa Store	3-1-1 Shiokusa



*As of March 2021. (Please see the website for an updated list of designated hazard areas.)

*For the evacuation time limit, please see the "List of Registered Tsunami Evacuation Buildings" on Osaka City's website, the Osaka City Map Information Site, or your local noticeboard.