

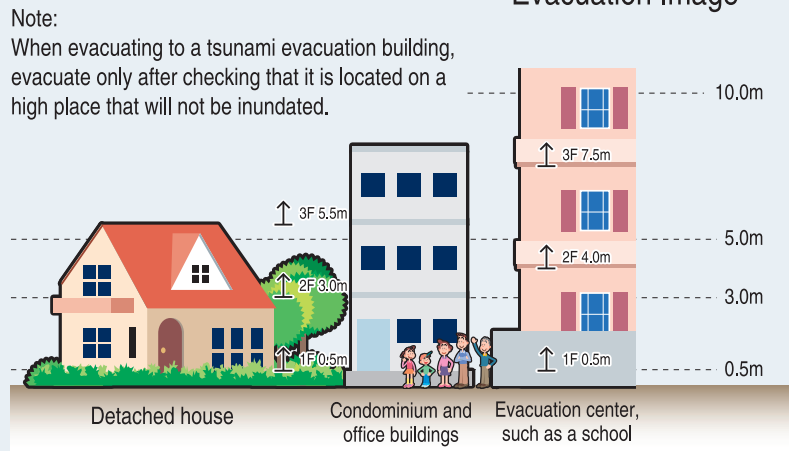
Flood Hazard Map for Nishiyodogawa Ward

In Nishiyodogawa Ward, inundation events due to flooding of the Yodo River and the Kanzaki River, a storm surge, and inland flooding and tsunami inundation events due to a Tonankai earthquake, a Nankai earthquake, and a massive Nankai Trough earthquake are assumed to occur.

- Is the area where you live prone to inundation?
- Where is the nearest safe evacuation shelter?
- Are there any roads or underpasses that could be covered with water on the way to the evacuation shelter?

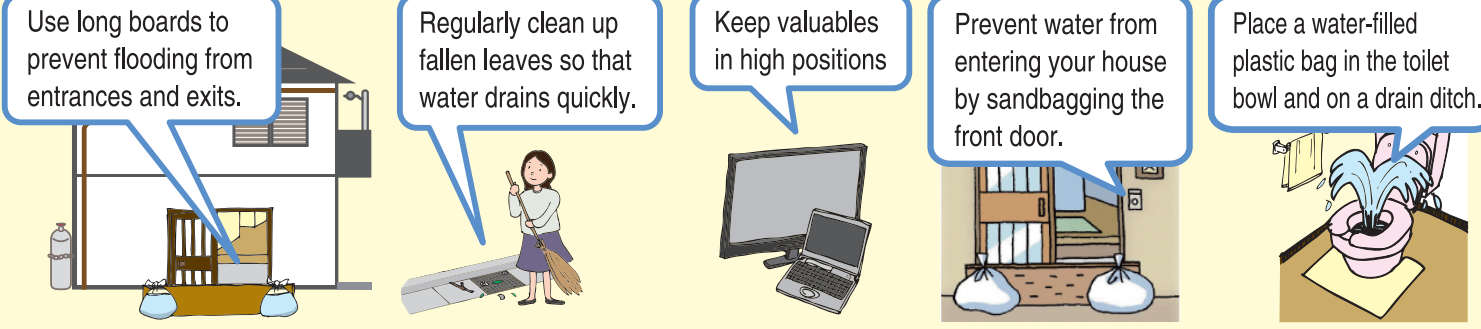
Using this map, check in advance where safe evacuation shelters (disaster shelters, etc.) are located and which evacuation route to take to ensure safe evacuation in the event of an emergency. In the event of a large-scale inundation, disaster shelters are expected to be crowded. If evacuation shelters are located far from your house, you should expect that it will take time for the elderly to evacuate. It is also important to secure more than one temporary shelter other than predesignated evacuation centers, such as securing condominium or other high buildings in the neighborhood by negotiating with owners in advance. Moreover, since it is dangerous to move out of your house during stormy weather, remaining in your house can be an alternative to evacuation as long as you have made appropriate disaster preparations at home.

Note:
When evacuating to a tsunami evacuation building, evacuate only after checking that it is located on a high place that will not be inundated.



Safety measures for your house

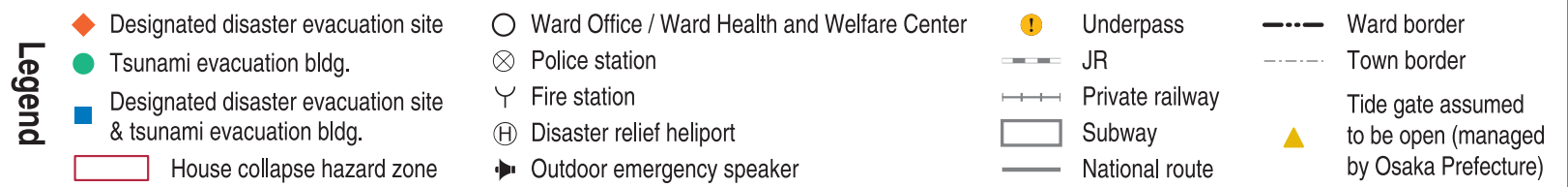
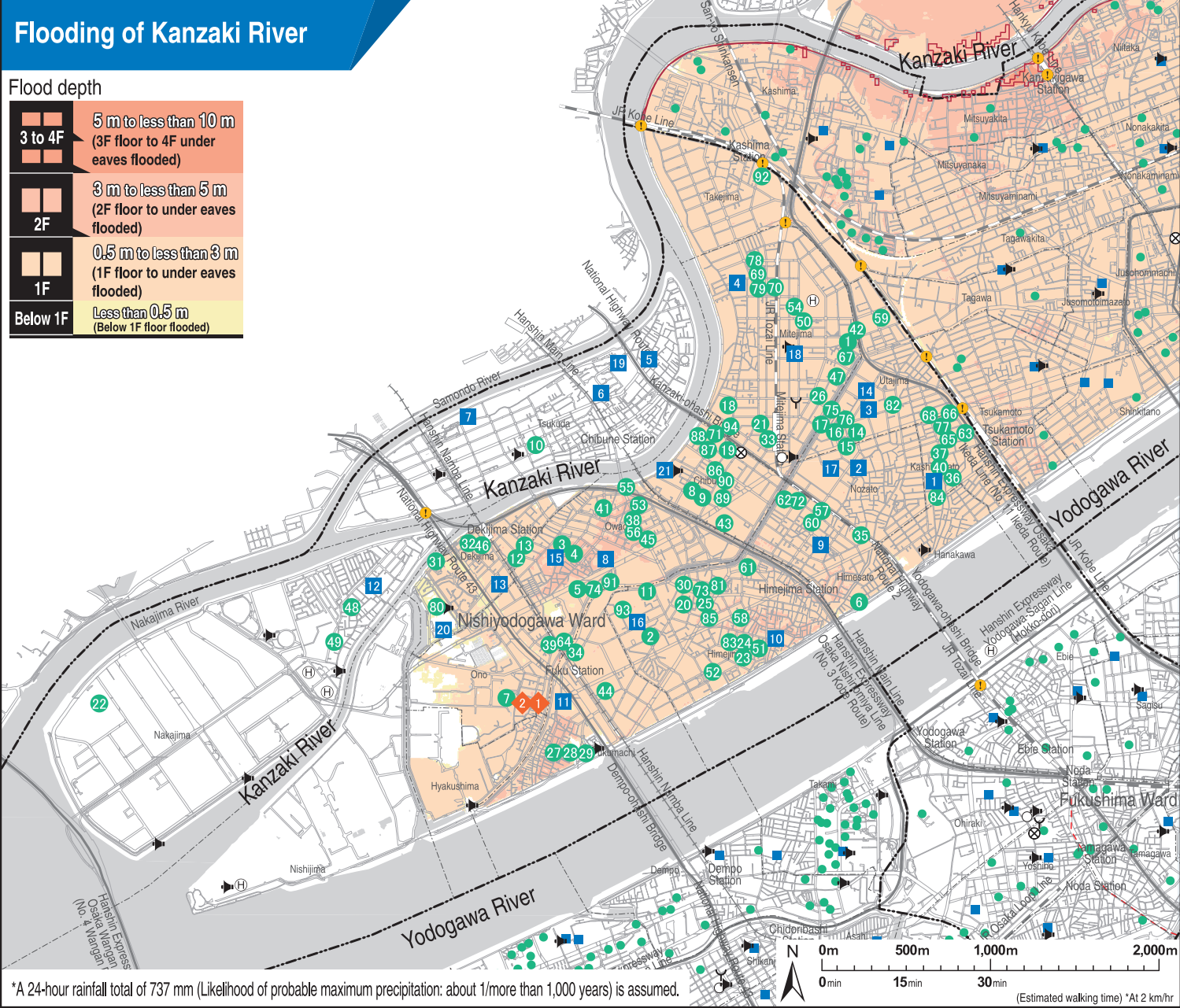
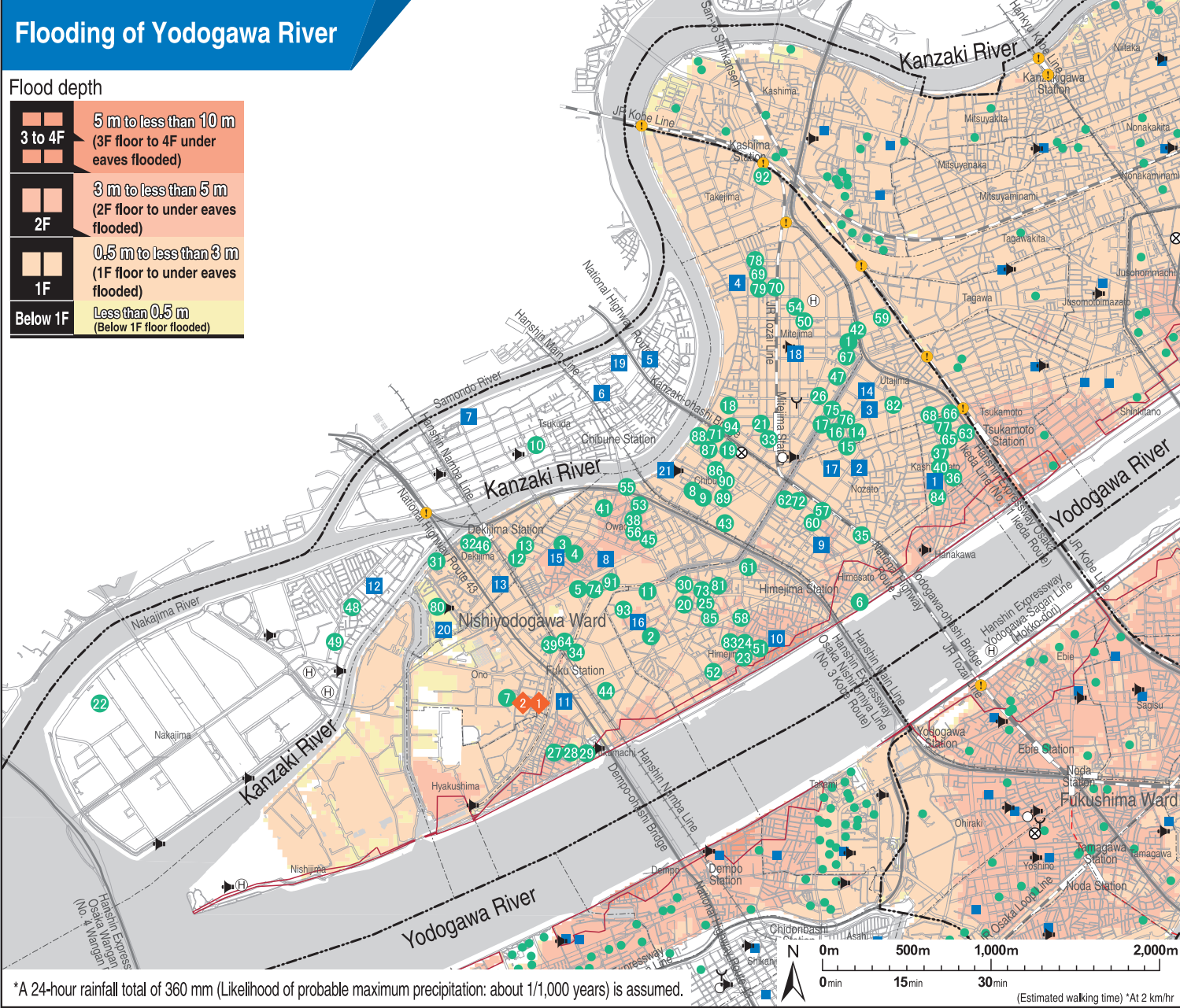
Reduce the likelihood of your house being inundated and your home contents damaged.



Map information site,
MapNavi Osaka



Hazard maps and disaster prevention facilities can be found online.



Designated disaster evacuation site

(Opens according to the disaster situation)

1 Onohyakushima Community Hall	3-7-11 Ono
2 Municipal Ono Housing Assembly Hall	3-7-11 Ono

Tsunami evacuation bldg.

(Accepts evacuees if an evacuation information is issued*)

1 Municipal Mitejima Higashi Housing 2 Gokan	3-10 Mitejima
2 Municipal Himeshima Daichi Housing 1 Gokan	6-10 Himeshima
3 Municipal Owada Daichi Housing 1 Gokan	5-3-10 Owada
4 Municipal Owada Daichi Housing 2 Gokan	5-2-20 Owada
5 Municipal Owada Daisan Housing 6 Gokan	2-4 Owada
6 Municipal Himeshima Housing 1 Gokan	1-3-41 Himeshima
7 Municipal Ono Housing 1 Gokan	3-7-11 Ono
8 Municipal Kanzakigawa Housing 1 Gokan	3-4 Chibune
9 Municipal Kanzakigawa Housing 2 Gokan	3-4 Chibune
10 Municipal Tsukuda Daini Housing 1 Gokan	4-4 Tsukuda
11 Municipal Himeshima Daisan Housing 1 Goto	6-9-38 Himeshima
12 Municipal Mitejima Daini Housing 1 Goto	1-3 Dekijima
13 Municipal Mitejima Daini Housing 2 Goto	1-3 Dekijima
14 Municipal Utajima Daini Housing 3 Goto	3-6 Utajima
15 Municipal Utajima Daini Housing 4 Goto	3-2 Utajima
16 Municipal Utajima Daini Housing 5 Goto	3-5 Utajima
17 Municipal Utajima Daini Housing 6 Goto	3-5 Utajima
18 Home Center Kohnan Mitejima Store	2-11-35 Mitejima
19 Nishiyodogawa Ward Home Care Services Center	2-7-7 Chibune
20 Geriatric Health Service Facility Himeshima Mizuhoen	5-11-24 Himeshima
21 Yutto Asahi	2-6-15 Mitejima
22 Nippon Express Co., Ltd. Hokuo Logistics Center	2-10-2 Nakajima
23 Liviare Himeshima	2-3-2 Himeshima
24 Park Avenue	2-4-10 Himeshima
25 Yasakaso	5-10-8 Himeshima
26 Il Salone Mitejima Store	1-15-8 Mitejima
27 Geriatric Health Service Facility Nagomidaira	2-1-7 Fukumachi
28 Geriatric Health Service Facility Suito Home Fukumachi	2-1-7 Fukumachi
29 Geriatric Health Service Facility Taiga	2-1-7 Fukumachi
30 River Park Yodogawa	4-20-5 Himeshima
31 Sunrature Dekijima	3-2 Dekijima
32 Riverside Dekijima	2-9-22 Dekijima
33 UR Utajimabashi	2-4-20 Mitejima
34 Hanshin Juken Green Road Koen Villa	3-4-55 Fukumachi
35 Sunrise Himeshima	2-2-38 Himeshima
36 Residence Kashiwazato	2-8-16 Kashiwazato
37 Sun Urregees	3-4-2 Kashiwazato
38 Casa Grande Jinda	4-8-24 Owada
39 Alkan Nibankan	1-2-2 Ono
40 Yutaka Gasket	2-10-32 Kashiwazato
41 Syusei Technical College	5-19-30 Owada
42 Jakuetsu Osaka Store	3-11-3 Mitejima
43 Himeshima MK Warehouse (Taiyo Kogei Distribution Center)	1-5-41 Chibune
44 King Mansion Shin Yodogawa	1-12-34 Fukumachi
45 Urban Yamamoto	4-2-31 Owada
46 Asahi Plaza Dekijima	2-9-4 Dekijima
47 Furure Utajima	3-1-10 Mitejima
48 Happiness Remon-no-Sato	1-18-47 Nakajima
49 Kuore Nishiyodogawa	1-19-43 Nakajima
50 Rex City Utajima Koen	3-14-18 Mitejima
51 Himeshima Daini Rose Mansion	2-4-29 Himeshima
52 Himeshima Dairana Rose Mansion	3-7-20 Himeshima
53 Grand Pia Chibune	3-9-17 Owada
54 Morimoto Pharma	5-8-28 Mitejima
55 Chibune River View	3-10-14 Owada
56 Asahi Plaza Chibune	4-7-30 Owada
57 Nishiyodogawa Post Office	3-1-33 Himeshima
58 Geriatric Health Service Facility Yodonosato	2-13-20 Himeshima
59 Ezaki Glico Co., Ltd. Gymnasium (Glico Plaza)	4-6-5 Utajima

Tsunami evacuation bldg.

(Accepts evacuees if an evacuation information is issued*)

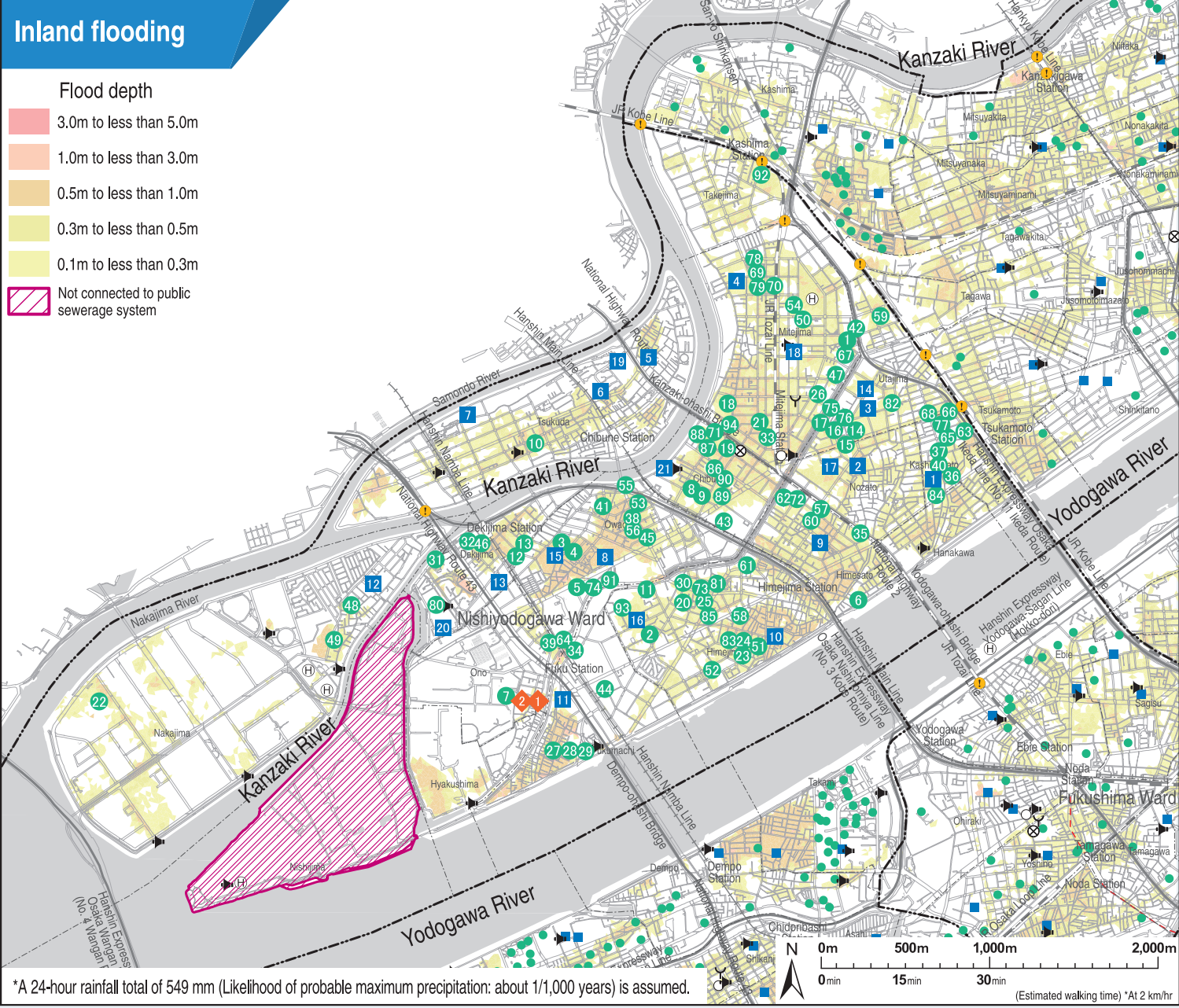
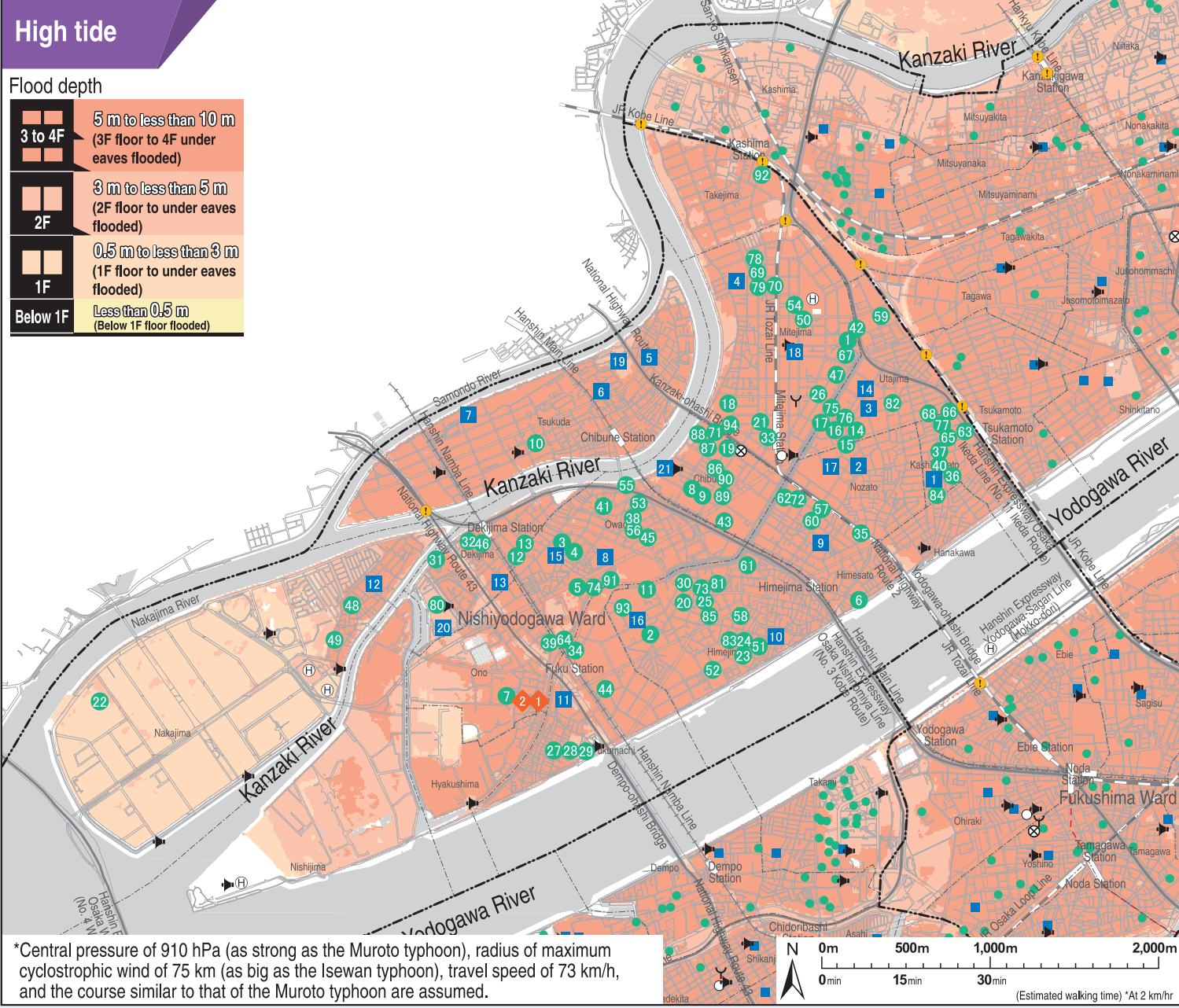
60 King Mansion Utajimabashi	3-2-3 Himeshima
61 Highness Coteau Himeshima Koen	4-11-12 Himeshima
62 Rene Park Oasis	3-13-48 Himeshima
63 Residence Hayano	3-1-31 Kashiwazato
64 Rex City Albert	2-6-8 Owada
65 Municipal Kashiwazato Daini Housing 5 Gokan	3-9 Kashiwazato
66 Municipal Kashiwazato Daini Housing 6 Gokan	3-14 Kashiwazato
67 Municipal Mitejima Higashi Housing 1 Gokan	3-9 Mitejima
68 Municipal Kashiwazato Daini Housing 1 Gokan	3-16 Kashiwazato
69 Municipal Mitejima Housing 2 Gokan	6-10 Mitejima
70 Municipal Mitejima Housing 5 Gokan	6-8 Mitejima
71 Ate Mitejima	2-15-8 Chibune
72 Osaka Rasenkan Kogyo Co., Ltd.	3-12-33 Himeshima
73 Grace Villa Himeshima	4-15-13 Himeshima
74 Municipal Owada Daisan Housing 1 Gokan	2-4-1 Owada
75 Municipal Utajima Daini Housing 1 Gokan	3-6 Utajima
76 Municipal Utajima Daini Housing 2 Gokan	3-6 Utajima
77 Municipal Kashiwazato Daini Housing 4 Gokan	3-15 Kashiwazato
78 Municipal Mitejima Housing 1 Gokan	6-10 Mitejima
79 Municipal Mitejima Housing 6 Gokan	6-7 Mitejima
80 Municipal Mitejima Housing 5 Gokan	3-3 Dekijima
81 Mensole Yamanoha	4-15-32 Himeshima
82 Live Court Tsukamoto	2-6-2 Utajima
83 Seiryu Himeshima	2-15-8 Himeshima
84 Belfore	2-11-1 Kashiwazato
85 Manabe Tekkou	5-7-28 Himeshima
86 Region Parks Chibune Koen	2-9-21 Chibune
87 Le Mont Chibune	2-13-4 Chibune
88 Sun Flat Utajimabashi	2-14-32 Chibune
89 Restage Luxe	3-1-2 Chibune
90 Laurel Court Mitejima	2-3-28 Chibune
91 Genaras Green Road	2-3-17 Owada
92 Gallei Group Headquarters Bldg. & Multistory Car Park	2-6-8 Takeshima
93 Municipa Himeshima Housing 1 Gokan	6-5-20 Himeshima
94 LIFE Mitejima Store	2-9-19 Mitejima

Designated disaster evacuation site & tsunami evacuation bldg.

(The former opens according to the disaster situation)
(The latter accepts evacuees if an evacuation information is issued*)

1 Kashiwazato Elementary School	2-13-33 Kashiwazato
2 Nozato Elementary School	2-21-13 Nozato
3 Utajima Elementary School	2-5-18 Utajima
4 Kamino Elementary School	6-5-25 Mitejima
5 Tsukuda Elementary School	1-21-12 Tsukuda
6 Tsukuda Nishi Elementary School	2-15-30 Tsukuda
7 Former Tsukuda Minami Elementary School	5-12-12 Tsukuda
8 Owada Elementary School	4-3-24 Owada
9 Himeshima Elementary School	2-8-24 Himeshima
10 Himeshima Elementary School	1-10-4 Himeshima
11 Fuku Elementary School	2-5-23 Fukumachi
12 Kawakita Elementary School	1-11-20 Nakajima
13 Dekijima Elementary School	2-2-24 Dekijima
14 Utajima Junior High School	2-11-9 Utajima
15 Yodo Junior High School	6-13-6 Owada
16 Nishiyodo Junior High School	6-10-5 Himeshima
17 Yodo Commercial High School	3-3-15 Nozato
18 Mitejima Elementary School	3-5-5 Mitejima
19 Tsukuda Junior High School	2-15-93 Tsukuda
20 Former Nishiyodogawa High School	3-3-6 Dekijima
21 Kobun Gakuen Girls' High School	3-8-22 Chibune

*As of March 2021. (Please see the website for an updated list of designated hazard areas.)
*For the evacuation time limit, please see the "List of Registered Tsunami Evacuation Buildings" on Osaka City's website, the Osaka City Map Information Site, or your local noticeboard.



Regular precautions and preparations

Have items ready that you can bring with you when you evacuate (emergency kit)

Items for emergency grab-and-go bag (backpack, etc.)

- Drinking water: Bare minimum, don't want it too heavy (about 2 to 3 500 ml PET bottles)
- Emergency food: Food that is easy to eat, doesn't expire quickly, can be eaten without cooking
- Valuables: Cash (10 yen coins (for payphone), bankbook, personal seal, copies of health insurance card and driver's license, etc.)
- Medical supplies: Disinfectant, bandage, triangular bandage, etc.
- Other: Whistle, Thick gloves (work gloves), Clothes (outerwear, underwear, socks), Portable heat patches, Plastic bag and wrap, Toiletries, hygiene products, masks, Shoes with durable soles, Dry cell and mobile batteries, Portable toilet, Tissues and wet wipes, Flashlight and lantern, Radio, Helmet and protective hood
- Rain and cold protection gear, Towel and handkerchief, Utility knife and can opener, Disposable ware (chopsticks, paper plates), Sanitary napkins and toilet paper

Aim for 15 kg for adult male, 10 kg for adult female. These are only rough standards. Limit what you bring with you to what you can carry by yourself.

Necessities for applicable families and households

- Infants: Baby food, Powder and liquid milk, Diapers, Baby wipes, etc.
- Pregnant women: Mother and child health handbook, Absorbent cotton Gauze, Items for newborns, etc.
- Elderly: Denture Food for the elderly, Adult diapers, etc.
- People with illnesses: Contact info for attending physician, Medicine for preexisting illnesses, Medicine notebook, etc.
- Pets: Leash, Cage, Toilet supplies, Pet food, etc.
- Other: Eyeglasses, Contact lenses, Hearing aid, etc.

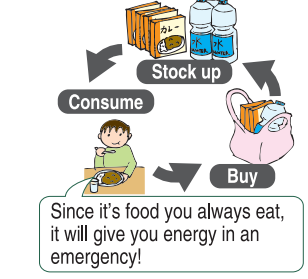
Have your stockpile ready

You may not be able to shop normally for several days after a natural disaster. Have peace of mind by adequately stocking basic necessities for yourself and your family on a day-to-day basis.

- Daily stocking: Stock up on food you often eat with long expiry dates; buy more when you consume them (rolling stock method)
- Food for at least 7 days: 3 liters a day per adult
- Drinking water for at least 7 days: Temporary toilet, waste storage containers, toilet bags, toilet paper
- Toilet supplies: Portable gas stove, gas canisters, solid fuel
- Fuel: Blanket, sleeping bag, Plastic wrap for food, Plastic tank

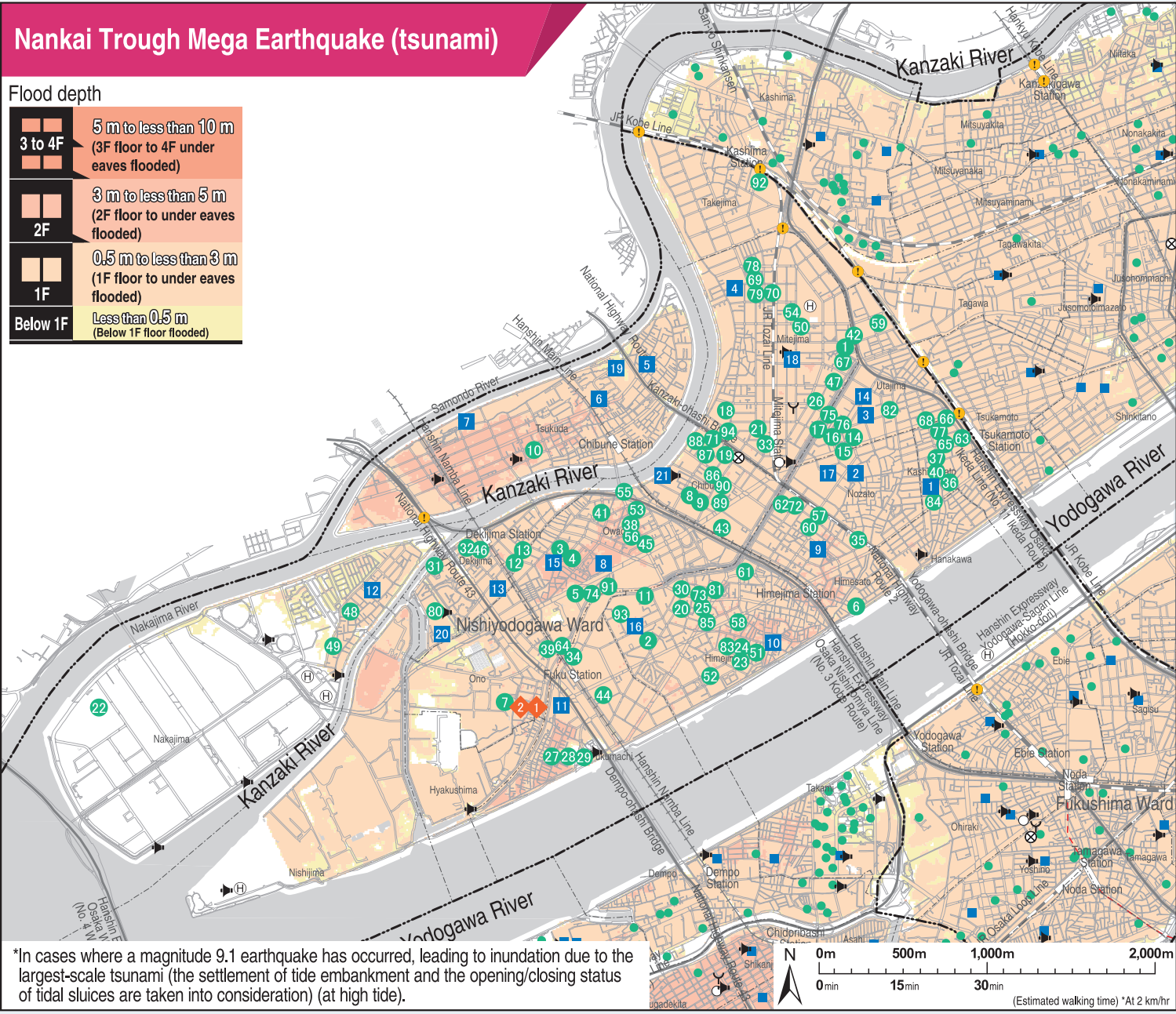
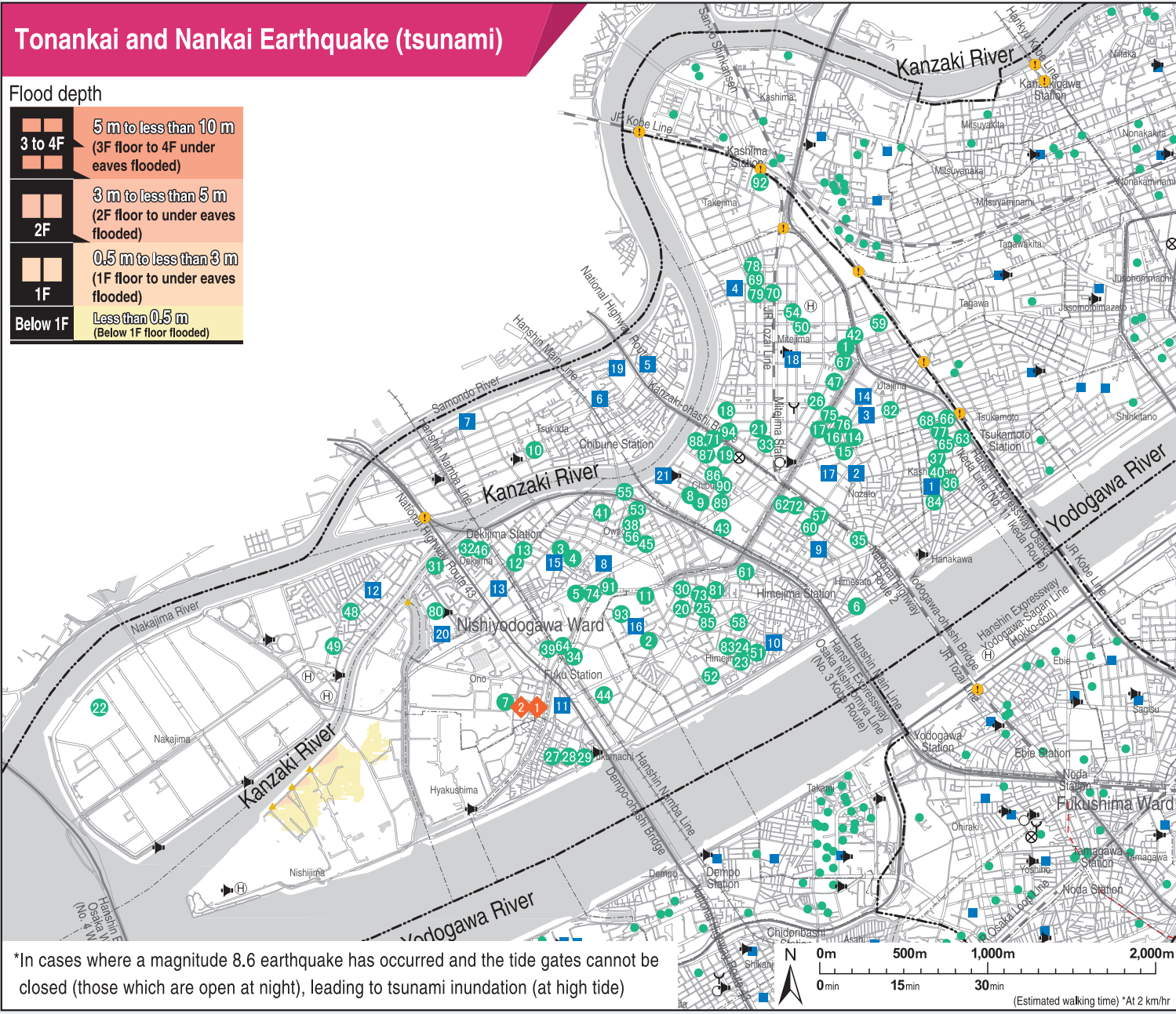
Rolling stock method

An economical method in which food is consumed before they expire.



Since it's food you always eat, it will give you energy in an emergency!

*This map shows hazard areas for flooding (river flooding, high tide, inland flooding, tsunami). It does not list designated safety areas and temporary safety areas. Please use this hazard map to find safe evacuation areas in the event of flooding.
*Flood-prone areas have underground shopping and facilities for the infirm. Please see the Regional Disaster Management Plan for more information. (The Regional Disaster Management Plan is available at your closest ward office, City Hall, and on Osaka City's website.)



*In cases where a magnitude 9.1 earthquake has occurred, leading to inundation due to the largest-scale tsunami (the settlement of tide embankment and the opening/closing status of tidal sluices are taken into consideration) (at high tide).