

# Flood Hazard Map for Higashiyodogawa Ward

In Higashiyodogawa Ward, inundation events due to flooding of the Yodo River, Kanzaki River, and Ai River, a storm surge, and inland flooding are assumed to occur.

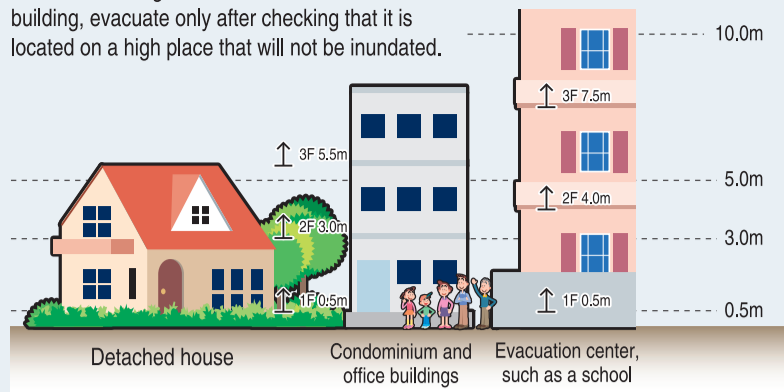
- Is the area where you live prone to inundation?
- Where is the nearest safe evacuation shelter?
- Are there any roads or underpasses that could be covered with water on the way to the evacuation shelter?

Using this map, check in advance where safe evacuation shelters (disaster shelters, etc.) are located and which evacuation route to take to ensure safe evacuation in the event of an emergency. In the event of a large-scale inundation, disaster shelters are expected to be crowded. If evacuation shelters are located far from your house, you should expect that it will take time for the elderly to evacuate.

It is also important to secure more than one temporary shelter other than predesignated evacuation centers, such as securing condominium or other high buildings in the neighborhood by negotiating with owners in advance.

Moreover, since it is dangerous to move out of your house during stormy weather, remaining in your house can be an alternative to evacuation as long as you have made appropriate disaster preparations at home.

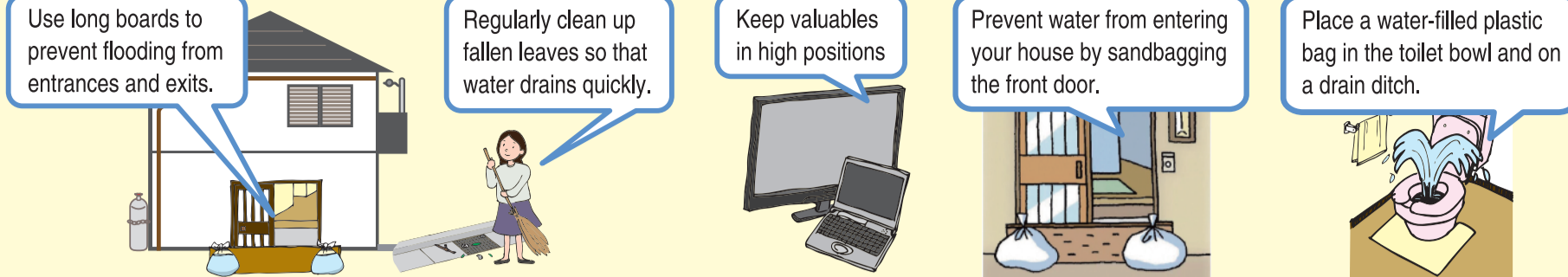
Note:  
When evacuating to a flood disaster evacuation building, evacuate only after checking that it is located on a high place that will not be inundated.



Evacuation Image

## Safety measures for your house

Reduce the likelihood of your house being inundated and your home contents damaged.



## Regular precautions and preparations

Have items ready that you can bring with you when you evacuate (emergency kit)

Items for emergency grab-and-go bag (backpack, etc.)

- ☐ Drinking water
  - Bare minimum, don't want it too heavy (about 2 to 3 500 ml PET bottles)
- ☐ Emergency food
  - Food that is easy to eat, doesn't expire quickly, can be eaten without cooking
- ☐ Valuables
  - Cash (10 yen coins for payphone), bankbook, personal seal, copies of health insurance card and driver's license, etc.
- ☐ Medical supplies
  - Disinfectant, bandage, triangular bandage, etc.
- ☐ Other
  - Whistle
  - Thick gloves (work gloves)
  - Clothes (outerwear, underwear, socks)
  - Portable heat patches
  - Plastic bag and wrap
  - Toiletries, hygiene products, masks
  - Shoes with durable soles
  - Dry cell and mobile batteries
  - Portable toilet
  - Tissues and wet wipes
  - Flashlight and lantern
  - Radio
  - Helmet and protective hood
  - Rain and cold protection gear
  - Towel and handkerchief
  - Utility knife and can opener
  - Disposable ware (chopsticks, paper plates)
  - Sanitary napkins and toilet paper

Aim for 15 kg for adult male 10 kg for adult female

These are only rough standards. Limit what you bring with you to what you can carry by yourself.

## Necessities for applicable families and households

**Infants**  
Baby food  
Powder and liquid milk  
Diapers  
Baby wipes, etc.

**Pregnant women**  
Mother and child health handbook  
Absorbent cotton Gauze  
Items for newborns, etc.

**Elderly**  
Denture  
Food for the elderly  
Adult diapers, etc.

**People with illnesses**  
Contact info for attending physician  
Medicine for preexisting illnesses  
Medicine notebook, etc.

**Pets**  
Leash  
Cage  
Toilet supplies  
Pet food, etc.

**Other**  
Eyeglasses  
Contact lenses  
Hearing aid, etc.

## Have your stockpile ready

You may not be able to shop normally for several days after a natural disaster. Have peace of mind by adequately stocking basic necessities for yourself and your family on a day-to-day basis.

- ☐ Daily stocking
  - Stock up on food you often eat with long expiry dates; buy more when you consume them (rolling stock method)

- ☐ Food for at least 7 days
  - Alpha rice that can be eaten by adding water, canned food, hardtack, instant and retort pouch food, dietary supplements, snacks, condiments, soup, etc.

- ☐ Drinking water for at least 7 days
  - 3 liters a day per adult

- ☐ Toilet supplies
  - Temporary toilet, waste storage containers, toilet bags, toilet paper

- ☐ Fuel
  - Portable gas stove, gas canisters, solid fuel

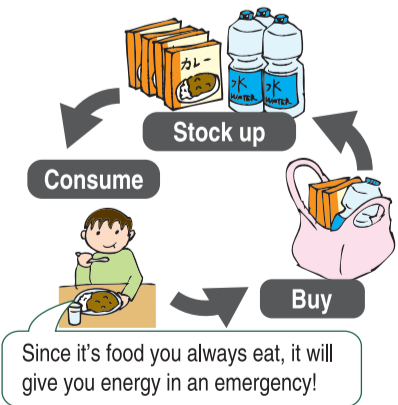
- ☐ Blanket, sleeping bag

- ☐ Plastic wrap for food

- ☐ Plastic tank

## Rolling stock method

An economical method in which food is consumed before they expire.



Map information site, MapNavi Osaka  
Hazard maps and disaster prevention facilities can be found online.

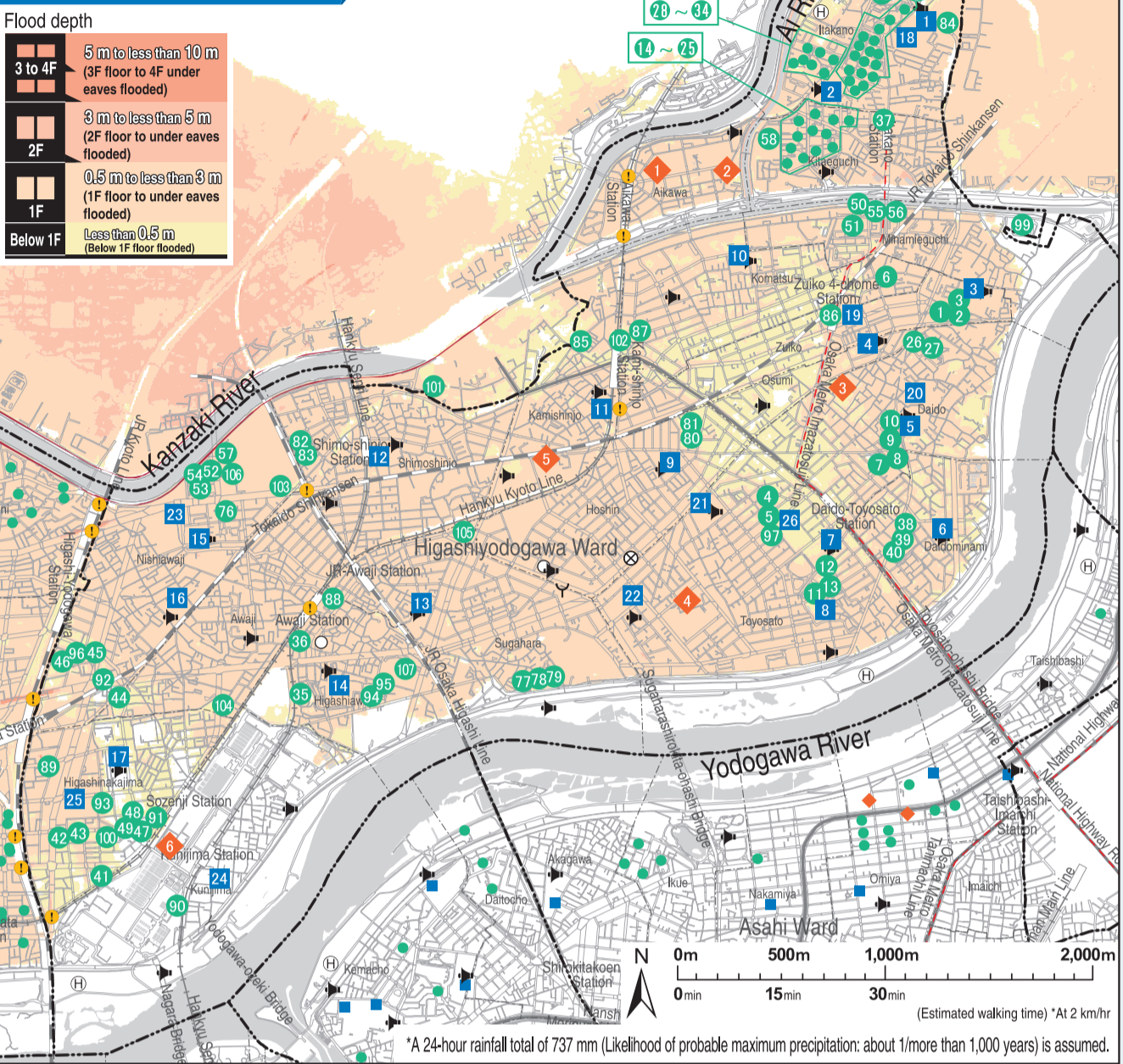


\*This map shows hazard areas for flooding (river flooding, high tide, inland flooding, tsunami). It does not list designated safety areas and temporary safety areas. Please use this hazard map to find safe evacuation areas in the event of flooding.  
\*Flood-prone areas have underground shopping and facilities for the infirm. Please see the Regional Disaster Management Plan for more information. (The Regional Disaster Management Plan is available at your closest ward office, City Hall, and on Osaka City's website.)

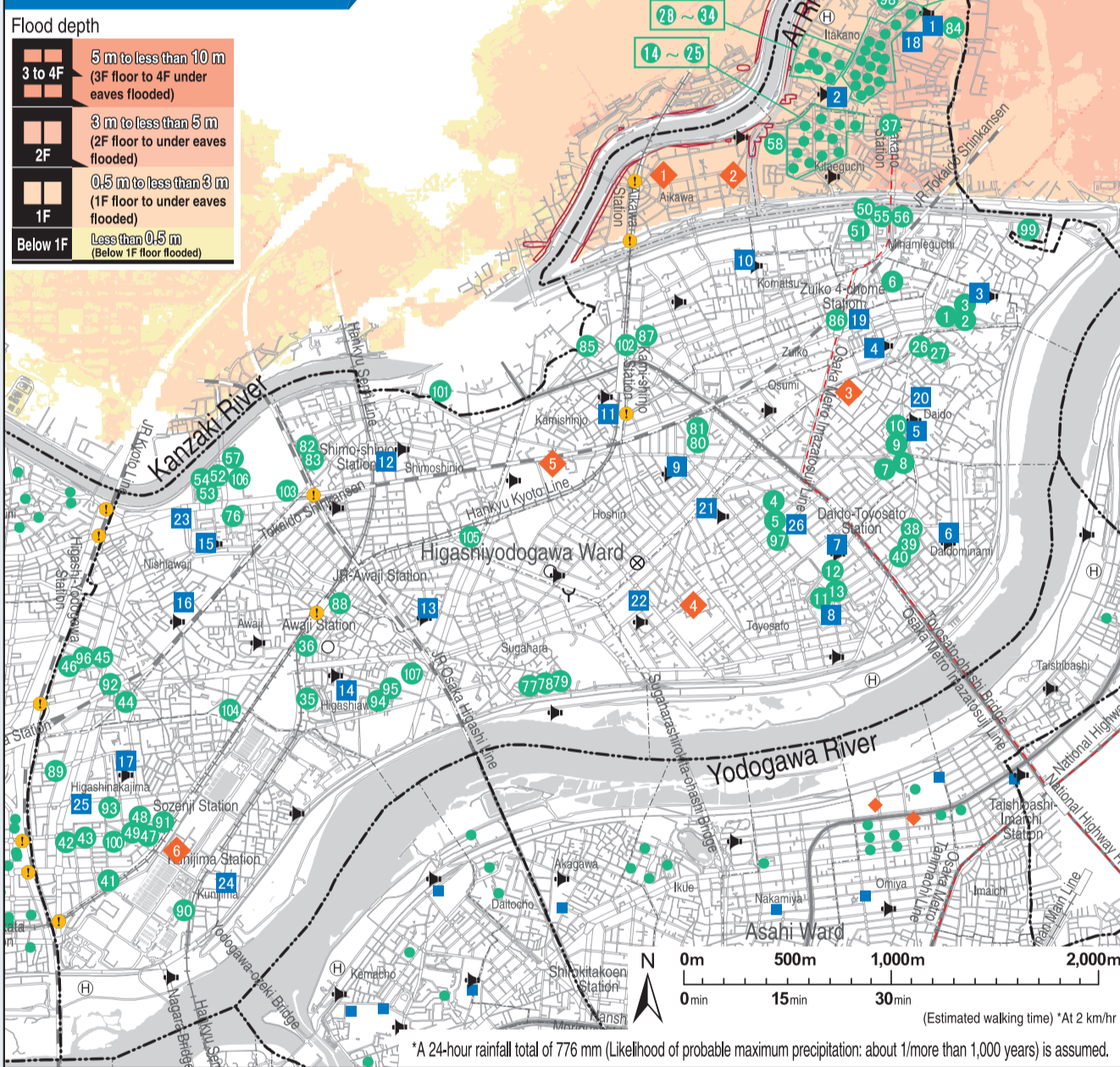
## Flooding of Yodogawa River



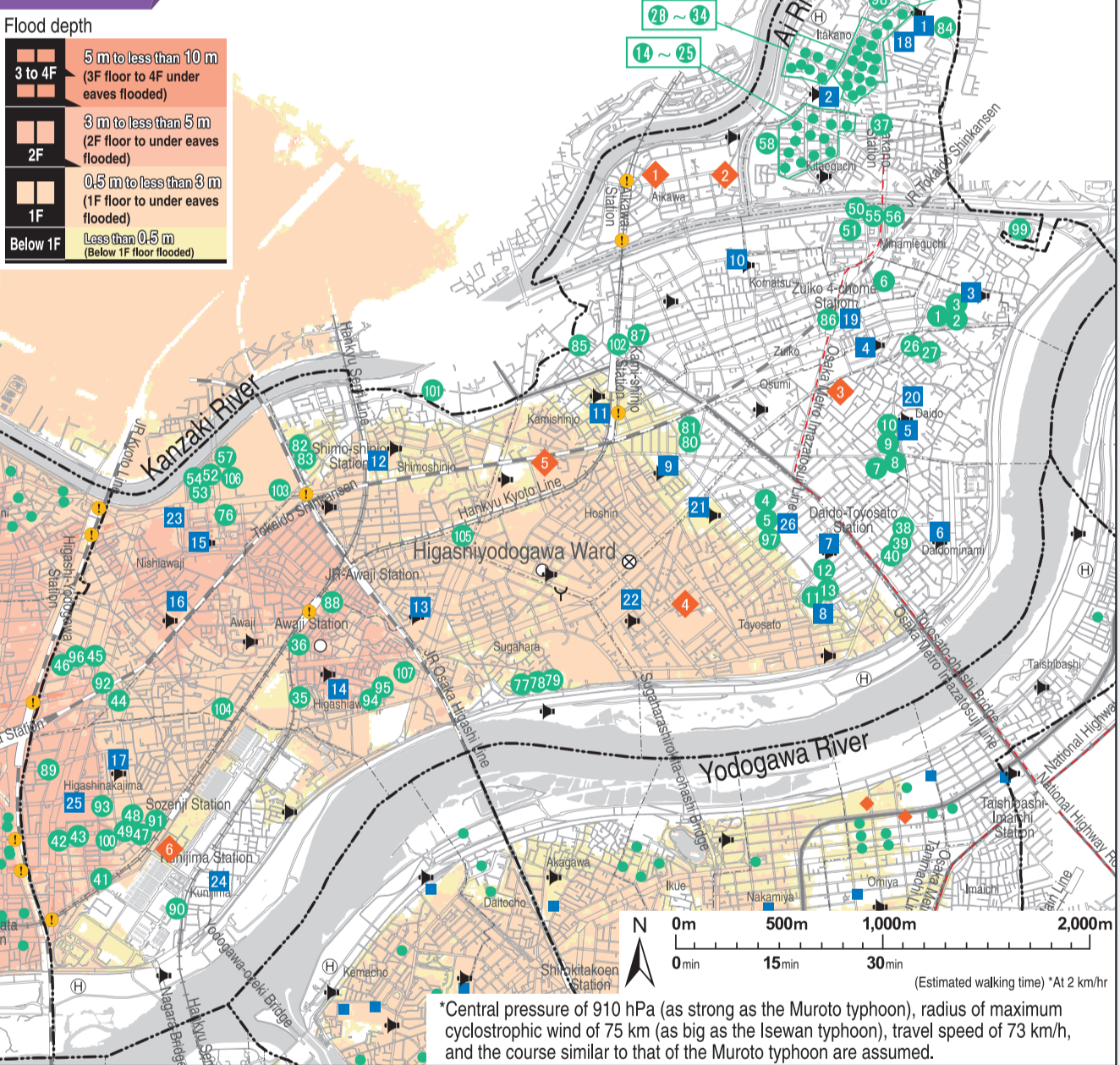
## Flooding of Kanzaki River



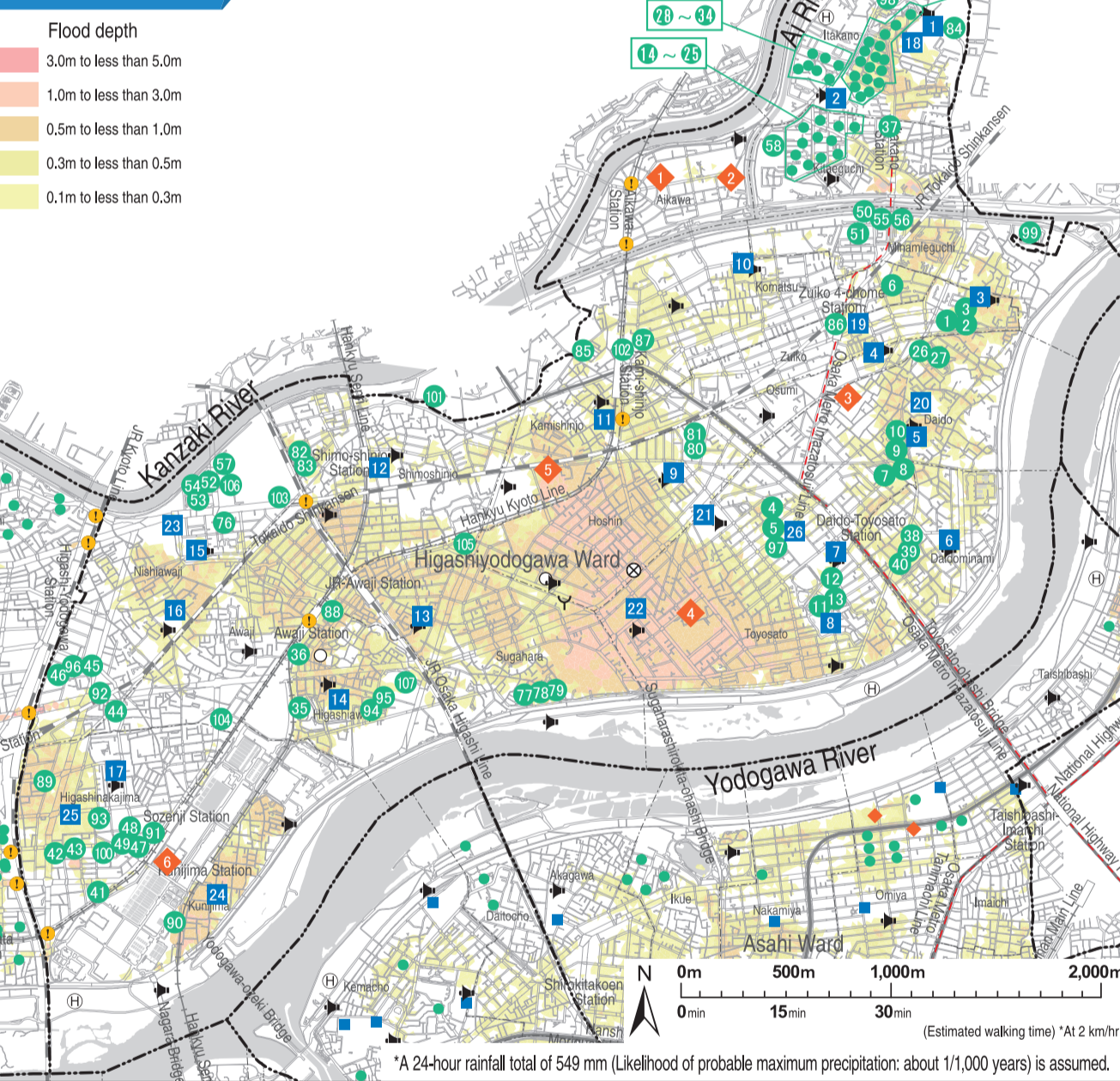
## Flooding of Ai River



## High tide



## Inland flooding



## Designated disaster evacuation site

(Opens according to the disaster situation)

1 Osaka High School	2-18-51 Aikawa
2 Osaka Seikei Gakuen	3-10-62 Aikawa
3 Gymnasium of Osaka University of Economics	3-16-10 Daido
4 Yodogawaseiryu High School	2-11-35 Toyosato
5 Kansai University Hokuyo Senior High School	1-3-26 Kamishinjo
6 Kunijima High School	1-7-106 Kunijima

## Flood disaster evacuation bldg.

(Accepts evacuees if an evacuation information is issued\*)

1 Municipal Zuiko Housing 1 Gokan	5-3-1 Zuiko
2 Municipal Zuiko Housing 2 Gokan	5-3-2 Zuiko
3 Municipal Zuiko Housing 3 Gokan	5-3-3 Zuiko
4 Municipal Toyosato Daini Housing 17 Gokan	7-17-17 Toyosato
5 Municipal Toyosato Daini Housing 18 Gokan	7-14-18 Toyosato
6 Municipal Komatsu Minami Housing 1 Gokan	5-6-1 Komatsu
7 Municipal Daido Housing 1 Gokan	1-17-1 Daido
8 Municipal Daido Housing 3 Gokan	3-1-3 Daido
9 Municipal Daido Housing 5 Gokan	3-5-5 Daido
10 Municipal Daido Housing 6 Gokan	3-5-6 Daido
11 Municipal Toyosato Housing 1 Gokan	5-15-1 Toyosato
12 Municipal Toyosato Housing 2 Gokan	5-15-2 Toyosato
13 Municipal Toyosato Housing 3 Gokan	5-15-3 Toyosato
14 Municipal Kita Eguchi Daini Housing 1 Gokan	1-3-1 Kitaeguchi
15 Municipal Kita Eguchi Daini Housing 2 Gokan	1-3-2 Kitaeguchi
16 Municipal Kita Eguchi Daini Housing 3 Gokan	1-3-3 Kitaeguchi
17 Municipal Kita Eguchi Daini Housing 4 Gokan	1-4-4 Kitaeguchi
18 Municipal Kita Eguchi Daini Housing 5 Gokan	1-4-5 Kitaeguchi
19 Municipal Kita Eguchi Daini Housing 6 Gokan	2-2-6 Kitaeguchi
20 Municipal Kita Eguchi Daini Housing 7 Gokan	2-2-7 Kitaeguchi

## Flood disaster evacuation bldg.

(Accepts evacuees if an evacuation information is issued\*)

21 Municipal Kita Eguchi Daini Housing 8 Gokan	2-3-8 Kitaeguchi
22 Municipal Kita Eguchi Daini Housing 9 Gokan	2-3-9 Kitaeguchi
23 Municipal Kita Eguchi Daini Housing 10 Gokan	3-5-10 Kitaeguchi
24 Municipal Kita Eguchi Daini Housing 11 Gokan	3-5-11 Kitaeguchi
25 Municipal Kita Eguchi Daini Housing 12 Gokan	3-4-12 Kitaeguchi
26 Municipal Kita Daido Housing 1 Gokan	5-5-1 Daido
27 Municipal Kita Daido Housing 3 Gokan	5-7-3 Daido
28 Municipal Itakano Housing 1 Gokan	1-4-1 Itakano
29 Municipal Itakano Housing 2 Gokan	1-4-2 Itakano
30 Municipal Itakano Housing 3 Gokan	1-4-3 Itakano
31 Municipal Itakano Housing 4 Gokan	1-4-4 Itakano
32 Municipal Itakano Housing 5 Gokan	1-4-5 Itakano
33 Municipal Itakano Housing 6 Gokan	1-4-6 Itakano
34 Municipal Itakano Housing 7 Gokan	1-4-7 Itakano
35 Municipal Itakano Housing 8 Gokan	1-4-8 Itakano
36 Municipal Higashi Awaji Daini Housing 5 Gokan	2-4-5 Higashiawaji
37 Municipal Higashi Awaji Daini Housing 1 Gokan	4-15-1 Higashiawaji
38 Municipal Kita Eguchi Housing 1 Gokan	3-3-1 Kitaeguchi
39 Municipal Daido Minami Housing 1 Gokan	1-8-1 Daidominami
40 Municipal Daido Minami Housing 2 Gokan	1-8-2 Daidominami
41 Municipal Daido Minami Housing 3 Gokan	1-8-3 Daidominami
42 Municipal Minamikata Housing 3 Gokan	2-6-3 Higashinakajima
43 Municipal Minamikata Housing 4 Gokan	2-12-4 Higashinakajima
44 Municipal Minamikata Housing 5 Gokan	2-13-5 Higashinakajima
45 Municipal Hinode Housing 11 Gokan	1-1-11 Awaji
46 Municipal Hinode Kita Housing 1 Gokan	1-10-10 Nishiwaji
47 Municipal Asuka Housing 3 Gokan	3-11-3 Higashinakajima
48 Municipal Asuka Housing 4 Gokan	3-11-4 Higashinakajima
49 Municipal Asuka Housing 5 Gokan	3-11-5 Higashinakajima

## Flood disaster evacuation bldg.

(Accepts evacuees if an evacuation information is issued\*)

50 Municipal Minami Eguchi Daini Housing 1 Gokan	1-2-1 Minamieguchi
51 Municipal Minami Eguchi Daini Housing 2 Gokan	1-5-2 Minamieguchi
52 Municipal Hokuyo Housing 1 Gokan	6-2-1 Nishiwaji
53 Municipal Hokuyo Housing 2 Gokan	6-2-2 Nishiwaji
54 Municipal Hokuyo Housing 3 Gokan	6-2-3 Nishiwaji
55 Municipal Minami Eguchi Housing 1 Gokan	2-2-1 Minamieguchi
56 Municipal Minami Eguchi Housing 2 Gokan	2-3-2 Minamieguchi
57 Municipal Nishi Awaji Housing 4 Gokan	6-5-4 Nishiwaji
58 Municipal Kita Eguchi Daisan Housing 1 Gokan	1-5-1 Kitaeguchi
59 Municipal Itakano Dairoku Housing 2 Gokan	3-7-2 Itakano
60 Municipal Itakano Dairoku Housing 3 Gokan	3-7-3 Itakano
61 Municipal Itakano Dairoku Housing 4 Gokan	3-6-7 Itakano
62 Municipal Itakano Dairoku Housing 5 Gokan	3-9-8 Itakano
63 Municipal Itakano Dairoku Housing 6 Gokan	3-9-9 Itakano
64 Municipal Itakano Dairoku Housing 7 Gokan	3-10-10 Itakano
65 Municipal Itakano Dairoku Housing 8 Gokan	3-10-11 Itakano
66 Municipal Itakano Dairoku Housing 9 Gokan	3-5-12 Itakano
67 Municipal Itakano Dairoku Housing 10 Gokan	1-30-13 Itakano
68 Municipal Itakano Dairoku Housing 11 Gokan	1-30-14 Itakano
69 Municipal Itakano Dairoku Housing 12 Gokan	1-30-15 Itakano
70 Municipal Itakano Dairoku Housing 13 Gokan	1-30-16 Itakano
71 Municipal Itakano Dairoku Housing 14 Gokan	3-5-17 Itakano
72 Municipal Itakano Dairoku Housing 15 Gokan	3-10-18 Itakano
73 Municipal Itakano Dairoku Housing 16 Gokan	3-11-19 Itakano
74 Municipal Itakano Dairoku Housing 17 Gokan	3-11-20 Itakano
75 Municipal Itakano Dairoku Housing 18 Gokan	3-11-21 Itakano
76 Municipal Awaji Housing 1 Gokan	5-9-1 Nishiwaji
77 Municipal Sugahara Daisan Housing 1 Gokan	1-6-1 Sugahara
78 Municipal Sugahara Daisan Housing 2 Gokan	1-6-2 Sugahara

## Flood disaster evacuation bldg.

(Accepts evacuees if an evacuation information is issued\*)

79 Municipal Sugahara Daisan Housing 3 Gokan	2-1-3 Sugahara
80 Municipal Hoshin Housing 1 Gokan	5-12-1 Hoshin
81 Municipal Hoshin Housing 2 Gokan	5-12-2 Hoshin
82 Municipal Shimoshinjo 4-chome Housing 1 Gokan	4-16-1 Shimoshinjo
83 Municipal Shimoshinjo 4-chome Housing 2 Gokan	4-16-2 Shimoshinjo
84 Itakano Golf Center	4-7-85 Itakano
85 Kyokuto Engineering Co., Ltd.	3-16-11 Kamishinjo
86 Osaka Branch, Kawamoto Pump Mfg. Co., Ltd.	3-8-20 Zuiko
87 Avenue Komatsu Building	1-3-15 Komatsu
88 Acacia Awaji Store	4-33-34 Higashiawaji
89 Shin-Osaka Building East	1-17-18 Higashinakajima
90 Haman Chemicals, Ltd.	1-4-31 Kunijima
91 Municipal Asuka Housing 2 Gokan	3-13-2 Higashinakajima
92 Municipal Hinode Housing 10 Gokan	2-6-10 Nishiwaji
93 Municipal Asuka Nishi Housing 2 Gokan	3-6-1 Higashinakajima
94 Municipal Higashi Awaji Housing 1 Gokan	3-5-1 Higashiawaji
95 Municipal Higashi Awaji Housing 2 Gokan	3-5-2 Higashiawaji
96 Municipal Hinode Kita Housing 3 Gokan	1-8-3 Nishiwaji
97 Municipal Toyosato Daini Housing 19 Gokan	7-4-19 Toyosato
98 Municipal Itakano Daiyon Housing 1 Gokan	4-4-1 Itakano
99 Osaka Koki Kankyo Shisetsu Kumiai Higashiyodo Plant	3-16-6 Minamieguchi
100 Municipal Minamikata Housing 1 Gokan	7-53 Higashinakajima
101 Meiji School of Oriental Medicine	7-53 Nishiotabisho, Suita
102 House Fudosan Building	1-2-7 Komatsu
103 Kicono Nishiwaji (multistory car park)	6-4-120 Nishiwaji
104 Charm Shin-osaka Awaji	2-3-6 Awaji
105 Round 1 Higashiyodogawa	7-14-29 Sugahara
106 LIFE Nishiwaji Store	6-3-2 Nishiwaji
107 LIFE Higashiawaji Store	5-8-35 Higashiawaji

## Designated disaster evacuation site & flood disaster evacuation bldg.

(The former opens according to the disaster situation)

1 Higashi Itakano Elementary School	2-8-28 Itakano
2 Itakano Elementary School	1-28-17 Itakano
3 Osumi Higashi Elementary School	5-8-19 Zuiko
4 Osumi Nishi Elementary School	2-3-18 Osumi
5 Daido Elementary School	4-1-15 Daido
6 Daido Minami Elementary School	1-23-6 Daidominami
7 Toyosato Elementary School	5-14-60 Toyosato
8 Toyosato Minami Elementary School	5-12-41 Toyosato
9 Hoshin Elementary School	4-17-26 Hoshin
10 Komatsu Elementary School	3-18-15 Komatsu
11 Shinjo Elementary School	2-20-5 Kamishinjo
12 Shimoshinjo Elementary School	5-2-9 Shimoshinjo
13 Sugahara Elementary School	6-3-25 Sugahara
14 Higashi Awaji Elementary School	3-3-32 Higashiawaji
15 Nishi Awaji Elementary School	5-5-32 Nishiwaji
16 Former Nishi Awaji Elementary School	3-14-11 Nishiwaji
17 Mukunoki Gakuen (Katsuta Elementary School and Nakajima Junior High School)	4-8-38 Higashinakajima
18 Itakano Junior High School	2-8-13 Zuiko
19 Zuiko Junior High School	4-9-37 Zuiko
20 Daido Junior High School	4-5-8 Daido
21 Higashiyodo Junior High School	6-25-19 Toyosato
22 Shin Higashiyodo Junior High School	1-10-32 Toyosato
23 Awaji Junior High School	4-25-53 Nishiwaji
24 Kunijima Junior High School	2-8-36 Kunijima
25 Higashiyodogawa Special Needs School	3-5-22 Higashinakajima
26 Osaka Kita Special Needs School for the Visually Impaired	7-5-26 Toyosato

\*As of March 2021. (Please see the website for an updated list of designated hazard areas.)  
\*For the evacuation time limit, please see the "List of Registered Flood Disaster Evacuation Buildings" on Osaka City's website, the Osaka City Map Information Site, or your local noticeboard.