

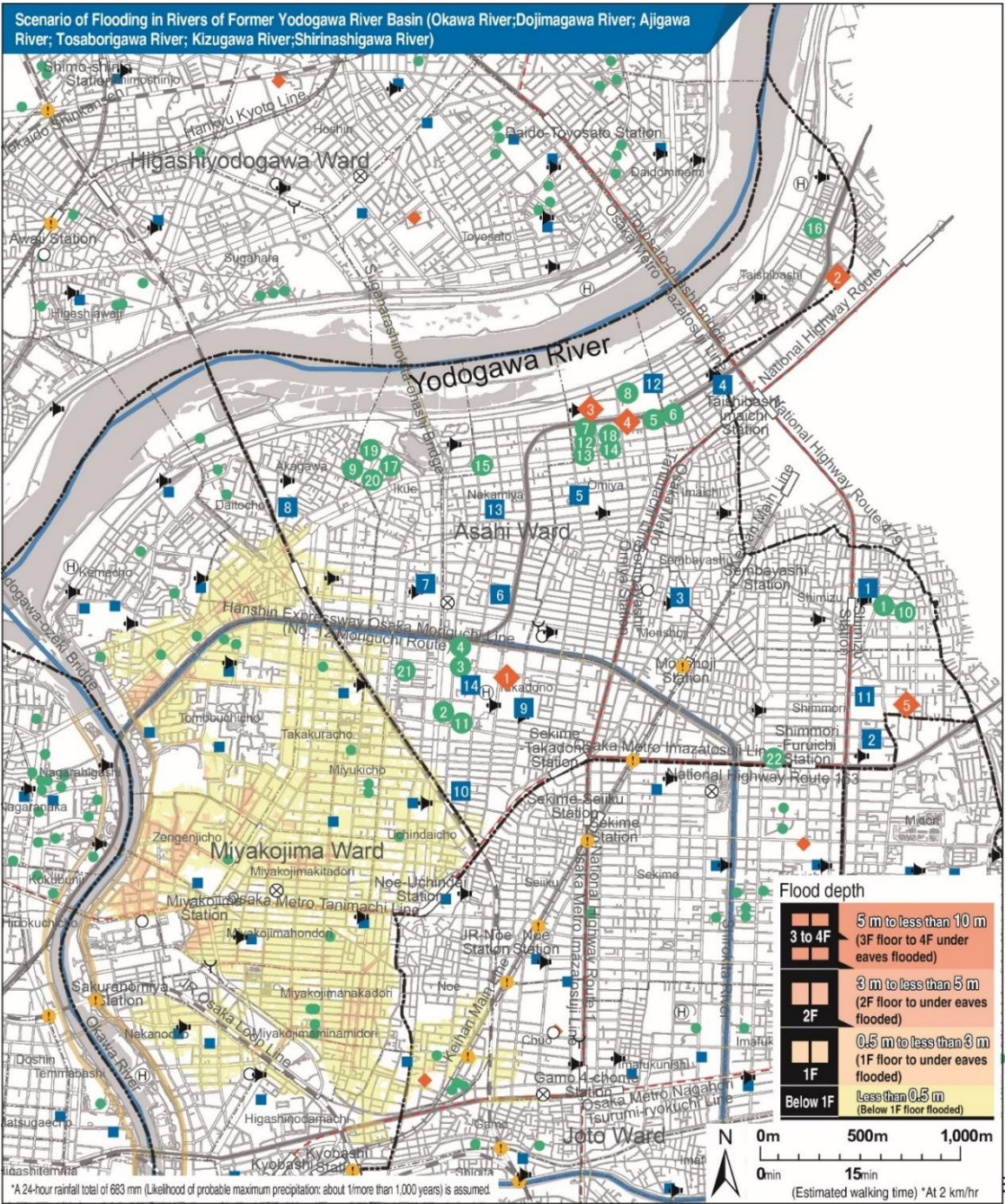
# Additional Content for “Flood Disaster Prevention Map” (March 2021 Version)

## 【Asahi Ward】

The Osaka Prefectural Government announced the new flood risk zones on February 2022. The diagram below will be added on to the Flood Disaster Prevention Map (March 2021 Version).

Scenario conditions		Released	Contact Information	Telephone number
Announcement of Storm Surge Warning in Osaka City Area 24-hour total rainfall: 683 mm/hour Maximum rainfall: 138.1 mm/hour	Probable maximum precipitation (Likelihood: 1/more than 1,000 years)	Feb.2022	Nishi Osaka Flood Control Office, Osaka Prefecture	06-6541-7771

※In the situation when “Storm Surge Warning in Osaka City Area” is announced, (Kizugawa Sluice Gate, Ajigawa Sluice Gate, and Shirinashigawa Sluice Gate are closed) the projected occurrence of record-breaking rainfalls can induce possible dangers of flooding.





## Designated disaster evacuation site

(Opens according to the disaster situation)

1	Asahi High School	5-6-41 Takadono
2	Yodogawa Technology High School	3-1-32 Taishibashi
3	Osaka Institute of Technology	5-16-1 Omiya
4	Shisei Special Needs School	5-11-7 Omiya
5	Koyo Special Needs School	6-8-21 Shimmori

## Designated disaster evacuation site & flood disaster evacuation bldg.

(The former opens according to the disaster situation)

(The latter accepts evacuees if an evacuation information is issued\*)

1	Shimizu Elementary School	5-1-12 Shimizu
2	Shin Morishoji Elementary School	6-3-13 Shimmori
3	Furuichi Elementary School	2-10-35 Morishoji
4	Taishibashi Elementary School	1-12-15 Taishibashi
5	Omiya Elementary School	4-9-16 Omiya
6	Omiya Nishi Elementary School	1-8-14 Nakamiya
7	Ikue Elementary School	1-10-21 Ikue
8	Shirokita Elementary School	3-13-47 Akagawa
9	Takadono Elementary School	6-9-10 Takadono
10	Takadono Minami Elementary School	3-10-30 Takadono
11	Kyokuto Junior High School	6-7-25 Shimmori
12	Imaichi Junior High School	5-13-40 Omiya
13	Omiya Junior High School	4-7-11 Nakamiya
14	Kyokuyo Junior High School	5-9-31 Takadono

## Flood disaster evacuation bldg.

(Accepts evacuees if an evacuation information is issued\*)

1	Municipal Ryogoku Housing 5 Gokan	5-4 Shimizu
2	Municipal Takadono Nishi Housing 9 Gokan	5-1 Takadono
3	Municipal Takadono Kita Housing 1 Gokan	5-12 Takadono
4	Municipal Takadono Kita Housing 2 Gokan	5-12 Takadono
5	Municipal Omiya Housing 1 Gokan	5-12 Omiya
6	Municipal Imaichi Housing 1 Gokan	1-9 Taishibashi
7	Municipal Shirokita Housing 1 Gokan	5-9 Omiya
8	Municipal Shirokita Housing 2 Gokan	5 Omiya
9	Municipal Shin-Ikue Housing 1 Gokan	3-21 Ikue
10	Municipal Ryogoku Housing 1 Gokan	4-11 Shimizu
11	Municipal Takadono Nishi Housing 8 Gokan	5-2 Takadono
12	Municipal Shirokita Housing 12 Gokan	5-8 Omiya
13	Municipal Shirokita Housing 13 Gokan	5-1 Omiya
14	Municipal Shirokita Housing 14 Gokan	5-2 Omiya
15	Municipal Shirokita Nakamiya Housing 1 Gokan	5-1-1 Nakamiya
16	Municipal Hashidera Housing 1 Gokan	3-8-1 Taishibashi
17	Municipal Shin-Ikue Housing 2 Gokan	3-16-2 Ikue
18	Municipal Shirokita Housing 15 Gokan	5-7-15 Omiya
19	Municipal Ikue Housing 9 Gokan	3-24 Ikue
20	Municipal Ikue Housing 13 Gokan	3-17 Ikue
21	Municipal Takadononishi Daiyon Housing 1 Gokan	2-16-1 Takadono
22	Saintpaulia Shinmori Koen	4-1-27 Shinmori

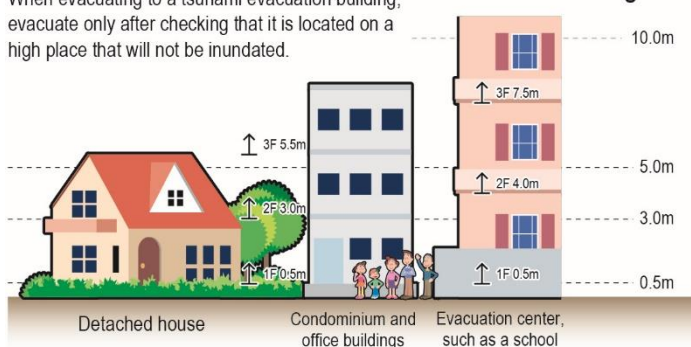
## Legend

◆ Designated disaster evacuation site	— JR
● Tsunami evacuation bldg.	— Private railway
■ Designated disaster evacuation site & tsunami evacuation bldg.	- - - Subway
⊙ City Hall	▨ Underground shopping
○ Ward Office/Ward Health and Welfare Center	□ Train station
⊗ Police station	— National route
⌵ Fire station	- - - Ward border
Ⓜ Disaster relief heliport	- - - Town border
📢 Outdoor emergency speaker	
⚠ Underpass	

Note:

When evacuating to a tsunami evacuation building, evacuate only after checking that it is located on a high place that will not be inundated.

## Evacuation Image



\*As of March 2021. (Please see the website for an updated list of designated hazard areas.)

\*For the evacuation time limit, please see the "List of Registered Tsunami Evacuation Buildings" on Osaka City's website, the Osaka City Map Information Site, or your local noticeboard.