

Flood Hazard Map for Tsurumi Ward

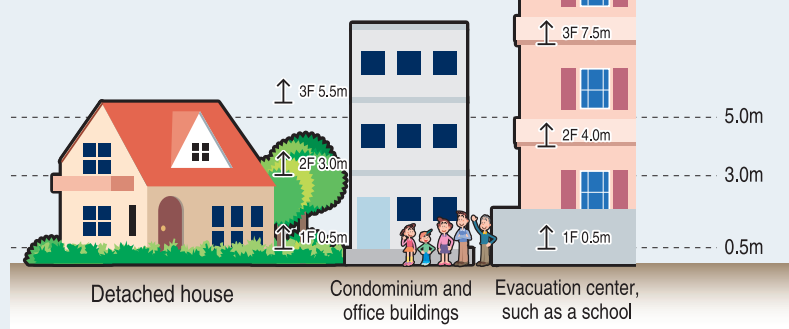
In Tsurumi Ward, inundation events due to flooding of the Yodo River, flooding in the Neyagawa River basin (Neyagawa River, Second Neyagawa River, Hirano River, diversion aqueducts of Hirano River, and Furukawa River), a storm surge, and inland flooding and tsunami inundation events due to a massive Nankai Trough earthquake are assumed to occur.

- Is the area where you live prone to inundation?
- Where is the nearest safe evacuation shelter?
- Are there any roads or underpasses that could be covered with water on the way to the evacuation shelter?

Using this map, check in advance where safe evacuation shelters (disaster shelters, etc.) are located and which evacuation route to take to ensure safe evacuation in the event of an emergency. In the event of a large-scale inundation, disaster shelters are expected to be crowded. If evacuation shelters are located far from your house, you should expect that it will take time for the elderly to evacuate. It is also important to secure more than one temporary shelter other than predesignated evacuation centers, such as securing condominium or other high buildings in the neighborhood by negotiating with owners in advance.

Moreover, since it is dangerous to move out of your house during stormy weather, remaining in your house can be an alternative to evacuation as long as you have made appropriate disaster preparations at home.

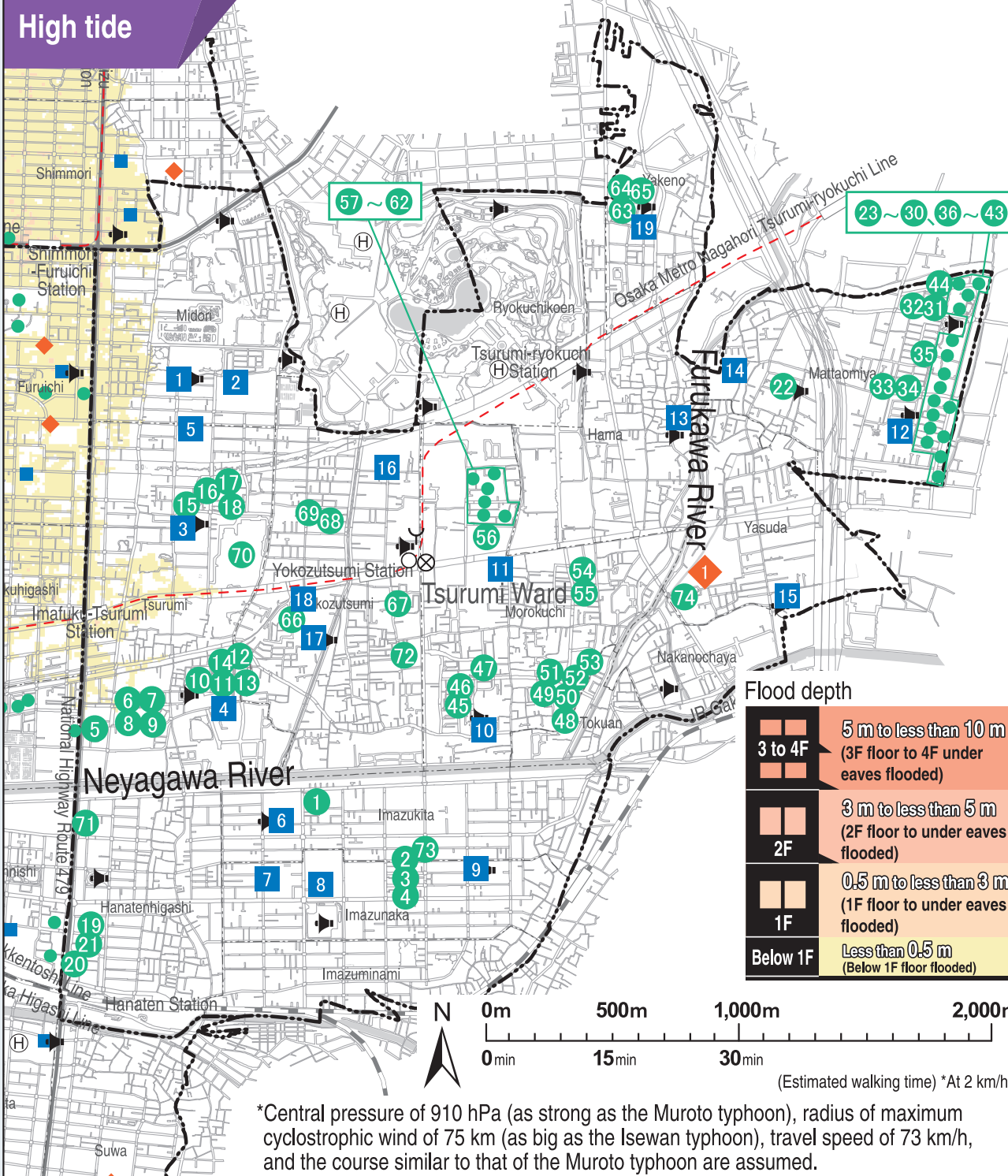
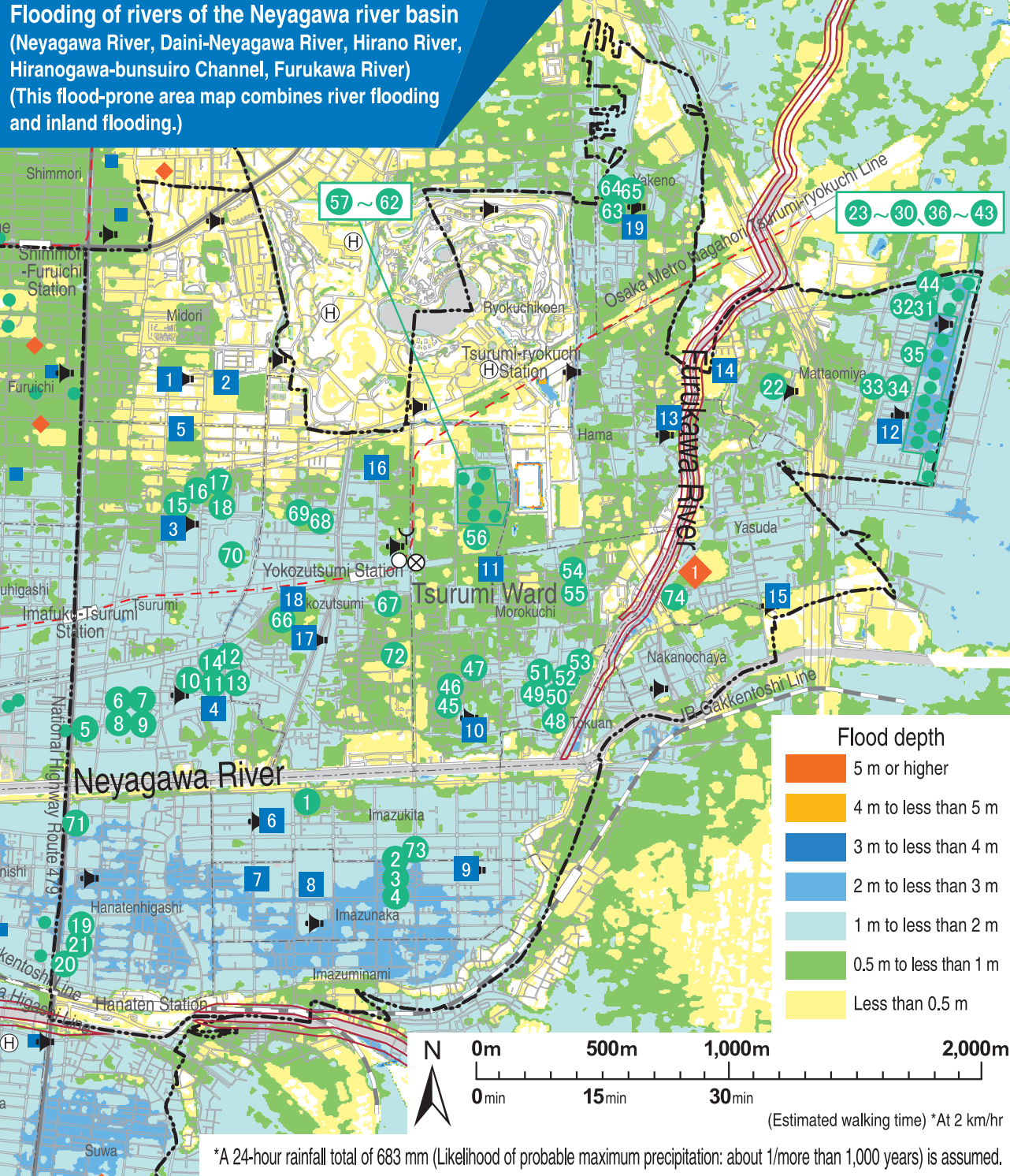
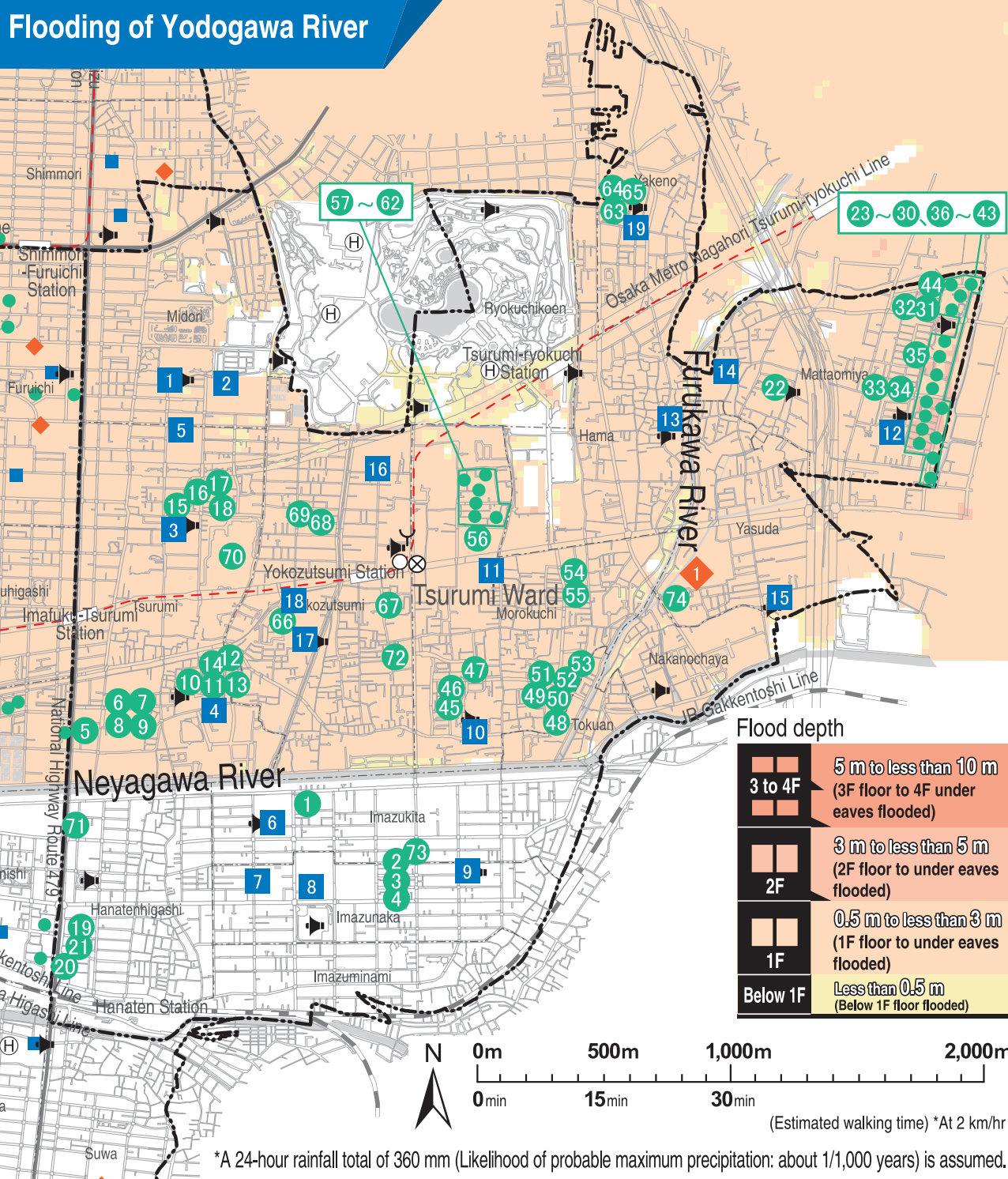
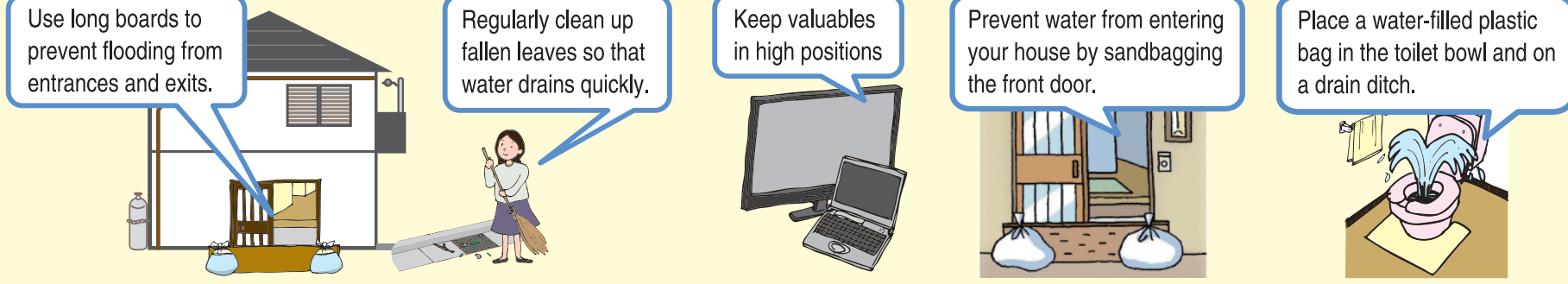
Note:
When evacuating to a flood disaster evacuation building, evacuate only after checking that it is located on a high place that will not be inundated.



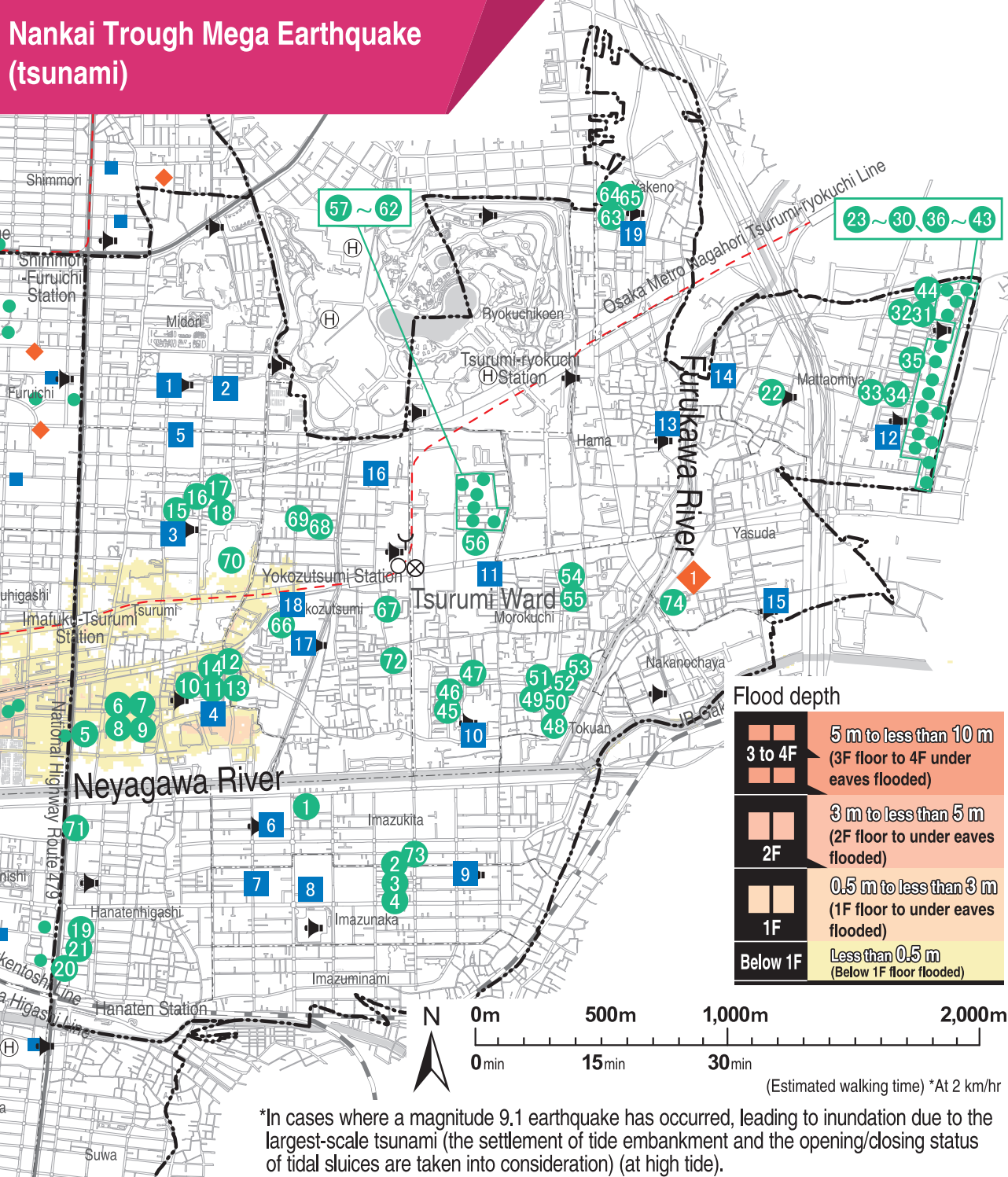
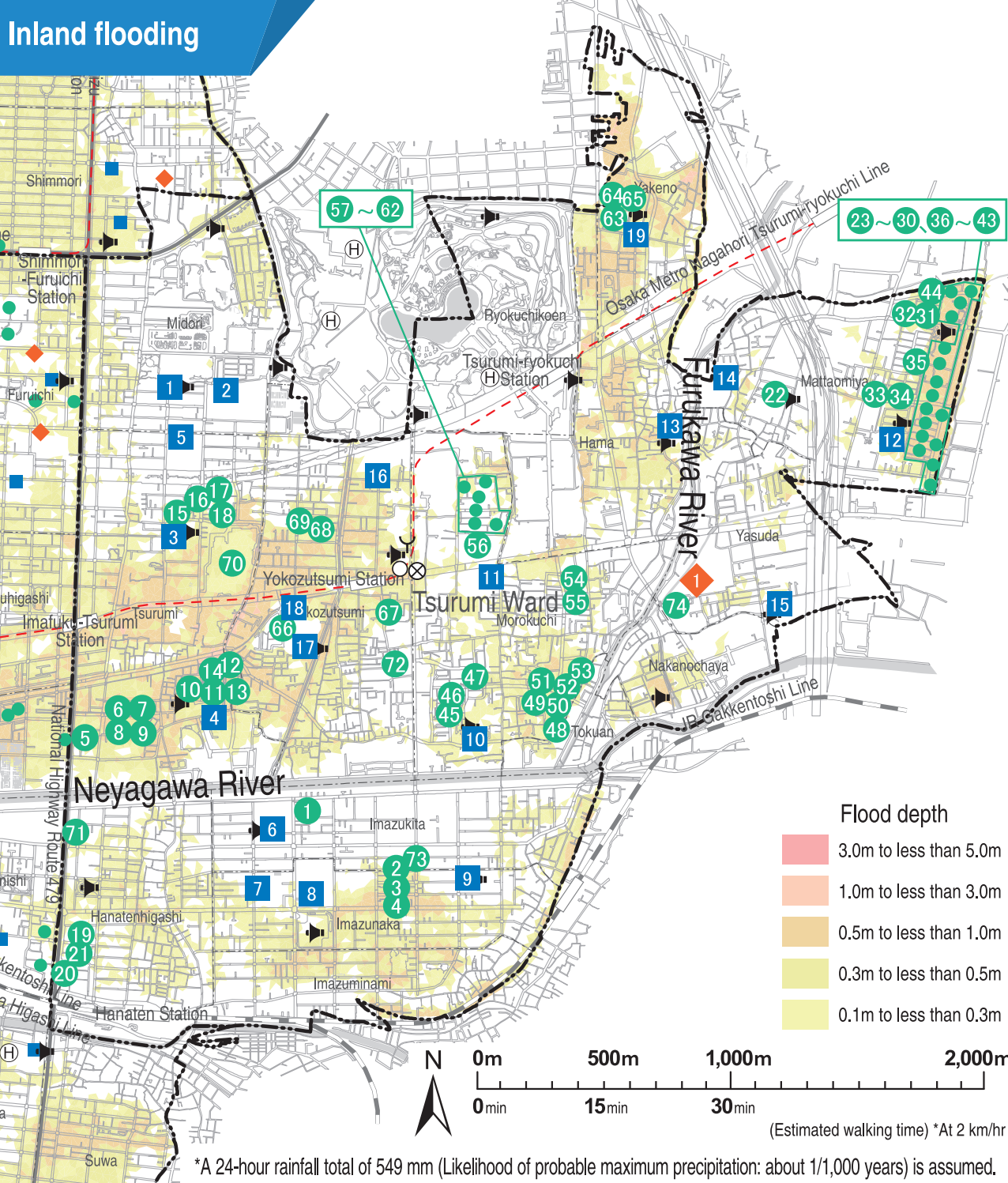
Evacuation Image

Safety measures for your house

Reduce the likelihood of your house being inundated and your home contents damaged.



Designated disaster evacuation site (Opens according to the disaster situation)		
1	Matta High School	1-5-49 Yasuda
Flood disaster evacuation bldg. (Accepts evacuees if an evacuation information is issued*)		
1	Municipal Imazu Kita Housing 1 Gokan	2-2 Imazukita
2	Municipal Imazu Naka Housing 3 Gokan	3-1 Imazunaka
3	Municipal Imazu Naka Housing 2 Gokan	3-3 Imazunaka
4	Municipal Imazu Naka Housing 1 Gokan	3-5 Imazunaka
5	Municipal Tsurumi Housing 8 Gokan	1-2 Tsurumi
6	Municipal Tsurumi Housing 3 Gokan	2-7 Tsurumi
7	Municipal Tsurumi Housing 4 Gokan	2-7 Tsurumi
8	Municipal Tsurumi Housing 1 Gokan	2-8 Tsurumi
9	Municipal Tsurumi Housing 2 Gokan	2-8 Tsurumi
10	Municipal Tsurumi Daini Housing 4 Gokan	2-16 Tsurumi
11	Municipal Tsurumi Daini Housing 3 Gokan	2-20 Tsurumi
12	Municipal Tsurumi Daini Housing 6 Gokan	2-21 Tsurumi
13	Municipal Tsurumi 2nd Housing 2 Gokan	2-21 Tsurumi
14	Municipal Tsurumi Daini Housing 5 Gokan	2-22 Tsurumi
15	Municipal Tsurumi Kita Housing 1 Gokan	5-6 Tsurumi
16	Municipal Tsurumi Kita Housing 2 Gokan	5-8 Tsurumi
17	Municipal Tsurumi Kita Housing 3 Gokan	5-9 Tsurumi
18	Municipal Tsurumi Kita Housing 5 Gokan	5-9 Tsurumi
19	Municipal Hanaten Higashi Housing 3 Gokan	2-5 Hanatenhigashi
20	Municipal Hanaten Higashi Housing 1 Gokan	3-2 Hanatenhigashi
21	Municipal Hanaten Higashi Housing 2 Gokan	3-2 Hanatenhigashi
22	Municipal Matta Omiya Nishi Housing 1 Gokan	1-10 Matta-omiya
23	Municipal Matta Omiya Daisan Housing 8 Gokan	3-2 Matta-omiya
24	Municipal Matta Omiya Daisan Housing 5 Gokan	3-3 Matta-omiya
25	Municipal Matta Omiya Daisan Housing 6 Gokan	3-3 Matta-omiya
26	Municipal Matta Omiya Daisan Housing 7 Gokan	3-3 Matta-omiya
27	Municipal Matta Omiya Daisan Housing 1 Gokan	3-8 Matta-omiya
28	Municipal Matta Omiya Daisan Housing 2 Gokan	3-8 Matta-omiya
29	Municipal Matta Omiya Daisan Housing 3 Gokan	3-8 Matta-omiya
30	Municipal Matta Omiya Daisan Housing 4 Gokan	3-8 Matta-omiya
31	Municipal Matta Omiya Daisan Housing 1 Gokan	4-30 Matta-omiya
32	Municipal Matta Omiya Daisan Housing 2 Gokan	4-30 Matta-omiya
33	Municipal Matta Omiya Daisan Housing 3 Gokan	4-30 Matta-omiya
34	Municipal Matta Omiya Daisan Housing 4 Gokan	4-30 Matta-omiya
35	Municipal Matta Omiya Daisan Housing 5 Gokan	4-30 Matta-omiya
36	Municipal Matta Omiya Daisan Housing 6 Gokan	4-30 Matta-omiya
37	Municipal Matta Omiya Daisan Housing 7 Gokan	4-30 Matta-omiya
38	Municipal Matta Omiya Daisan Housing 8 Gokan	4-30 Matta-omiya
39	Municipal Matta Omiya Daisan Housing 9 Gokan	4-30 Matta-omiya
40	Municipal Matta Omiya Daisan Housing 10 Gokan	4-30 Matta-omiya
41	Municipal Matta Omiya Daisan Housing 11 Gokan	4-30 Matta-omiya
42	Municipal Matta Omiya Daisan Housing 12 Gokan	4-30 Matta-omiya
43	Municipal Matta Omiya Daisan Housing 13 Gokan	4-30 Matta-omiya
44	Municipal Matta Omiya Daisan Housing 14 Gokan	4-30 Matta-omiya
45	Municipal Matta Omiya Daisan Housing 15 Gokan	4-30 Matta-omiya
46	Municipal Matta Omiya Daisan Housing 16 Gokan	4-30 Matta-omiya
47	Municipal Matta Omiya Daisan Housing 17 Gokan	4-30 Matta-omiya
48	Municipal Matta Omiya Daisan Housing 18 Gokan	4-30 Matta-omiya
49	Municipal Matta Omiya Daisan Housing 19 Gokan	4-30 Matta-omiya
50	Municipal Matta Omiya Daisan Housing 20 Gokan	4-30 Matta-omiya
51	Municipal Matta Omiya Daisan Housing 21 Gokan	4-30 Matta-omiya
52	Municipal Matta Omiya Daisan Housing 22 Gokan	4-30 Matta-omiya
53	Municipal Matta Omiya Daisan Housing 23 Gokan	4-30 Matta-omiya
54	Municipal Matta Omiya Daisan Housing 24 Gokan	4-30 Matta-omiya
55	Municipal Matta Omiya Daisan Housing 25 Gokan	4-30 Matta-omiya
56	Municipal Matta Omiya Daisan Housing 26 Gokan	4-30 Matta-omiya
57	Municipal Matta Omiya Daisan Housing 27 Gokan	4-30 Matta-omiya
58	Municipal Matta Omiya Daisan Housing 28 Gokan	4-30 Matta-omiya
59	Municipal Matta Omiya Daisan Housing 29 Gokan	4-30 Matta-omiya
60	Municipal Matta Omiya Daisan Housing 30 Gokan	4-30 Matta-omiya
61	Municipal Matta Omiya Daisan Housing 31 Gokan	4-30 Matta-omiya
62	Municipal Matta Omiya Daisan Housing 32 Gokan	4-30 Matta-omiya
63	Municipal Matta Omiya Daisan Housing 33 Gokan	4-30 Matta-omiya
64	Municipal Matta Omiya Daisan Housing 34 Gokan	4-30 Matta-omiya
65	Municipal Matta Omiya Daisan Housing 35 Gokan	4-30 Matta-omiya
66	Municipal Matta Omiya Daisan Housing 36 Gokan	4-30 Matta-omiya
67	Municipal Matta Omiya Daisan Housing 37 Gokan	4-30 Matta-omiya
68	Municipal Matta Omiya Daisan Housing 38 Gokan	4-30 Matta-omiya
69	Municipal Matta Omiya Daisan Housing 39 Gokan	4-30 Matta-omiya
70	Municipal Matta Omiya Daisan Housing 40 Gokan	4-30 Matta-omiya
71	Municipal Matta Omiya Daisan Housing 41 Gokan	4-30 Matta-omiya
72	Municipal Matta Omiya Daisan Housing 42 Gokan	4-30 Matta-omiya
73	Municipal Matta Omiya Daisan Housing 43 Gokan	4-30 Matta-omiya
74	Municipal Matta Omiya Daisan Housing 44 Gokan	4-30 Matta-omiya
75	Municipal Matta Omiya Daisan Housing 45 Gokan	4-30 Matta-omiya
76	Municipal Matta Omiya Daisan Housing 46 Gokan	4-30 Matta-omiya
77	Municipal Matta Omiya Daisan Housing 47 Gokan	4-30 Matta-omiya
78	Municipal Matta Omiya Daisan Housing 48 Gokan	4-30 Matta-omiya
79	Municipal Matta Omiya Daisan Housing 49 Gokan	4-30 Matta-omiya
80	Municipal Matta Omiya Daisan Housing 50 Gokan	4-30 Matta-omiya
81	Municipal Matta Omiya Daisan Housing 51 Gokan	4-30 Matta-omiya
82	Municipal Matta Omiya Daisan Housing 52 Gokan	4-30 Matta-omiya
83	Municipal Matta Omiya Daisan Housing 53 Gokan	4-30 Matta-omiya
84	Municipal Matta Omiya Daisan Housing 54 Gokan	4-30 Matta-omiya
85	Municipal Matta Omiya Daisan Housing 55 Gokan	4-30 Matta-omiya
86	Municipal Matta Omiya Daisan Housing 56 Gokan	4-30 Matta-omiya
87	Municipal Matta Omiya Daisan Housing 57 Gokan	4-30 Matta-omiya
88	Municipal Matta Omiya Daisan Housing 58 Gokan	4-30 Matta-omiya
89	Municipal Matta Omiya Daisan Housing 59 Gokan	4-30 Matta-omiya
90	Municipal Matta Omiya Daisan Housing 60 Gokan	4-30 Matta-omiya
91	Municipal Matta Omiya Daisan Housing 61 Gokan	4-30 Matta-omiya
92	Municipal Matta Omiya Daisan Housing 62 Gokan	4-30 Matta-omiya
93	Municipal Matta Omiya Daisan Housing 63 Gokan	4-30 Matta-omiya
94	Municipal Matta Omiya Daisan Housing 64 Gokan	4-30 Matta-omiya
95	Municipal Matta Omiya Daisan Housing 65 Gokan	4-30 Matta-omiya
96	Municipal Matta Omiya Daisan Housing 66 Gokan	4-30 Matta-omiya
97	Municipal Matta Omiya Daisan Housing 67 Gokan	4-30 Matta-omiya
98	Municipal Matta Omiya Daisan Housing 68 Gokan	4-30 Matta-omiya
99	Municipal Matta Omiya Daisan Housing 69 Gokan	4-30 Matta-omiya
100	Municipal Matta Omiya Daisan Housing 70 Gokan	4-30 Matta-omiya



Map information site, MapNavi Osaka

Hazard maps and disaster prevention facilities can be found online.

*This map shows hazard areas for flooding (river flooding, high tide, inland flooding, tsunami). It does not list designated safety areas and temporary safety areas. Please use this hazard map to find safe evacuation areas in the event of flooding.

*Flood-prone areas have underground shopping and facilities for the infirm. Please see the Regional Disaster Management Plan for more information. (The Regional Disaster Management Plan is available at your closest ward office, City Hall, and on Osaka City's website.)

Regular precautions and preparations

Have items ready that you can bring with you when you evacuate (emergency kit)

Items for emergency grab-and-go bag (backpack, etc.)

Drinking water

Emergency food

Valuables

Medical supplies

Other

- Whistle
- Thick gloves (work gloves)
- Clothes (outerwear, underwear, socks)
- Portable heat patches
- Plastic bag and wrap
- Toiletries, hygiene products, masks
- Shoes with durable soles
- Dry cell and mobile batteries
- Portable toilet
- Tissues and wet wipes
- Flashlight and lantern
- Radio
- Helmet and protective hood
- Rain and cold protection gear
- Towel and handkerchief
- Utility knife and can opener
- Disposable ware (chopsticks, paper plates)
- Sanitary napkins and toilet paper

Aim for 15 kg for adult male, 10 kg for adult female

Designated disaster evacuation site & flood disaster evacuation bldg. (The former opens according to the disaster situation) (The latter accepts evacuees if an evacuation information is issued*)		
1	Midori Elementary School	2-4-45 Midori
2	Tsurumi Commercial High School	2-10-9 Midori
3	Tsurumi Elementary School	4-14-10 Tsurumi
4	Tsurumi Minami Elementary School	2-17-22 Tsurumi
5	Midori Junior High School	6-6-11 Tsurumi
6	Enomoto Elementary School	1-5-35 Imazukita
7	Imazu Junior High School	1-3-55 Imazunaka
8	Han Ai High School	2-1-52 Imazunaka
9	Imazu Elementary School	4-1-48 Imazunaka
10	Matta Minami Elementary School	1-3-71 Morokuchi
11	Matta Junior High School	3-4-44 Morokuchi
12	Matta Higashi Elementary School	3-7-61 Matta-omiya
13	Matta Kita Elementary School	3-8-66 Hama
14	Matta Kita Junior High School	1-1-31 Matta-omiya
15	Matta Elementary School	2-1-8 Yasuda
16	Matta Nishi Elementary School	5-13-61 Yokozutsumi
17	Yokozutsumi Elementary School	1-11-83 Yokozutsumi
18	Yokozutsumi Junior High School	1-11-27 Yokozutsumi
19	Yakeno Elementary School	1-3-44 Yakeno

*As of March 2021.
*Please see the website for an updated list of designated hazard areas.
*For the evacuation time limit, please see the "List of Registered Flood Disaster Evacuation Buildings" on Osaka City's website, the Osaka City Map Information Site, or your local noticeboard.

Legend

- Designated disaster evacuation site
- Flood disaster evacuation bldg.
- Designated disaster evacuation site & flood disaster evacuation bldg.
- Ward Office / Ward Health and Welfare Center
- Police station
- Fire station
- Disaster relief heliport
- Outdoor emergency speaker
- House collapse hazard zone
- JR
- Subway
- Train station
- National route
- Ward border
- Town border

Have your stockpile ready

You may not be able to shop normally for several days after a natural disaster. Have peace of mind by adequately stocking basic necessities for yourself and your family on a day-to-day basis.

Daily stocking

Stock up on food you often eat with long expiry dates; buy more when you consume them (rolling stock method)

Food for at least 7 days

Alpha rice that can be eaten by adding water, canned food, hardtack, instant and retort pouch food, dietary supplements, snacks, condiments, soup, etc.

Drinking water for at least 7 days

3 liters a day per adult

Toilet supplies

Temporary toilet, waste storage containers, toilet bags, toilet paper

Fuel

Portable gas stove, gas canisters, solid fuel

Blanket, sleeping bag

Plastic wrap for food

Plastic tank

Rolling stock method

An economical method in which food is consumed before they expire.

Necessities for applicable families and households

Infants

Pregnant women

Elderly

People with illnesses

Pets

Other