

◇ 各別 世帯の年間収入階級別世帯数及び区内構成比率

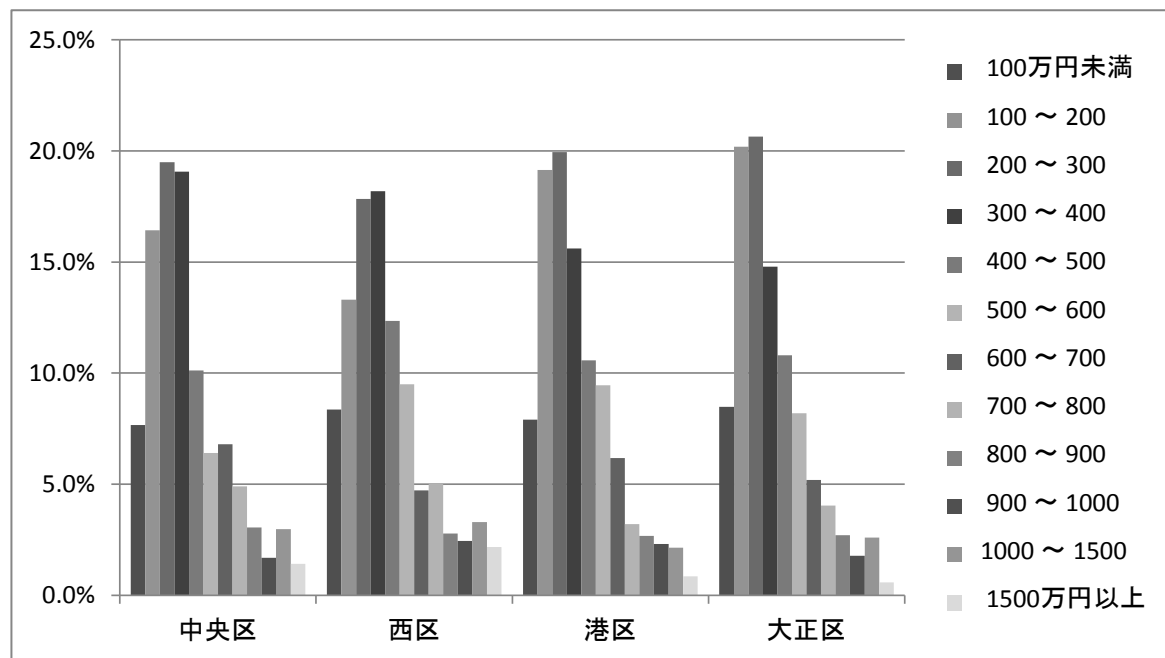
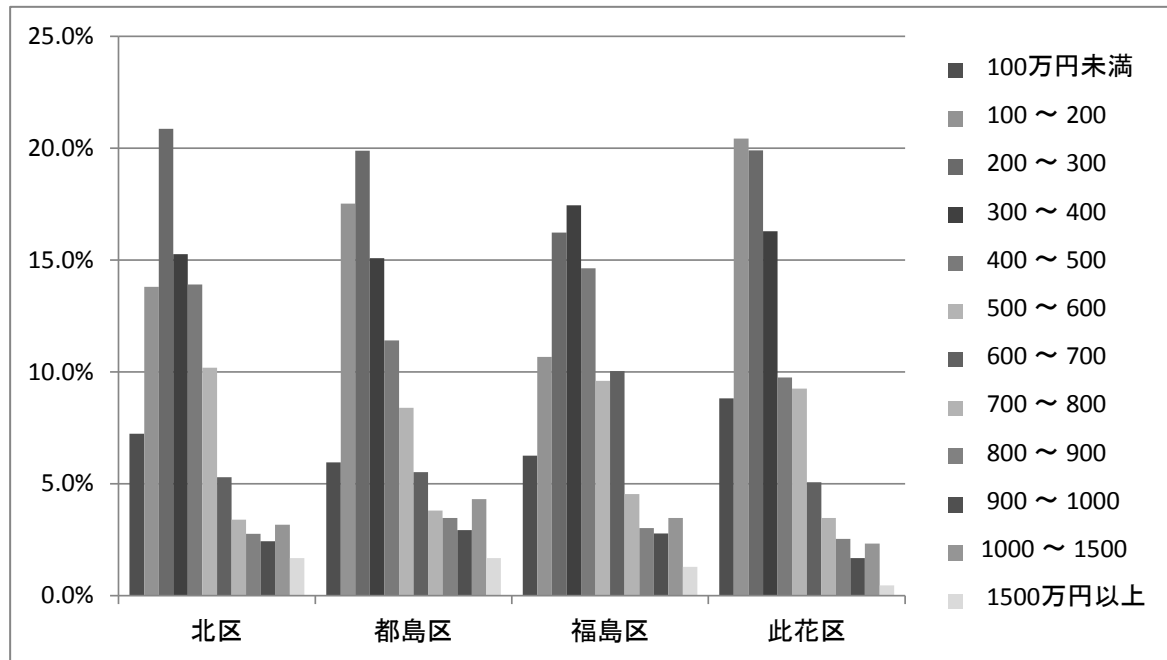
(単位:世帯数)

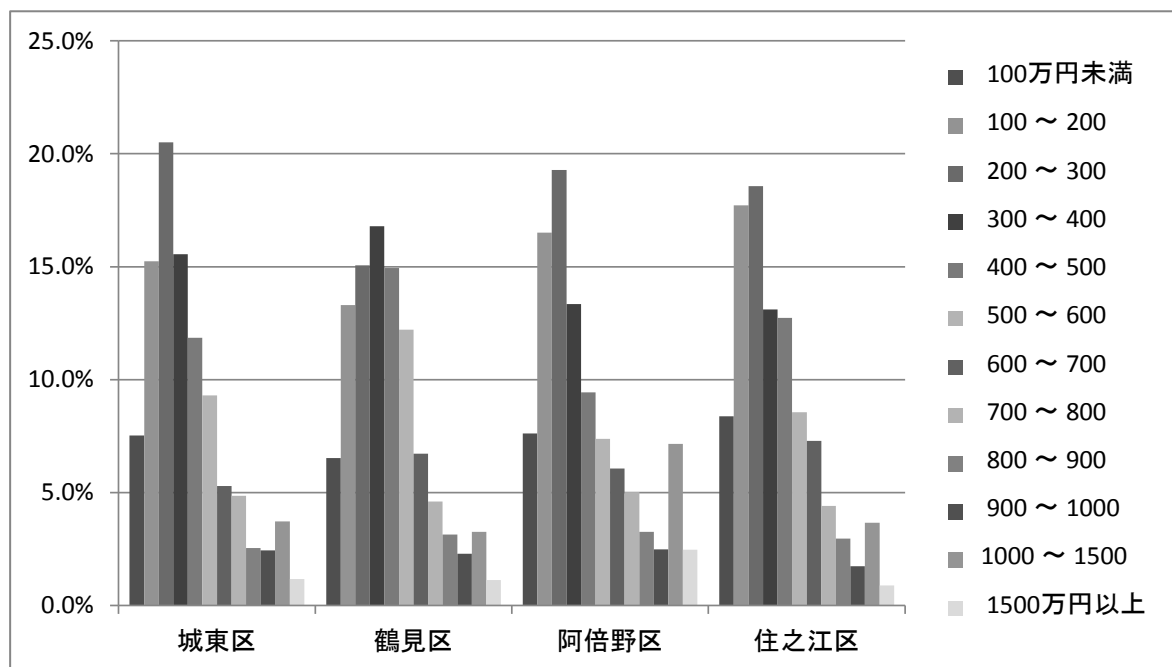
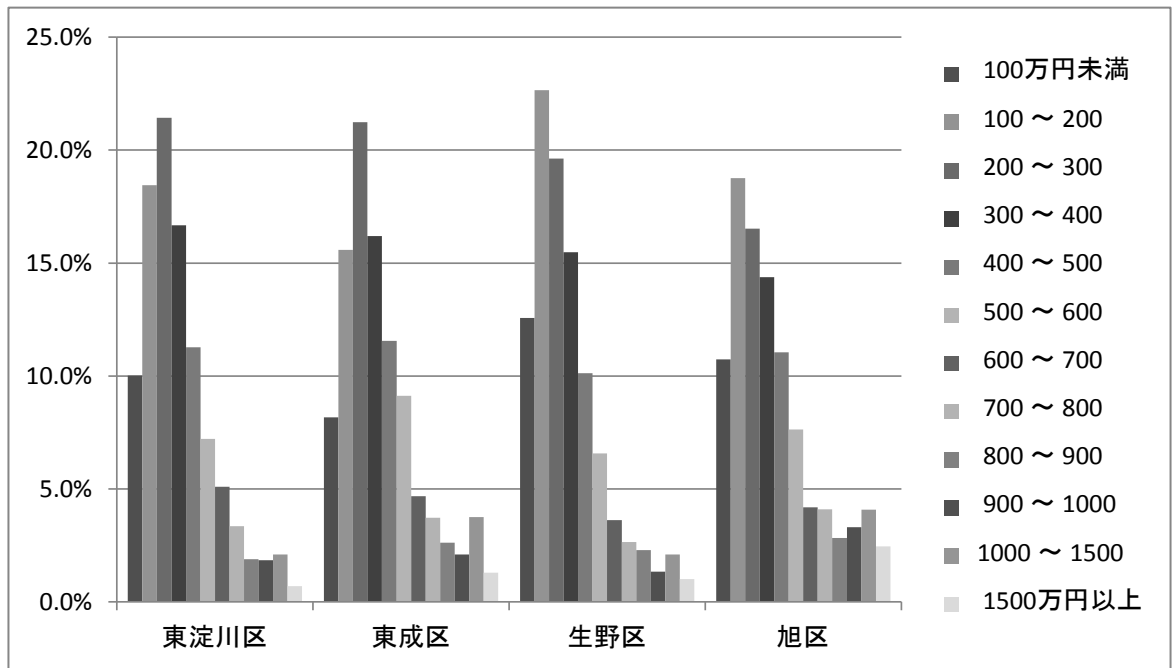
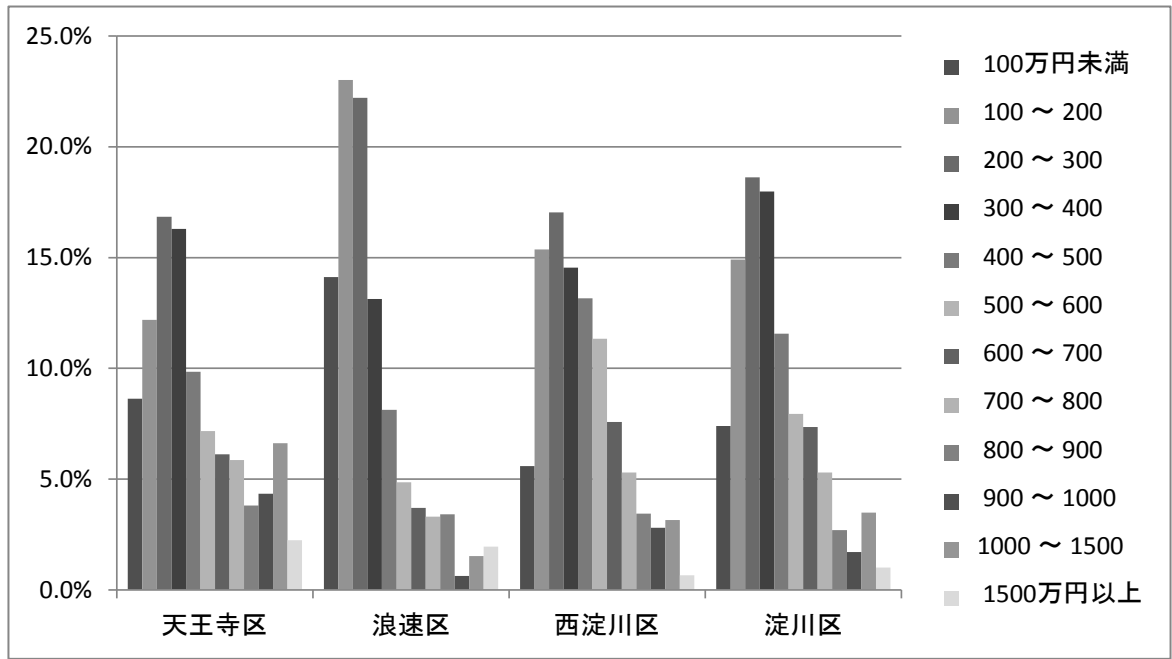
	世帯数																							
	北区	都島区	福島区	此花区	中央区	西区	港区	大正区	天王寺区	浪速区	西淀川区	淀川区	東淀川区	東成区	生野区	旭区	城東区	鶴見区	阿倍野区	住之江区	住吉区	東住吉区	平野区	西成区
100万円未満	3,280	2,710	1,890	2,470	3,320	3,150	2,840	2,480	2,650	4,270	1,930	5,740	8,570	2,660	7,080	4,190	5,280	2,680	3,370	4,350	5,500	4,960	8,320	11,970
100～200	6,260	7,970	3,220	5,720	7,110	5,010	6,880	5,910	3,740	6,960	5,310	11,570	15,770	5,070	12,770	7,320	10,700	5,460	7,300	9,200	14,660	11,360	18,220	29,050
200～300	9,460	9,040	4,900	5,570	8,440	6,720	7,170	6,040	5,170	6,720	5,890	14,450	18,320	6,910	11,060	6,450	14,390	6,180	8,530	9,640	11,860	10,590	18,010	11,500
300～400	6,920	6,860	5,270	4,560	8,250	6,850	5,610	4,330	5,000	3,970	5,030	13,960	14,250	5,270	8,720	5,610	10,920	6,890	5,900	6,800	11,140	8,400	10,280	6,930
400～500	6,310	5,190	4,420	2,730	4,380	4,650	3,800	3,160	3,020	2,460	4,550	8,980	9,640	3,760	5,700	4,310	8,320	6,130	4,170	6,610	7,940	6,230	7,810	4,310
500～600	4,620	3,820	2,900	2,590	2,770	3,580	3,400	2,400	2,200	1,470	3,920	6,170	6,170	2,970	3,700	2,980	6,530	5,010	3,260	4,440	4,950	4,010	6,300	3,210
600～700	2,400	2,510	3,030	1,420	2,940	1,780	2,220	1,520	1,880	1,120	2,620	5,700	4,360	1,520	2,040	1,630	3,710	2,760	2,680	3,780	2,910	2,550	3,270	1,510
700～800	1,540	1,730	1,370	970	2,120	1,890	1,150	1,180	1,800	1,000	1,830	4,110	2,860	1,210	1,490	1,600	3,410	1,890	2,220	2,290	2,500	1,770	3,770	1,320
800～900	1,250	1,580	910	710	1,320	1,050	960	790	1,170	1,030	1,190	2,090	1,610	850	1,290	1,100	1,780	1,290	1,440	1,540	1,770	1,450	1,700	1,010
900～1000	1,100	1,330	840	470	730	920	830	520	1,330	190	970	1,330	1,570	680	750	1,290	1,710	940	1,100	900	1,430	1,260	1,550	680
1000～1500	1,440	1,960	1,050	650	1,290	1,240	770	760	2,030	460	1,090	2,710	1,790	1,220	1,180	1,590	2,610	1,340	3,160	1,900	1,870	2,010	1,650	490
1500万円以上	760	760	390	130	610	820	310	170	690	590	230	780	590	420	570	960	820	460	1,090	460	700	780	790	290
計	45,340	45,460	30,190	27,990	43,280	37,660	35,940	29,260	30,680	30,240	34,560	77,590	85,500	32,540	56,350	39,030	70,180	41,030	44,220	51,910	67,230	55,370	81,670	72,270

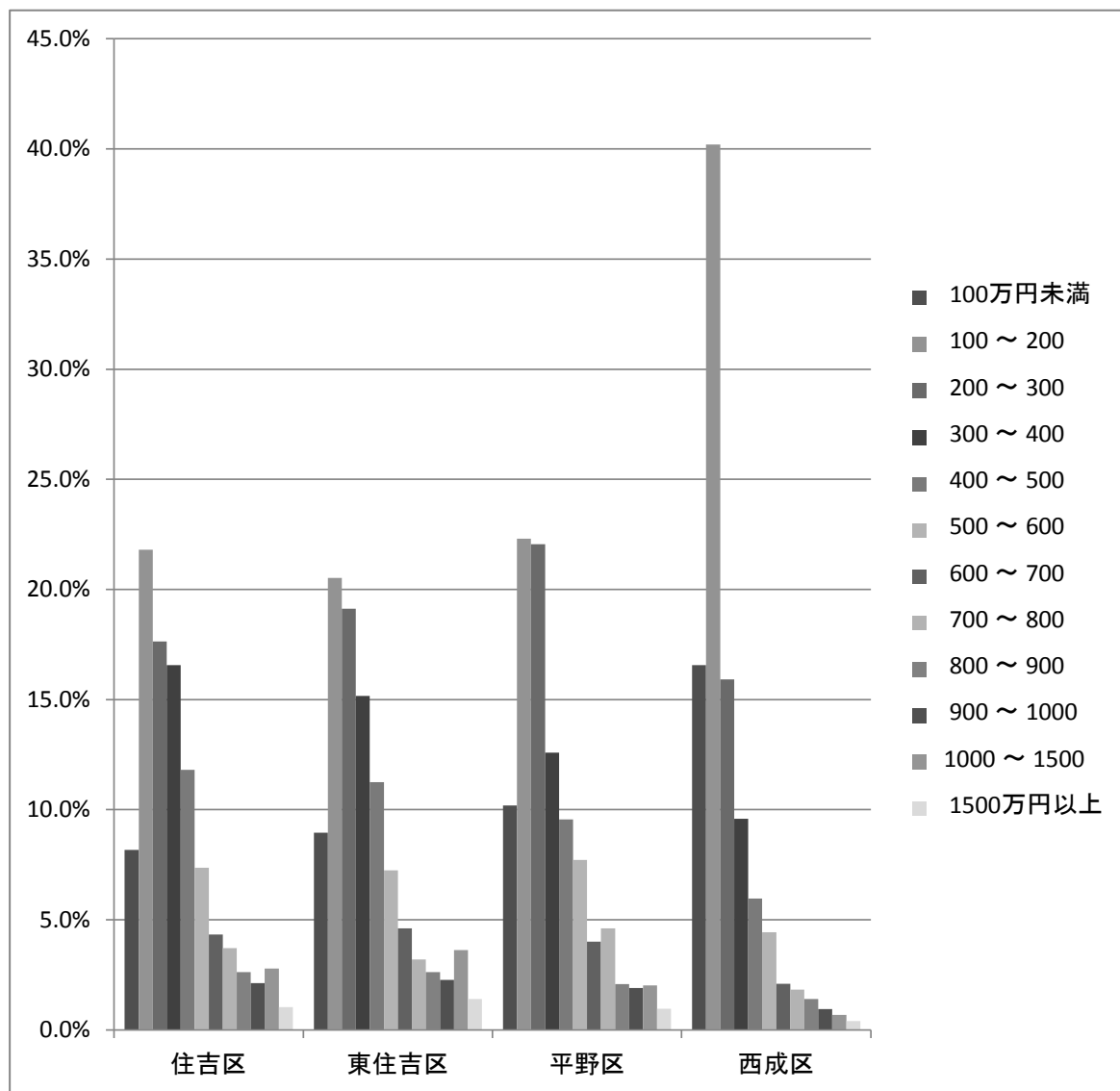
	区内構成比率																							
	北区	都島区	福島区	此花区	中央区	西区	港区	大正区	天王寺区	浪速区	西淀川区	淀川区	東淀川区	東成区	生野区	旭区	城東区	鶴見区	阿倍野区	住之江区	住吉区	東住吉区	平野区	西成区
100万円未満	7.2%	6.0%	6.3%	8.8%	7.7%	8.4%	7.9%	8.5%	8.6%	14.1%	5.6%	7.4%	10.0%	8.2%	12.6%	10.7%	7.5%	6.5%	7.6%	8.4%	8.2%	9.0%	10.2%	16.6%
100～200	13.8%	17.5%	10.7%	20.4%	16.4%	13.3%	19.1%	20.2%	12.2%	23.0%	15.4%	14.9%	18.4%	15.6%	22.7%	18.8%	15.2%	13.3%	16.5%	17.7%	21.8%	20.5%	22.3%	40.2%
200～300	20.9%	19.9%	16.2%	19.9%	19.5%	17.8%	19.9%	20.6%	16.9%	22.2%	17.0%	18.6%	21.4%	21.2%	19.6%	16.5%	20.5%	15.1%	19.3%	18.6%	17.6%	19.1%	22.1%	15.9%
300～400	15.3%	15.1%	17.5%	16.3%	19.1%	18.2%	15.6%	14.8%	16.3%	13.1%	14.6%	18.0%	16.7%	16.2%	15.5%	14.4%	15.6%	16.8%	13.3%	13.1%	16.6%	15.2%	12.6%	9.6%
400～500	13.9%	11.4%	14.6%	9.8%	10.1%	12.3%	10.6%	10.8%	9.8%	8.1%	13.2%	11.6%	11.3%	11.6%	10.1%	11.0%	11.9%	14.9%	9.4%	12.7%	11.8%	11.3%	9.6%	6.0%
500～600	10.2%	8.4%	9.6%	9.3%	6.4%	9.5%	9.5%	8.2%	7.2%	4.9%	11.3%	8.0%	7.2%	9.1%	6.6%	7.6%	9.3%	12.2%	7.4%	8.6%	7.4%	7.2%	7.7%	4.4%
600～700	5.3%	5.5%	10.0%	5.1%	6.8%	4.7%	6.2%	5.2%	6.1%	3.7%	7.6%	7.3%	5.1%	4.7%	3.6%	4.2%	5.3%	6.7%	6.1%	7.3%	4.3%	4.6%	4.0%	2.1%
700～800	3.4%	3.8%	4.5%	3.5%	4.9%	5.0%	3.2%	4.0%	5.9%	3.3%	5.3%	5.3%	3.3%	3.7%	2.6%	4.1%	4.9%	4.6%	5.0%	4.4%	3.7%	3.2%	4.6%	1.8%
800～900	2.8%	3.5%	3.0%	2.5%	3.0%	2.8%	2.7%	2.7%	3.8%	3.4%	3.4%	2.7%	1.9%	2.6%	2.3%	2.8%	2.5%	3.1%	3.3%	3.0%	2.6%	2.6%	2.1%	1.4%
900～1000	2.4%	2.9%	2.8%	1.7%	1.7%	2.4%	2.3%	1.8%	4.3%	0.6%	2.8%	1.7%	1.8%	2.1%	1.3%	3.3%	2.4%	2.3%	2.5%	1.7%	2.1%	2.3%	1.9%	0.9%
1000～1500	3.2%	4.3%	3.5%	2.3%	3.0%	3.3%	2.1%	2.6%	6.6%	1.5%	3.2%	3.5%	2.1%	3.7%	2.1%	4.1%	3.7%	3.3%	7.1%	3.7%	2.8%	3.6%	2.0%	0.7%
1500万円以上	1.7%	1.7%	1.3%	0.5%	1.4%	2.2%	0.9%	0.6%	2.2%	2.0%	0.7%	1.0%	0.7%	1.3%	1.0%	2.5%	1.2%	1.1%	2.5%	0.9%	1.0%	1.4%	1.0%	0.4%
計	100.0%	100.0%	100.0%	100.0%	100.0%	100.0%	100.0%	100.0%	100.0%	100.0%	100.0%	100.0%	100.0%	100.0%	100.0%	100.0%	100.0%	100.0%	100.0%	100.0%	100.0%	100.0%	100.0%	100.0%

【出典:総務省『平成20年住宅・土地統計調査』】

◇ 各区別 世帯の年間収入階級別世帯数 区内構成比率 (グラフ)







【出典：総務省『平成20年住宅・土地統計調査』】