

04 Comprehensive water quality testing to deliver safe drinking water

Watching the water
- Water quality inspection -

The safety of water is most important.

To ensure the safety of tap water for customers, the Water Examination Laboratory formulates the Osaka Municipal Water Quality Management Plan, based on which it regularly examines water quality from all aspects. This Plan details how the Bureau tests at various locations more than 200 different water quality items at every stage, from the water sources of Lake Biwa and the Yodo River to customer faucets. The Bureau welcomes suggestions and opinions from customers concerning water quality issues and reviews its operations annually. Furthermore, in order to ensure the safety of tap water in the future, the Bureau collects the latest scientific information and strives to develop and research various inspections and effective methods to eliminate contaminants.

Water supply GLP accreditation

Our Water Examination Laboratory became the first in Japan to receive Water Supply Good Laboratory Practice (GLP) accreditation. The Bureau makes every effort to provide customers with reliable results of water quality examinations by ensuring the accuracy of quality inspections and examinations. (GLP accreditation received on December 26, 2005)



Water quality examinations

The Bureau ensures water quality by testing more than 200 different items, such as agricultural chemicals, endocrine disruptors, cyanogen, bromate or other ions, and heavy metals, using cutting-edge analytical equipment and advanced technology.

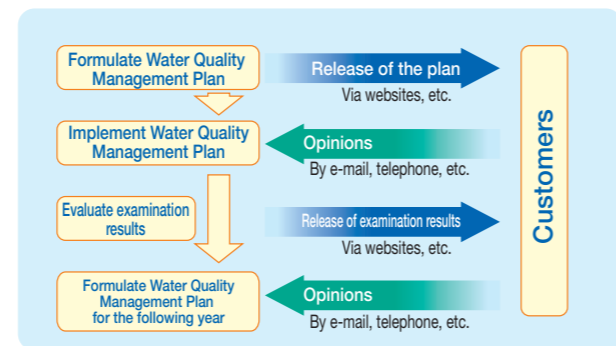


Osaka Municipal Waterworks Bureau Water Quality Management Plan

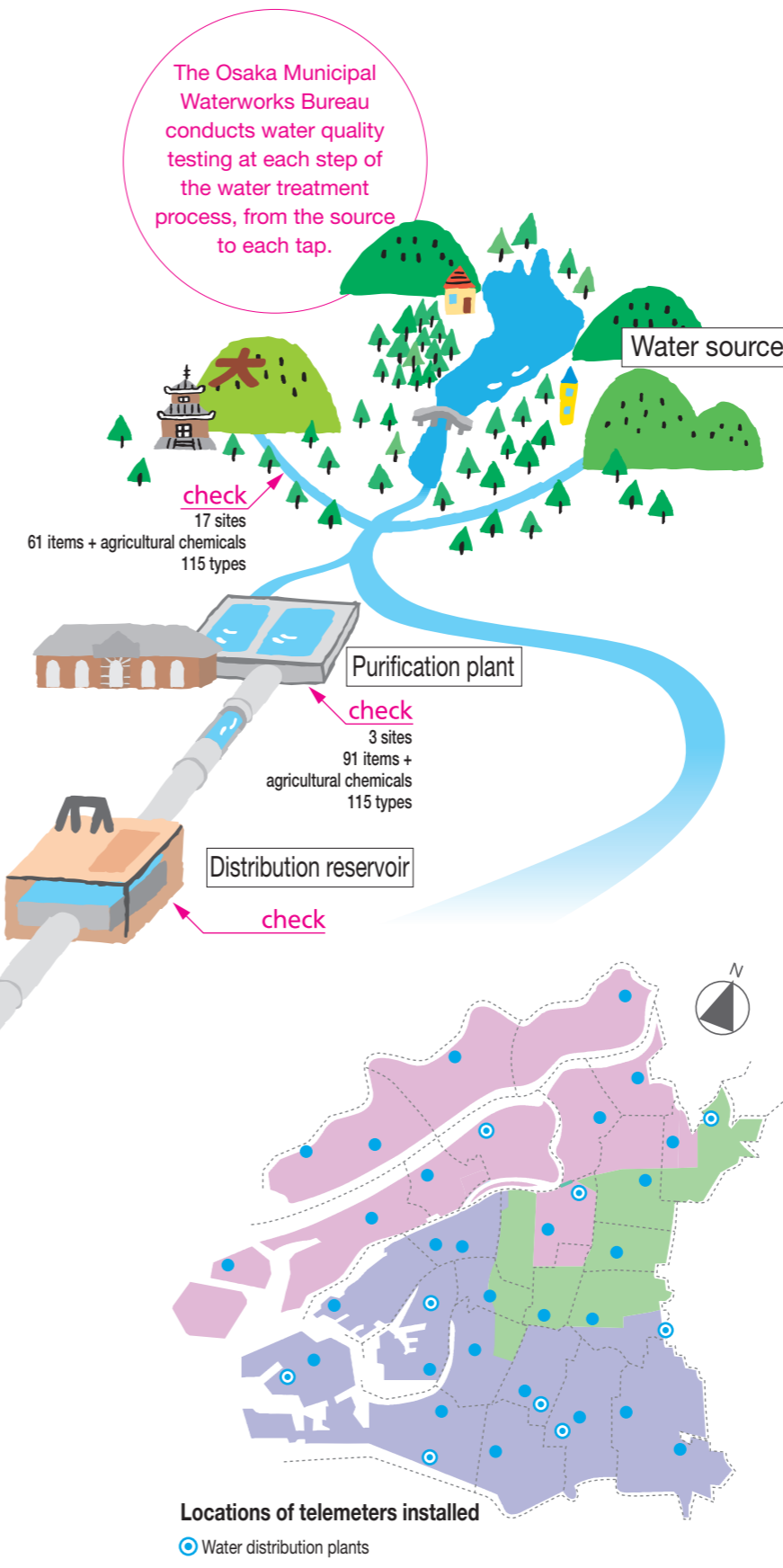
Structure of the Water Quality Management Plan



Publication of a Water Quality Management Plan



check
Monitoring municipal water taps on 56 items at 21 sites, and on six items at 37 additional locations, including service reservoirs, 24 hours a day with telemeters.



Source water quality control

The water quality of the Yodo River, Osaka's water source, has been greatly improved since the 1990s as a result of the tightening of regulations on discharge from factories and the development of sewers. Meanwhile, Lake Biwa's level of nitrogen, the main nutrient for plankton, has remained almost the same.

To protect the quality of our precious water source, each one of us should make a personal effort to keep the water clean while further advancing water quality conservation initiatives. The Water Quality Testing Laboratory works in cooperation with other waterworks that rely on Lake Biwa and the Yodo River to monitor, examine, and research the quality of water.

Water quality control at purification plants

At the purification plants, the Bureau checks that water is produced through appropriate purification processes and that the treated water to be sent to the city satisfies the criteria for drinking water.

If source water is affected by heavy rains or contaminated by an accident, etc., the Bureau conducts extraordinary water quality examination and promptly takes responsive action.

Water quality testing sites in Osaka City

Water quality is thoroughly tested once a month according to the water quality criteria and items on water taps at 21 sites in the city to ensure the safety and reliability of drinking water. Furthermore, 37 telemeters installed throughout the city constantly monitor the color, turbidity, and residual chlorine concentration of water 24 hours a day.