

03 Prepared for any situation at any time to continue providing steady water supply

Water distribution



Water distribution plants and distribution pipes

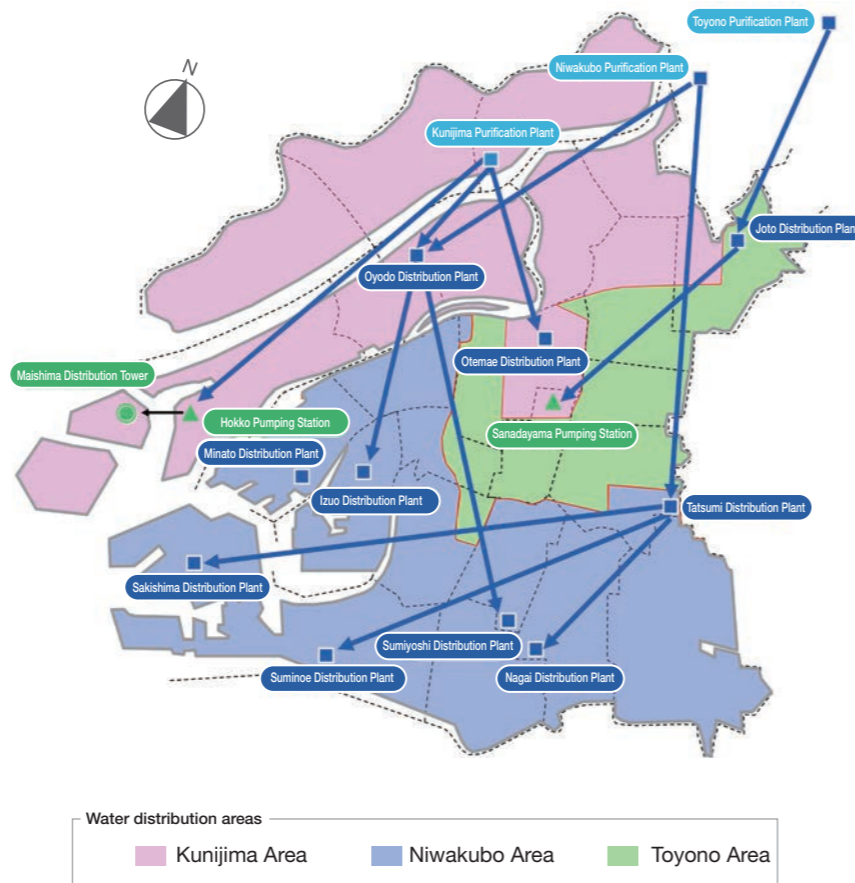
Water treated in purification plants is sent to distribution reservoirs at purification plants or distribution plants located around the city. Storing water in the distribution reservoirs at these plants enables a steady supply of water even at peak usage times in the morning and evening. The water in the distribution reservoirs is delivered through a network of distribution pipes across the city and finally to each faucet of customers.

Maintenance of distribution pipes
Some of the city's distribution pipes, which are approximately 5,200 km in total length, are aged. In order to prevent leaks and ensure a stable supply of water as much as possible even in an emergency, such as an accident or disaster, and maintain the highly reliable lifeline, the Bureau continuously replaces aged pipes with seismic ones, improves its network of distribution pipes, and upgrades the distribution control system.

Around-the-clock preparedness

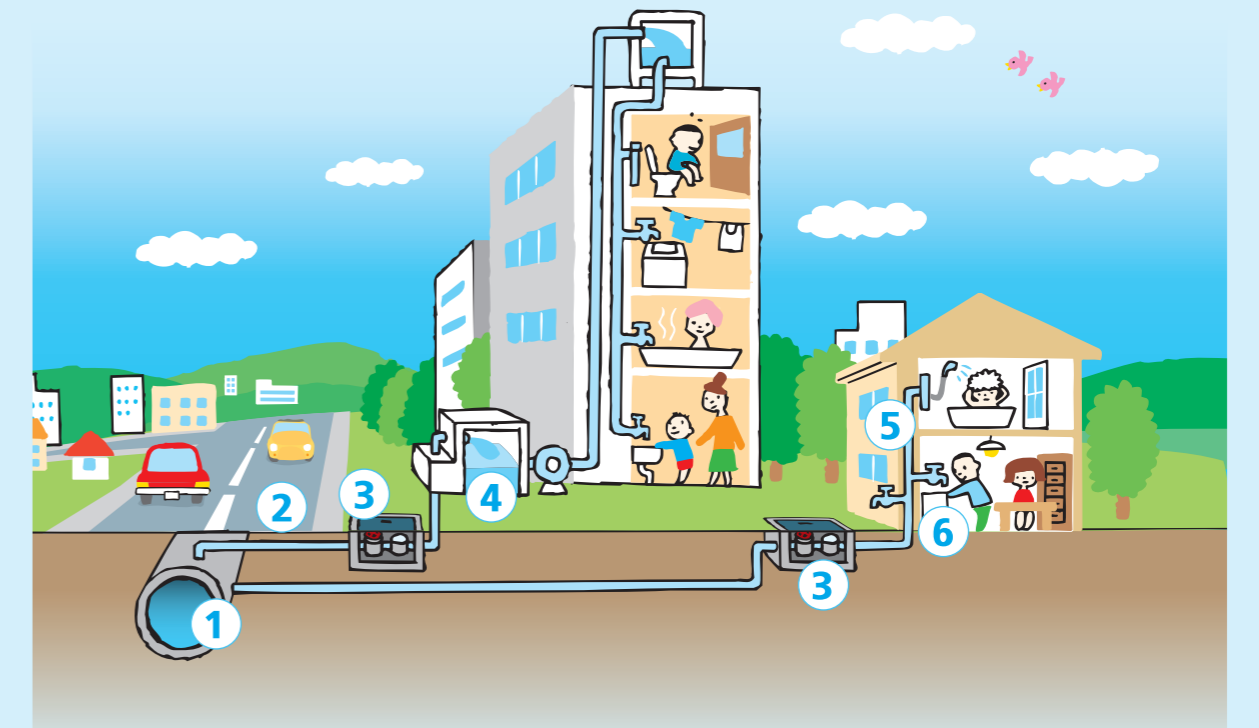
The Bureau collects water flow and water pressure data for 24 consecutive hours from telemeters installed in distribution pipes in all regions of the city in order to control the distribution of water meticulously. The waterworks centers prepare for emergencies, such as pipe leakages, around the clock and implement immediate repair works in case of emergency. Furthermore, the Bureau strives to prevent accidents by patrolling and inspecting the facilities around the city.

Water distribution areas



How water arrives at your tap

- 1 Branching off from distribution pipes**
Tasty water flows past the doorstep of every customer through the network of distribution pipes spreading beneath roads. Service pipes branch off from the distribution pipes and allow the transfer of water to each tap. This branch point is the first step in the process.
- 2 Embedded service pipes**
Service pipes connect the distribution pipes to water meters. Service pipes are the property of each customer even though they are buried under public roads. The Bureau provides various maintenance services, such as repair of pipes causing water leakage on roads and replacement of obsolete pipes.
- 3 Accurate water meters**
Our waterworks business is funded by revenue collected from water fees paid by our customers. And a water meter is an instrument to measure the volume of water consumed by each customer. The greatest priority of the instrument is on its accuracy. Each meter is subjected to rigorous tests before it is installed and is replaced every eight years so as to ensure accuracy sufficient to gain trust of the customers.



- 4 Receiving tanks and direct booster pumps**
Tap water is pressurized and supplied to customers. For high-rise condominiums and other tall buildings, water is delivered to customers by employing several methods to maintain supply water pressure, such as sending water stored in tanks using pumps, or sending water directly to customer faucets with booster pumps installed instead of water tanks.
- 5 Internal service pipes at each home**
Water service pipes in a building are usually invisible. But if a leak or other problem arises, it will immediately make the life of the residents inconvenient. Only properly licensed engineers are permitted to work on water service installations that feed drinking water. So contact the waterworks companies designated by Osaka City for repair or installation work. It is recommended that you check the costs for work with several waterworks companies in advance.
- 6 To your taps as drinking water**
Water has finally reached the tap, from which you can use the tasty water we serve you with confidence. You can trust and drink it with no worries. The Bureau is proud of the excellent taste of the water as well as its safety and reliability.