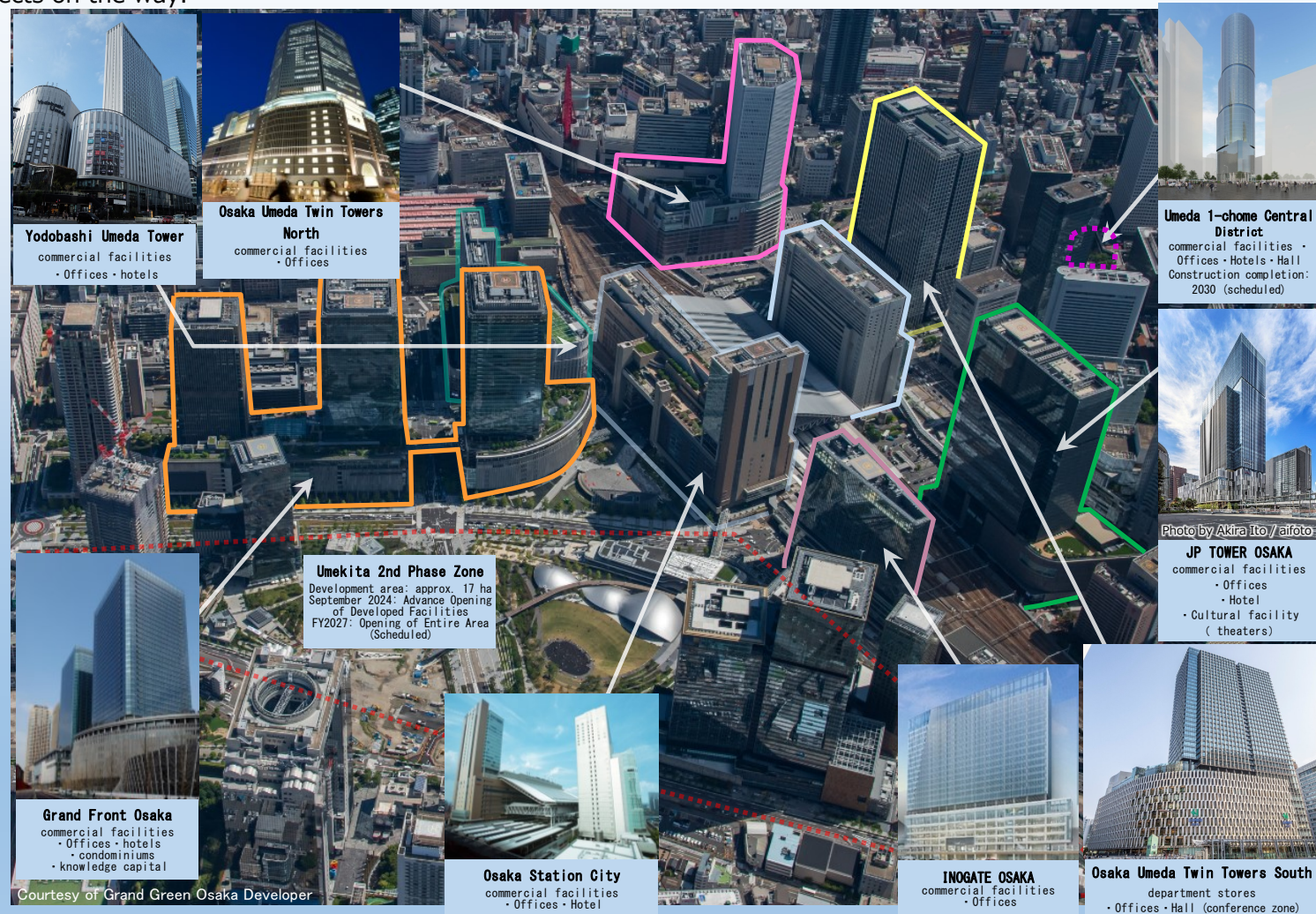


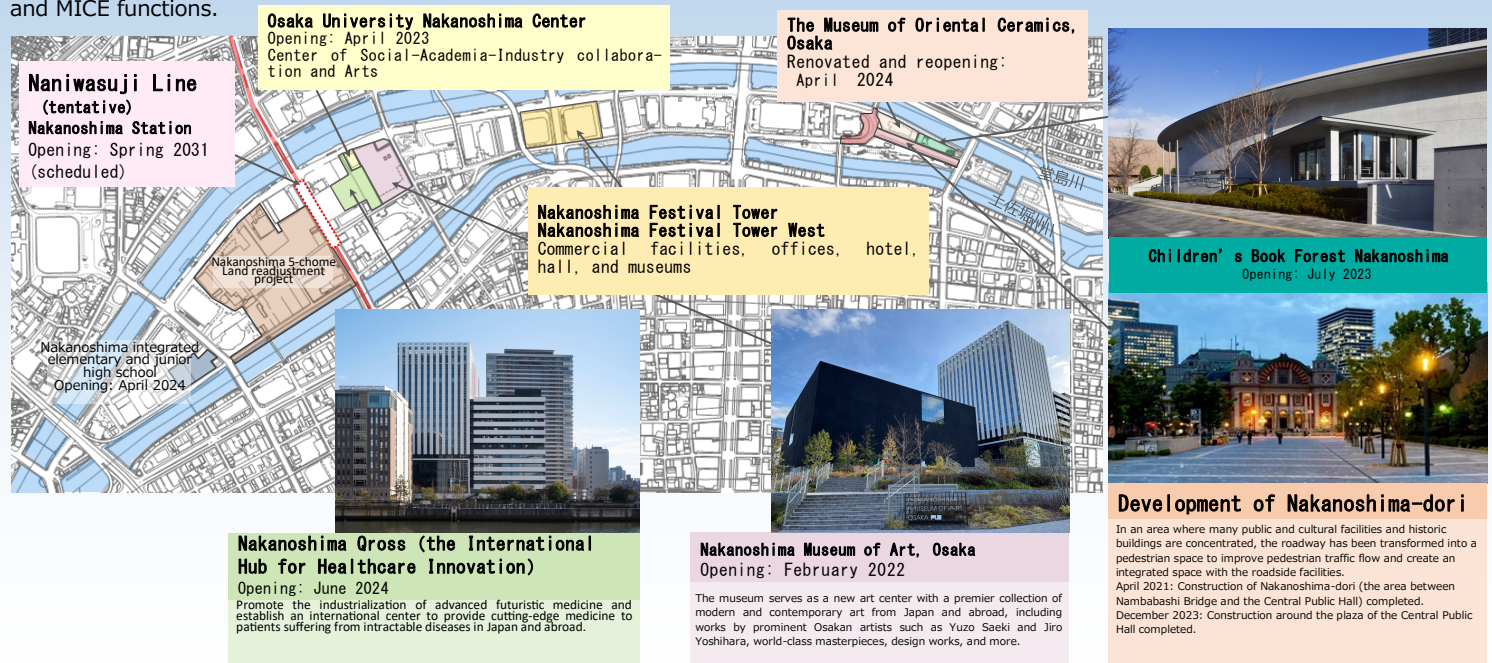
Osaka Station District

The Osaka Station District is the largest terminal in western Japan, with approximately 2.5 million people passing through every day, providing excellent access to major cities in the Kansai region. The district boasts a high level of urban infrastructure, attracting a large number of businesses, with a variety of private development projects on the way.



Nakanoshima District

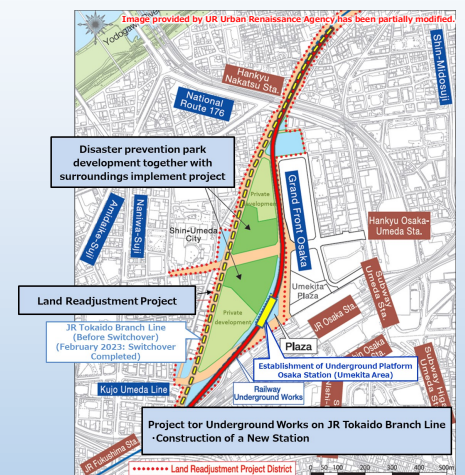
Nakanoshima, a symbolic island of the Aqua Metropolis Osaka, is located between the Dojimagawa River and the Tosaborigawa River. Since the distant past, Nakanoshima has always been a center for economy, culture, and government. It continues to attract the central functions of businesses, while also taking on the role of conveying artistic and cultural information. Taking advantage of the characteristics of the island, we are working to create a global business, cultural, academic, and exchange center through projects such as the development of the Nakanoshima Museum of Art and the International Hub for Healthcare Innovation, in addition to the existing concentration of business, cultural, and MICE functions.



Osaka Station District (Umekita 2nd Phase Zone)

In the Umekita 2nd Phase area, urban development projects are underway with the goal of creating a base that will not only promote the development of Osaka and the Kansai region, but also contribute to strengthening Japan's international competitiveness. We are working to develop the infrastructure to realize the core functions of the area, which will generate world-leading innovations in a vast green environment.

Image of Umekita 2nd Phase Development (Grand Green Osaka)



【Private sector development】

○North Block

Facilities and accommodation functions that play central roles in the area (zone for the creation of new industries and cross-industrial exchanges in line with the preceding development zone)
Facilities : Hotels, innovation facilities, commercial facilities, condominiums

○South Block

An advanced urban functional cluster zone that promotes business and tourism from around the world. (Business, commercial, accommodation and MICE facilities)
Facilities : Hotels, Office, commercial facilities, urban spa, MICE facility, condominiums

○Park facilities

Developing facilities within the park to create a lively atmosphere, innovation, and places to eat.

【Upgrading Infrastructure】

○Railroad improvement project

Redirect railroad tracks and establish a new station underground
The new station opened in March 2023 as Osaka Station with an underground platform (Umekita area).

○Land Readjustment Project

Construct roads and a plaza to support appropriate land usage in front of Osaka Station.

○Disaster prevention park development together with surroundings implement project

An approximately 4.5-hectare urban park will be built in the heart of the zone.

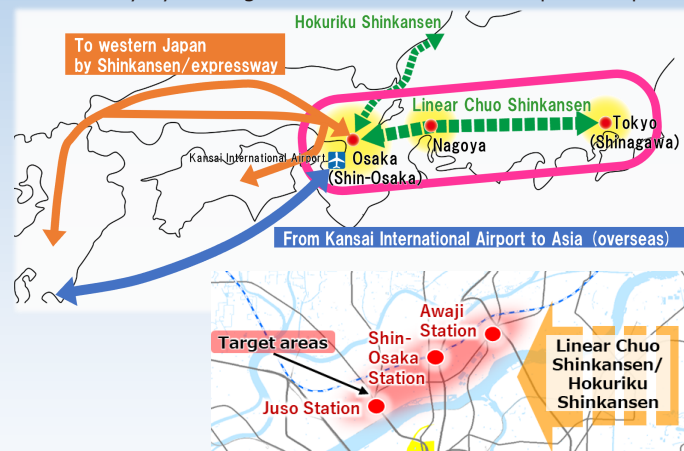
Schedule

September 2024
FY2027

Pre-opening (partly)
Grand opening

Shin-Osaka Station District

The area around Shin-Osaka Station (Shin-Osaka, Juso, and Awaji), which connects the transportation networks of major cities on the nation's east-west axis and the heartland on Osaka's north-south axis, will be further developed by high-speed transportation networks such as the Linear Chuo Shinkansen, the Hokuriku Shinkansen, and the Yodogawa-Sagan Route. With the designation of the Shin-Osaka Station area as an Urban Regeneration Emergency Development Area (October 2022), we have begun working on projects for around 2040 under the policy of "Creating an urban hub with one of the world's leading wide-area transportation terminals" that integrates the station and the city by making the most of the area's unique transportation network that connects to the rest of the country and the world.



【Private sector urban development project】
○Private sector urban development for large-scale sites, etc.
•Introduction of high-quality urban functions
•Creation of attractive lower levels of buildings
•Improvement of city landscape
•Improvement of transportation, environment, disaster prevention, etc.

【New Shinkansen Station-Related Projects】
○Wide-area transport hub facility
○Pedestrian flow connecting the station and the city
○Large-scale exchange facilities
○Development of new station building on Shin-Osaka connecting line
※Concrete consideration to be made based on the location of the new Shinkansen station.

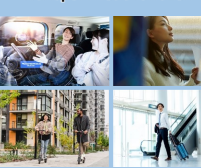


Urban functions to be introduced

Exchange facilitation function



Transport node function



Urban space function



Shin-Osaka Station Area Urban Function Improvement Zone (Urban Regeneration Emergency Development Area (114 ha))