

Tour Map

What are Osaka City's urban landscape resources?

In Osaka City, important resources that characterize the local scenery play a vital role in shaping the landscape, and to make as many people as possible aware of them and actively use them in community beautification, they are registered as urban landscape resources.

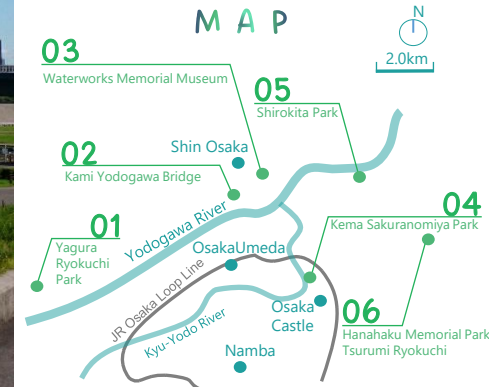


We invite you to visit a place where you can picnic while getting in touch with nature, where you can enjoy sports and recreation, and where you can enjoy the view of airplanes flying, bridges, and buildings on the opposite shore.



Tour around the Yodogawa riverbed

Urban Planning Division, Planning Department, Planning and Coordination Bureau, City of Osaka (Urban Scenery)
Telephone: 06-6208-7887



Urban landscape resources around the Yodogawa riverbed

- | | | | |
|--|--|--------------------------------------|---|
| <p>01
Nishi yodogawa Ward</p> | <p>Natural rocky seawalls made of natural stone
Yagura Ryokuchi Park</p> | <p>04
Miyakojima Ward</p> | <p>Water, greenery, and cherry blossoms
Kema Sakuranomiya Park</p> |
| <p>02
Yodogawa Ward</p> | <p>View of a large bridge
Kami-yodogawa Bridge (JR-West)</p> | <p>05
Asahi Ward</p> | <p>Seasonal flowers
Shirokita Park</p> |
| <p>03
Higashi yodogawa Ward</p> | <p>Encounter with waterworks
Waterworks Memorial Museum
(Former Kunijima Water Treatment Plant First Water Distribution Pump Station)</p> | <p>06
Tsurumi Ward</p> | <p>A park that makes you smile with flowers and greenery
Hanahaku Memorial Park Ryokuchi</p> |

Tour around the river bed
 Urban landscape resources around
 the Yodogawa river bed

01
 Nishi
 yodogawa
 Ward

Natural rocky seawalls made of natural stone
 Yagura Ryokuchi Park



This is a park facing the sea, featuring natural rocky seawalls and tide pools where visitors can come into contact with the water, small fish, and crabs. The evening view of the silhouette of the bay's coastline is symbolic.

2-1 Nishijima, Nishiyodogawa Ward, Osaka City

Approximately 40-minute walk from Fuku Station on the Hanshin Namba Line (Walk along the Onogawa Ryokuin Road to reach the site)



04
 Miyakojima
 Ward

Water, greenery, and cherry blossoms
 Kema Sakuranomiya Park



This is a riverside park along Okawa River. The right bank features the Mint Bureau, Sempukan, and other buildings representative of the early Meiji period, while the left bank has the Sakuranomiya Beach, the only man-made beach in the city. The promenade along the flowing Okawa River is lined with cherry blossom trees.

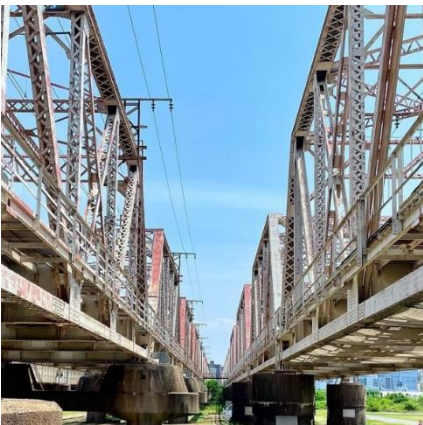
Amijima-cho, Miyakojima Ward, Osaka City

Short walk from Sakuranomiya Station on JR Osaka Loop Line



02
 Yodogawa
 Ward

View of a large bridge
 Kami-yodogawa Bridge(JR)



The three lines of the Tokaido Main Line (city-bound line, city-departing line, and freight branch line) were completed in sequence. The three bridges, which are between 80 and 120 years old, are close to riverbed level and have a powerful visual impact, and the trains running overhead are a moving sight.

1 Nishinakajima, Yodogawa Ward, Osaka City

10 minutes walk from Minamikata Station on Hankyu Kyoto Line



05
 Asahi
 Ward

Seasonal flowers
 Shirokita Park



This is 9.5 ha park with a large pond and iris garden, created using the riverbed of the Kyu-Yodo River. A walking path lined with cherry trees around the large pond, a plum grove, and a hill with playground equipment are available, and families and groups can be seen relaxing on their holidays at these sites.

3 Ikue, Asahi Ward, Osaka City

Take Osaka City Bus No. 34 (bound for Moriguchi shako-mae) from Osaka Station
 It is a short walk from Shirokitaoken-mae bus stop



03
 Higashi
 yodogawa
 Ward

Encounter with waterworks
 Waterworks
 Memorial Museum



This is a learning facility introducing the role of waterworks, preserving and utilizing the first water distribution pump station of the Kunijima Water Treatment Plant as a project to commemorate the 100th anniversary of Osaka City's waterworks.

1-3-1 Kunijima, Higashiyodogawa Ward, Osaka City

Go from Umeda Station to Nishinakajima-Minamigata Station on the Osaka Metro Midosuji Line.
 10 minute walk from Exit 2 (South) after getting off
 Take Osaka City Bus No. 93(bound for Ikatano Shako-mae) from Osaka Station 5 minutes walk from Nidhinakajima 1-chome bus stop *Need to check opening days



06
 Tsurumi
 Ward

A park that makes you smile with flowers and greenery
 Hanahaku Memorial Park Tsurumi Ryokuchi



This park was developed on the former site of the 1990 International Garden and Greenery Exposition. Flowers of each season bloom at the Windmill Hill, and the park offers facilities such as the Sakuya Konohana Pavilion, BBQ area, and sports facilities

2-163 Ryokuchi-Koen, Tsurumi Ward, Osaka City

Short walk from the Tsurumi-Ryokuchi Station on the Nagahori Tsurumi-ryokuchi Line

